

# Local Authority Election Statistics 2001

Prepared by Research Services  
for Local Government Services  
Department of Internal Affairs – Te Tari Taiwhenua  
2003



## Local Authority Election Statistics 2001

Published in 2003 by the Department of Internal Affairs  
Te Tari Taiwhenua, PO Box 805, Wellington  
Aotearoa, New Zealand.  
Crown copyright 2003  
ISSN 1171-1523

Printed by

Previous publications in this series:

Local Authority Elections 1959, 1962 and 1965

Local Authority Elections 1968

Local Authority Elections 1971

Local Authority Elections 1974

Local Authority Election Statistics 1977

Local Authority Election Statistics 1980

Local Authority Election Statistics 1983

Local Authority Election Statistics 1989

Local Authority Election Statistics 1992

Local Authority Election Statistics 1995

Local Authority Election Statistics 1998

2

### Where To Obtain Copies

Copies of the report can be obtained from the Department of Internal Affairs, State Insurance Building, 46 Waring Taylor Street, Wellington. Telephone (04) 495-7200. P O Box 805, Wellington, New Zealand. A publications catalogue is available at <http://www.dia.govt.nz>



## Foreword

I am pleased to present this report of the 2001 Local Authority Election Statistics.

This is the twelfth edition in a series that began in 1959. This series provides an important and interesting picture of the development of local government elections over more than 40 years.

The 2001 elections were the fifth since local authorities were restructured in 1989, and the first since the establishment of district health boards. It is now possible to see national trends as well as more localised patterns in the results for each individual authority.

I believe this report will be of interest to all involved in local government in New Zealand and those with an interest in democracy in general.

I would like to thank the electoral officers and councils for providing the data from which this report is generated. Without their help we could not have produced this report.

A handwritten signature in black ink that reads "C Blake". The signature is written in a cursive style with a long horizontal stroke at the end. To the right of the signature is a vertical line.

Christopher Blake  
Secretary for Local Government

## Contents

Section 1: Quick Reference	7
Section 2: Introduction	8
Section 3: Overview	13
Section 4: Interest in standing for local election	15
Section 5: Successful Candidates	17
Section 6: Particular Issues	22
Section 7: Levels of voter participation	24
7.1: Factors that might affect turnout	28
Section 8: Population of Local Authorities	38
Section 9: Regional Council Elections	39
Section 10: District Health Board Elections	46
Section 11: City Council elections	60
Section 12: District Council elections	68
Section 13: Community Board elections	82
Section 14: Local Authority parties	100
14.1: Details of Parties in Cities	101
14.2: Full list of Parties named in the 2001 elections	104

## Figures

Figure 2.1: Example of Informal Votes	11
Figure 5.1: Proportions elected who were women 1959-2001	21
Figure 7.1 and Figure 7.2: Voter turnout in District Councils, 1989-2001	26

Figure 7.3 and 7.4: Voter turnout in District Councils, 1989-2001	27
Figure 7.5 and 7.6: Voter turnout for City Councils, and Regional Councils 1989-2001	27
Figure 7.7: Turnout by number of Candidates, 2001	30
Figure 7.8: Turnout by proportion of electors per position, 2001	32
Figure 7.9: Turnout levels by rural/urban territorial authorities, 2001	33
Figure 14.1: Proportion of candidates with party affiliation or independent status	103
Figure 14.1: Proportion of members with party affiliation or independent status	103

## Tables

Table 3.1: Number of contested bodies, 1989 - 2001	13
Table 3.2: Number of elected positions, 1989 - 2001	13
Table 3.3: Representation, 1989 - 2001	14
Table 4.1: Candidates and contests, 1989 - 2001	15
Table 4.2: Candidates 1989 - 2001	15
Table 4.3: Number of candidates per available position, 1989 - 2001	16
Table 4.4: Members elected unopposed 1989 - 2001	16
Table 4.5: Proportion of members elected unopposed, 1989 - 2001	16
Table 5.1: Proportion of candidates and proportion of councillors who were previously sitting members, 1989 - 2001	17

Table 5.2: Women and men as candidates and elected members, 1989 - 2001	17	Table 7.11: Proportion of electors per position and turnout levels, 1998 - 2001	31
Table 5.3: Women candidates and members, 1989 - 2001	18	Table 7.12: Average turnout by urban/rural status of territorial authorities, 1998 - 2001	32
Table 5.4: Proportion of members who were women, 1989 - 2001	19	Table 7.13: Proportion of rural/urban territorial authorities by turnout levels, 1998 - 2001	33
Table 5.5: Women mayors, 1989 - 2001	19	Table 7.14: Average candidates per position, 2001	34
Table 5.6: Number and proportion of women candidates and women elected in local government, 1959 - 1986	20	Table 7.15: Average community board turnout, 1998 - 2001	34
Table 5.7: Number and proportion of women candidates and women elected in local government, 1989 - 2001	20	Table 7.16: Average electors per community board, 1998 - 2001	34
Table 6.1: Number of ratepayer electors, 1992 - 2001	22	Table 7.17: Average community board turnout by electors per community board, 1998 - 2001	35
Table 6.2: Informal votes: number of votes, 1989 - 2001	22	Table 9.1: Regional council candidate numbers, 1989 - 2001	39
Table 6.3: Informal votes: proportion of total vote, 1989 - 2001	23	Table 9.2: Contested regional council wards, 1989 - 2001	39
Table 6.4: Special votes, 1989 - 2001	23	Table 9.3: Sitting regional councillors re-elected, 1989 - 2001	39
Table 7.1: Overall average voter turnout, 1989 - 2001	24	Table 9.4: Representation of women in regional council elections, 1989 - 2001	40
Table 7.2: Average turnout of ratepayer electors, 1992 - 2001	24	Table 9.5: Electors on the roll for regional councils, 1989 - 2001	40
Table 7.3: Average turnout regional councils and district health boards, 1989 - 2001	25	Table 9.6: Average electors per councillor on regional councils, 1989 - 2001	40
Table 7.4: Average turnout for city and district councils and for communities, 1989 - 2001	25	Table 9.7: Voter turnout for regional council elections, 1989 - 2001	41
Table 7.5: Size of local authorities, 1998 - 2001	28	Table 9.8: Electors who voted in regional council elections, 1989 - 2001	41
Table 7.6: Size of community boards, 1998 - 2001	28	Table 9.9: Special votes in regional council elections, 1989 - 2001	42
Table 7.7: Average candidate and turnout levels, 1998 - 2001	29	Table 9.10: Informal votes in regional council elections, 1989 - 2001	42
Table 7.8: Proportion of candidate and turnout levels, 1998 - 2001	29	Table 9.11: Regional council elections - 2001	43
Table 7.9: Number of electors per position, 1998 - 2001	30		
Table 7.10: Average number of electors per authority, 1998 - 2001	30		

Table 10.1: Positions on district health boards, 2001	46	Table 12.5: Number of electors on the roll in district councils, 1989 - 2001	70
Table 10.2: Contested district health board constituencies, 2001	46	Table 12.6: Average electors per councillor on district councils, 1989 - 2001	70
Table 10.3: Representation of women in DHB elections, 2001	46	Table 12.7: District council voter turnout, 1989 - 2001	71
Table 10.4: Average electors per member for DHB elections, 2001	47	Table 12.8: Electors who voted in district council elections, 1989 - 2001	71
Table 10.5: Electors who voted in district health board elections, 2001	47	Table 12.9: Special votes in district council elections, 1989 - 2001	72
Table 10.6: Special votes cast in DHB elections, 2001	47	Table 12.10: Informal votes in district council elections, 1989 - 2001	72
Table 10.7: Informal votes in DHB elections, 2001	47	Table 12.11: District council elections, 2001	73
Table 10.8: District Health Board Elections, 2001	48	Table 13.1: Community board candidate numbers, 1989 - 2001	82
Table 11.1: City council candidate numbers, 1989 - 2001	60	Table 13.2: Contested community board elections, 1989 - 2001	82
Table 11.2: Contested city council wards, 1989 - 2001	60	Table 13.3: Sitting community board members re-elected, 1989 - 2001	82
Table 11.3: Sitting members of city councils re-elected, 1989 - 2001	61	Table 13.4: Representation of women in community board elections, 1989 - 2001	83
Table 11.4: Representation of women in city council elections, 1989 - 2001	61	Table 13.5: Electors on the roll for community board elections, 1989 - 2001	83
Table 11.5: Number of electors on the roll in city councils, 1989 - 2001	62	Table 13.6: Average elector per member on community boards, 1989 - 2001	84
Table 11.6: Average electors per councillor on city councils, 1989 - 2001	62	Table 13.7: Voter turnout in community board elections, 1989 - 2001	84
Table 11.7: Average city council voter turnout, 1989 - 2001	62	Table 13.8: Electors who voted in community board elections, 1989 - 2001	84
Table 11.8: Electors who voted in city council elections, 1989 - 2001	63	Table 13.9: Special votes in community board elections, 1989 - 2001	85
Table 11.9: Special votes in city council elections, 1989 - 2001	63	Table 13.10: Informal votes in community board elections, 1989 - 2001	85
Table 11.10: Informal votes in city council elections, 1989 - 2001	64	Table 13.11: Community board elections, 2001	86
Table 11.11: City council elections, 2001	65		
Table 12.1: District council candidate numbers, 1989 - 2001	68		
Table 12.2: Contested district council wards, 1989 - 2001	68		
Table 12.3: District council members re-elected, 1989 - 2001	69		
Table 12.4: Representation of women in district council elections, 1989 - 2001	69		

## Section 1: Quick Reference

### Number of Elected Councils

District Health Boards	21
Regional Councils	12
Territorial Authorities	
City Councils	15
District Councils	58*
Community Boards	146
Total number of authorities	253

### Representation of Women

Number of women elected	615
Proportion of all those elected who are women	30.7%
Number of women mayors	12 (of 74)
Proportion of city councillors who are women	39%
Proportion of district councillors who are women	25%
Proportion of community board members who are women	31%
Proportion of district health board members who are women	44%
Proportion of regional councillors who are women	26%

\* Rodney district not included

### Elected of Members (including mayors)

Number of candidates (including those unopposed)	4,683
Number of members elected	2,006
Proportion of members elected unopposed	18
Proportion of members (including mayors) re-elected to previous positions	62%

### Turnout

Resident electors on territorial authority electoral rolls	2,537,760
Ratepayer electors on territorial authority electoral roll	10,858
Proportion of all electors who are ratepayer electors	0.43%
Turnout in election of district health boards	50%
Turnout in election of regional councils	49%
Turnout in election of city councils	45%
Turnout in election of district councils	57%
Turnout in election of community boards	46%

## Section 2: Introduction

This report covers the 2001 election statistics for territorial authorities (district and city councils), regional councils, district health boards (DHBs) and community boards. For the purposes of this report all of these elections will be referred to as local authorities elections.

### Eligible to vote

The decision to vote is a personal choice, however it is a legal requirement for New Zealand citizens and permanent residents over the age of 18 years to be enrolled so they can choose whether or not to vote. People are qualified to enrol if:

- they are 18 years old or older, and
- they are a New Zealand citizen or permanent resident, and
- they have lived in New Zealand for one year or more without leaving the country.

They cannot enrol if:

- they are a New Zealand citizen who has not been in New Zealand at all within the last three years, or
- they are a permanent resident of New Zealand who has not been in New Zealand at all within the last 12 months, or
- they are in prison, having been sent there for three years or more because of a criminal offence, or
- they are a patient in a psychiatric hospital who has been sent there for the last three years or more, or
- they are on the Electoral Corrupt Practices List.

New Zealand public servants and members of the New Zealand defence forces who are on duty overseas for long periods are qualified to enrol, as are

members of their family.

The area in which a person is entitled to enrol will be the last one in which they lived for at least one month. If they have never lived in any one electorate for one month or longer, their electorate will be the one which they now live or in which they last lived.

(Source: <http://www.elections.org.nz/elections/enrolling/index.html>)

### Types of Local Authorities

*Regional councils* are responsible for a range of functions including resource management, environmental planning and regional land transport. There are 12 regional councils covering most of the country. Members are elected to regional councils from constituencies and they appoint their own chairperson.

*Territorial authorities* (or *Territorial local authorities*) are responsible for a broad range of functions such as roads, water supply, sewage disposal and rubbish collection. They also assume responsibility for amenities such as parks, libraries and swimming pools, and undertake regulatory functions in respect of public health and safety. Territorial authorities with a population of 50,000 or more and which are predominantly urban and a major urban centre of regional activity may designated as city councils. Some cities of less than 50,000 in population were given that status in 1989. Other territorial authorities are designated as *district councils*.

There are 15 city councils and 59 district councils. Each territorial authority has a directly elected mayor. Most territorial authorities are divided into wards for the election of councillors. Several territorial authorities have been

allocated regional council functions and are called *unitary authorities* (Nelson, Gisborne, Tasman and Marlborough). They are counted as territorial authorities for this report.

Some territorial authorities have *community boards* to which they can delegate functions. Community boards are not technically local authorities, but are directly elected and are included as local authorities for the purposes of this report. There are 146 community boards.

*District Health Boards* (DHBs) are responsible for providing or buying Government funded health care services for the population of a specific geographical area. There are 21 DHBs in New Zealand and they have existed since 1 January 2001. The statutory objectives of DHBs are to improve, promote and protect the health of communities; to promote the integration of health services, especially primary and secondary care services; and to promote effective care or support of those in need of personal health services or disability support.

Up to 11 board members sit on each board, of which a maximum of 7 are elected and 4 appointed by the Minister of Health. Territorial Authority electoral officers (TAs) are responsible for running the elections (the DHBs pay the territorial authorities for the cost of running the elections<sup>1</sup>).

### Method of election

All elections were conducted by post and electors had three weeks within which to return their votes. The conduct of elections is governed by the Local

---

<sup>1</sup> Source: <http://www.moh.govt.nz/moh.nsf>

Electoral Act 2001, with some issues being provided for in the Local Government Act 1974. DHB elections are regulated by the New Zealand Public Health and Disability Act 2000 (NZPHD Act). If successful, candidates in all elections serve a three-year term and then new elections are held<sup>2</sup>.

### Research method

Election statistics were obtained electronically, in the majority of cases via a purpose-built website. Electoral Officers were sent a link to the site and a username and password to enable them to log-on to the site so they could enter the election results they were responsible for. A small number of authorities were unable to provide separate totals for votes cast under the ratepayer franchise.

The data in this publication has been carefully checked to ensure accuracy, but due to the volume and large number of sources involved in the data collection, there may be some errors that are beyond our control.

---

<sup>2</sup> The only exception is members of DHBs that are appointed by the Minister of Health. They can serve for a maximum of three terms (nine years)

## Definitions

### Members elected unopposed

Where the number of candidates in a ward, district or constituency is the same or less than the number of vacancies then every candidate is declared to be elected prior to the election.

### Contests: Constituencies and Wards

For electoral purposes, regions are divided into constituencies, which generally correspond to cities and districts within the region. In a few cases, a territorial district is divided between two or more regions. Most territorial authorities are divided into wards for election purposes, with a separate election within each ward to elect one or more representatives to represent that area. However, some territorial authorities do not have wards and these elections are referred to as being *at large*. In 2001, four cities and three districts held council elections *at large* rather than in wards.

### Electors

*Resident elector* is someone who is eligible to vote in the parliamentary elections. This means that anybody who is registered as a parliamentary elector, and whose address is in the particular area where an election is held qualifies as an elector in that district health board / community board (if any)/ licensing trust (if any)/ or regional/ city or district council area. Rolls of residential electors are compiled from parliamentary rolls.

#### *Ratepayer elector*

Since 1992, there has been a ratepayer franchise. This means that ratepayers owning property in a region, city, district or community where they are not a resident are entitled to enrol for the ratepayer franchise. A person

may enrol as the sole ratepayer in respect of a property, or may be nominated by joint ratepayers or a company or organisation. All ratepayer electors must also be registered parliamentary electors. Eligible ratepayer electors are able to vote in all elections except for district health boards and licensing trusts.

#### *Total number of electors on the roll*

This is the total on the roll for the whole district and includes contested and uncontested constituencies/wards, ratepayer (if applicable) and resident electors.

## Representation

This is the total number of electors on the roll divided by the number of elected members.

### Voters

*Resident voter* is someone who is an eligible resident elector that voted in the local authority elections. The number of resident voters divided by the number of resident electors gives the resident turnout.

*Ratepayer voter* is someone who is an eligible ratepayer elector that voted in the local authority elections. The number of ratepayer voters divided by the number of ratepayer electors gives the ratepayer turnout.

*Total voters* is the sum of resident and ratepayer voters (including informal and valid special votes). This figure is divided by the sum of resident and ratepayer electors (in contested wards only) to give total turnout.

A *voter* differs from the number of *votes*. *Voters* is a count of people who voted in an election. *Votes* refers to the number of votes cast in an election. These two figures differ when there are two or more positions to be filled. If there are multiple positions to be filled in a ward or constituency election a *voter* is able to cast as many votes as there are positions to be filled.

### Special Votes

Anyone whose name appears on the roll and who claims to have not received voting papers, or to have lost, spoilt, or destroyed them, can cast a special vote – as can anyone whose name does not appear on the roll but who has enrolled on the parliamentary roll.

### Informal Votes

This is the number of voting papers for a particular election on which the candidate or candidates for whom the electors wish to vote is not clearly indicated.

On a strict interpretation, this includes voting papers that have not been marked at all. Widespread use was made of combined voting papers, and any sections left blank have been counted as informal votes by returning officers.

Figure 2.1 gives an example of a combined voting form with two types of informal votes. The first, in the council election, shows that the voter only voted for two of three possible council positions. It is unclear whether the voter did not want to vote cast a third vote or did not realise how many votes they had to cast for council elections. The second type of informal vote in Figure 2.1 is where the voter did not cast a vote in the community board election at all, they may not have seen community board election on the election form or they may decided not to vote in that election.

**Figure 2.1: Example of informal votes**

Council election	Community Board election
You can vote for a maximum of 3 candidates	You can vote for a maximum of 3 candidates
<input checked="" type="checkbox"/> Candidate A	<input type="checkbox"/> Candidate A
<input checked="" type="checkbox"/> Candidate B	<input type="checkbox"/> Candidate B
<input checked="" type="checkbox"/> Candidate C	<input type="checkbox"/> Candidate C
<input checked="" type="checkbox"/> Candidate D	<input type="checkbox"/> Candidate D

### Turnout

This is the percentage of electors on the roll (for those areas where an election was necessary) who voted. *Overall turnout* is the total number of resident and ratepayer voters (including those who cast informal and special votes) divided by the total number of electors on both the resident and ratepayer rolls in contested areas.

# Part One: Summary of Findings and Trends

## Section 3 : Overview

There have been five local authority elections since the 1989 restructuring of local government. Patterns of change and stability can now be traced over more than a decade.

### Elected bodies, positions, and level of representation

Since the previous local authority election in 1998, two community boards have been disestablished or amalgamated (Table 3.1). The 2001 election witnessed the first district health board elections since they were established on 1 January 2001. Apart from these changes, the local authorities remain the same as in 1998. There was no election held for Rodney District.

**Table 3.1: Number of contested bodies, 1989 - 2001**

Type of elected body	1989*	1992	1995	1998	2001
Regional councils	13	12	12	12	12
District Health Boards	-	-	-	-	21
Territorial authorities:					
-City councils	14	15	15	15	15
-District councils	60	59	59	59	58 <sup>^</sup>
Community boards	159	156	155	148	146
<b>Total elected bodies</b>	<b>246</b>	<b>242</b>	<b>241</b>	<b>234</b>	<b>252</b>

\*District Council election in 1989 includes Chatham Islands, which was a county council.

<sup>^</sup>Excludes Rodney District, where no election was held.

There have been some changes to the number of elected positions on local authorities (Table 3.2). The most notable change has been the introduction of 147 electable positions with the introduction of district health boards. District councils, city councils, and community boards all had reduced numbers of electable positions, while the number of positions on regional councils increased by one.

**Table 3.2: Number of elected positions, 1989 - 2001**

Type of elected body	1989	1992	1995	1998	2001
Regional councils	198	130	131	133	134
District Health Boards	-	-	-	-	147
Territorial authorities:					
-City councils	246	247	239	223	221
-City mayors	14	15	15	15	15
-District councils	769	705	684	668	640
-District mayors	59	59	59	59	58
Community boards	948	866	864	796	791
<b>Total positions</b>	<b>2,234</b>	<b>2,022</b>	<b>1,992</b>	<b>1,894</b>	<b>2,006</b>

### Enrolment of eligible electors

Table 3.3 shows that the number of people recorded on the electoral roll for local authorities across New Zealand in October 2001 was around 2.5 million electors. The population aged 18 years<sup>3</sup> and over who were usually resident on March 2001 according to the Census was 2,728,890. This means there were approximately 7% of those eligible who were not enrolled for the 2001 local authority elections.

**Table 3.3: Representation, 1989 - 2001**

	1989	1992	1995	1998	2001
Resident electors on territorial authority rolls	2,185,776	2,261,760	2,403,012	2,508,210	2,537,760
<b>Electors per member:</b>					
-Regional councils <sup>4</sup>	10,852	16,786	17,536	18,097	18,543
-District health boards	-	-	-	-	17,433
-City councils	4,809	5,136	5,601	6,315	6,622
-District councils	1,304	1,481	1,577	1,664	1,696
-Community boards	1,168	1,257	1,371	1,542	1,610

<sup>3</sup> The minimum legal voting age

<sup>4</sup> The Nelson-Marlborough Regional Council was abolished prior to the 1992 elections

### Summary

The introduction of district health board elections in 2001 has disguised some of the trends in local authority elections. Excluding district health board elections for the sake of comparability, several trends are evident in local authority elections conducted since 1989, these are:

- a downward trend in the number of positions available in local authority elections
- an upward trend in the number of electors on the roll
- an upward trend of in the number of electors per position.

### Measuring the health of the democratic process

Local authority elections provide an indicator of the health of the local democratic process in New Zealand, as measured by:

- how vigorously elections are contested
- how fully voters participate.

This report aims to address these two issues, and in particular to answer the following questions:

- What was the interest in standing for local election?
- Were particular types of candidates more successful than others?
- What was the level of voter participation, and were there particular factors that seemed to influence participation?
- Are there particular issues or lessons for local authorities and those responsible for local government policy?

## Section 4: Interest in standing for local election

Overall there appeared to be greater interest in standing for election to a local authority compared to 1998, as measured by the number of candidates per position (Table 4.1). However, the proportion of contested positions was the lowest since 1989. As later tables show, the inclusion of district health board elections is largely responsible for the relatively high figures in Table 4.1.

**Table 4.1: Candidates and contests, 1989 - 2001**

Candidates	1989	1992	1995	1998	2001*
Candidates	5,297	3,915	3,884	4,131	4,683
Positions <sup>^</sup>	2,234	2,022	1,992	1,894	2,006
Candidates per position#	2.37	1.94	1.95	2.18	2.33
Elected unopposed	172	365	303	254	365
Members elected unopposed	8%	18%	15%	13%	18%
Positions contested	92%	82%	85%	87%	82%

<sup>^</sup> The number of positions in 2001 is higher than the number of people elected due to 10 positions being unfilled

\* 2001 results are inflated by the introduction of district health board elections

# Number of candidates per position, contested or unopposed

The increased interest in standing for election as shown above in Table 4.1 was strongly influenced by the introduction of district health board elections. The number of candidates seeking election was down for all elections (Table 4.2). The figure presented in Table 4.1 is lower than 1998 when district health board numbers are excluded.

**Table 4.2: Candidates, 1989 - 2001**

Type of authority	1989	1992	1995	1998	2001
Regional councils	680	299	278	320	300
District Health Boards	-	-	-	-	1,085
City councils	778	677	636	712	593
City mayors	71	72	98	116	86
District councils	1,742	1,354	1,313	1,445	1,265
District mayors	194	161	193	232	217
Community boards	1,832	1,352	1,366	1,306	1,137
<b>Total candidates</b>	<b>5,297</b>	<b>3,915</b>	<b>3,884</b>	<b>4,131</b>	<b>4,683</b>

Table 4.3 shows the number of candidates that stood for election by the number of positions available. The number of candidates per position declined for all elections between 1998 and 2001. The inclusion of the district health board elections greatly increased the overall number of candidates per position. When DHB figures are excluded the results show that there was less interest in standing for election in 2001 compared to 1998, but similar proportions to other elections since 1989. The number of candidates per position in DHB elections (7.4 candidates per position) was easily the highest for any type of local authority election in 2001.

**Table 4.3: Number of candidates per available position, 1989 - 2001**

Type of authority	1989	1992	1995	1998	2001
Regional councils	3.4	2.3	2.1	2.4	2.2
District Health Boards	-	-	-	-	7.4
City councils	3.2	2.7	2.7	3.2	2.7
City mayors	5.1	4.8	6.5	7.7	5.7
District councils	2.3	1.9	1.9	2.2	2.0
District mayors	3.3	2.7	3.3	3.9	3.7
Community boards	1.9	1.6	1.6	1.6	1.4

The 2001 election overall had the highest proportion of uncontested positions since 1989 (Table 4.1). This was also largely true for each type of local authority election. Regional council, district council and city council mayoral elections all had the highest number of uncontested elections since 1989 (Table 4.4).

The inaugural district health board elections were predominantly contested, with just one constituency, consisting of just one position, being elected unopposed.

**Table 4.4: Members elected unopposed, 1989 - 2001**

Type of authority	1989	1992	1995	1998	2001
Regional councils	5	15	14	14	20
District Health Boards	-	-	-	-	1
City councils	0	5	1	0	5
City mayors	1	1	0	0	2
District councils	63	105	98	77	110
District mayors	8	17	11	2	6
Community boards	95	222	179	163	221
<b>Total unopposed</b>	<b>172</b>	<b>365</b>	<b>303</b>	<b>256</b>	<b>365</b>

Table 4.5 shows the proportion of members elected unopposed as a proportion of all electable positions. Less than 1% of positions on district health boards were not contested.

**Table 4.5: Proportion of members elected unopposed, 1989 - 2001**

Type of authority	1989	1992	1995	1998	2001
Regional councils	3%	12%	11%	11%	15%
District Health Boards	-	-	-	-	0.7%
City councils	0%	2%	0.4%	0%	2%
City mayors	7%	7%	0%	0%	13%
District councils	8%	15%	14%	12%	17%
District mayors	14%	29%	19%	3%	10%
Community boards	10%	26%	21%	20%	28%

## Section 5 : Successful Candidates

This section compares the results of incumbent or sitting members against all other candidates. This is to determine whether or not sitting members were more likely to be re-elected compared to "new" candidates. This section also covers the representation of women in local authority elections.

A higher proportion of sitting members continued to be re-elected compared to other candidates across all types of local authorities (Table 5.1).

**Table 5.1: Proportion of candidates and proportion of councillors who were previously sitting members <sup>5</sup>, 1989 - 2001**

Type of body	1992	1995	1998	2001
Regional council				
Candidates	N/A	38%	32%	36%
Councillors	57%	69%	61%	80%
City council				
Candidates	N/A	32%	27%	30%
Councillors	58%	68%	63%	69%
Mayors	73%	67%	47%	75%
District council				
Candidates	N/A	41%	37%	38%
Councillors	61%	64%	62%	63%
Mayors	73%	66%	68%	55%
Community boards				
Candidates	N/A	43%	39%	47%
Members	N/A	59%	54%	59%

*N/A Not available*

<sup>5</sup> Returned to the same position they held before

Regional, city and district councils and mayoralities all returned a majority of sitting members (Table 5.1). This was particularly true of regional councils where 80% of the councillors had served in the previous term. Three-quarters of city council mayors were sitting members also.

Fewer women stood for election, compared to men (Table 5.2). However, there was a higher proportion of women candidates (32%) in 2001 than in previous elections.

**Table 5.2: Women and men as candidates and elected members, 1989 - 2001**

	1989	1992	1995	1998	2001
Candidates					
Women	1,137	1,043	1,093	1,170	1,517
Men	4,160	2,872	2,791	2,963	3,166
Proportion of candidates					
Women	21%	27%	28%	28%	32%
Men	79%	73%	72%	72%	68%
Members elected					
Women	561	574	592	596	615
Men	1,673	1,448	1,400	1,298	1,382
Proportion of members					
Women	25%	28%	30%	31%	31%
Men	75%	72%	70%	69%	69%
Proportion elected					
Women	49%	55%	54%	51%	40%
Men	40%	50%	50%	44%	43%

Women were represented on 31% of the electable positions in 2001, the same level as in 1998 (Table 5.3). Their level of success was similar to their share of candidates, comprising 31% of elected members.

Table 5.2 also shows that not only did more men stand, and get elected but proportionately, men were slightly more likely to get elected. 43% of male candidates were elected, compared to 40% of all female candidates.

Table 5.3 shows the number of women candidates and elected members for each type of election. There were fewer women candidates in all types of election in 2001 compared to 1998, except for regional council elections. The number of women elected was also lower in 2001 than in 1998 for all elections with the exception of city council and city mayoral elections. This is reflected in Table 5.4, where the proportion of women elected was lower than in 1998 for all elections except city council elections.

Female representation was highest on district health boards (44%), followed by city councils (38%) and community boards (32%).

**Table 5.3: Women candidates and members, 1989 - 2001**

Type of body	1989	1992	1995	1998	2001
<b>Regional Council</b>					
Council candidates	98	58	63	60	70
Councillors	44	33	38	37	35
<b>District Health Boards</b>					
DHB candidates	-	-	-	-	479
DHB members	-	-	-	-	65
<b>City council</b>					
Council candidates	219	206	219	229	195
Councillors	87	87	80	81	86
Mayoral candidates	16	19	24	34	19
Mayors	4	4	3	4	4
<b>District council</b>					
Council candidates	295	292	318	367	330
Councillors	149	164	178	178	168
Mayoral candidates	22	31	31	38	49
Mayors	6	9	12	15	8
<b>Community board</b>					
Board candidates	487	437	438	442	375
Board members	271	277	281	281	248
<b>Total women candidates</b>	<b>1,137</b>	<b>1,043</b>	<b>1,093</b>	<b>1,170</b>	<b>1,517</b>
<b>Total women members</b>	<b>561</b>	<b>574</b>	<b>592</b>	<b>596</b>	<b>615</b>

**Table 5.4: Proportion of members who were women, 1989 - 2001**

Type of body	1989	1992	1995	1998	2001
Regional councils	22%	25%	29%	28%	26%
District Health Boards	-	-	-	-	44%
City councils	35%	35%	33%	36%	39%
District councils	19%	23%	26%	27%	25%
Community boards	29%	32%	33%	35%	31%

The number of women mayors remained the same between 1998 and 2001 in city council elections, while there were six fewer female mayors elected to district councils 2001 than in 1998. (Table 5.5).

**Table 5.5: Women mayors, 1989 - 2001**

Type of body	1989	1992	1995	1998	2001
City councils	4/14	4/15	3/15	4/15	4/15
District councils	6/59	9/59	12/59	15/59	8/58

Table 5.6 and Table 5.7 show the trends in women's representation since 1959. The proportion of candidates who were women has risen steadily since 1959, increasing from around 5% of all candidates in 1962 up to 32% in 2001.

Figure 5.1 compares the proportion of women in local authorities from 1959 to 2001, and illustrates how the proportion of candidates and members who were women has increased in successive elections over the period up till 1998. Between 1998 and 2001 there has been a decrease in the proportion of women elected, but a continued increase in the proportion of women candidates.

**Table 5.6: Number and proportion of women candidates and women elected in local government, 1959 - 1986**

YEAR Date of local election	CANDIDATES			MEMBERS		
	Total candidates	Total women candidates	Percent women	Total members	Total women members	Percent women
1959				2,408	63	2.6%
1962	3,158	150	4.8%	2,377	89	3.7%
1965	3,386	144	4.3%	2,344	83	3.5%
1968	3,613	150	4.2%	2,517	95	3.8%
1971	3,730	245	6.6%	2,492	142	5.7%
1974	3,951	371	9.4%	2,453	190	7.8%
1977	3,347	408	12.2%	2,292	255	11.1%
1980	3,520	507	14.4%	2,352	332	14.1%
1983	3,439	547	15.9%	2,352	386	16.4%
1986	3,742	688	18.4%	2,298	422	18.4%

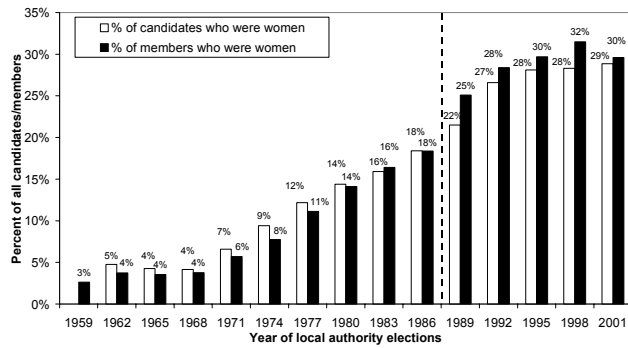
**Table 5.7: Number and proportion of women candidates and women elected in local government, 1989 - 2001\***

YEAR Date of local election	CANDIDATES			MEMBERS		
	Total candidates	Total women candidates	Percent women	Total members	Total women members	Percent women
1989	5,297	1,137	21.5%	2,234	561	25.1%
1992	3,915	1,043	26.6%	2,022	574	28.4%
1995	3,884	1,093	28.1%	1,992	592	29.7%
1998	4,133	1,170	28.3%	1,894	596	31.5%
2001*	4,696	1,521	32.4%	2,010	615	30.8%

Note: 1989 was the first election of local authorities in New Zealand after Local Government restructuring.

\* 2001 was the first election of district health boards after they were established

**Figure 5.1: Proportions elected who were women 1959-2001**



*Note: Elections from 1959 to 1986 represent the situation before restructuring of local government, and apply to councillors and mayors of territorial authorities. Elections from 1989 to 2001 represent the situation after restructuring, and apply to the combined total of councillors and mayors of all regional councils, all city and district councils and all members of community boards*

*\* 2001 election excludes district health board results, refer to Table 5.7 for the inclusion of DHB results*

## Section 6: Particular Issues

### Ratepayer franchise

The ratepayer franchise was reintroduced as Government policy in 1992, and has been available in all elections since then. It had been available prior to 1986. Ratepayers can vote in the regional, city, district or community board elections for areas where they are not resident but where they own property.

Ratepayer electors made up on average less than 1% of the total number of electors on the rolls for all types of elected bodies (Table 6.1).

**Table 6.1: Number of ratepayer electors, 1992-2001**

Ratepayer electors	1992	1995	1998	2001
Regional council	16,224	11,489	11,027	9,263
City council	6,080	3,460	2,724	2,518
District council	16,180	10,536	8,699	8,340
Community boards	13,039	8,012	6,102	6,535
<b>Proportion of total electors</b>				
Regional council	0.74%	0.50%	0.46%	0.37%
City council	0.48%	0.26%	0.19%	0.17%
District council	1.59%	0.98%	0.78%	0.73%
Community boards	1.18%	0.67%	0.31%	0.51%

### Informal voting

In 2001 there were more informal votes than in previous elections (Table 6.2). However, the exclusion of district health board results for comparability with previous elections would show that the numbers of informals are well down on 1998 levels, and would be the lowest since 1992.

**Table 6.2: Informal votes: number of votes, 1989 - 2001**

Type of authority	1989	1992	1995	1998	2001
Regional councils	40,116	73,637	88,232	105,039	66,848
District Health Boards	-	-	-	-	71,170
City councils	22,673	23,699	20,142	31,024	17,699
City mayors	16,077	12,183	8,238	13,214	17,994
District councils	11,602	10,705	11,992	11,037	9,454
District mayors	14,172	12,110	11,244	13,929	9,708
Community boards	32,352	18,732	21,211	38,373	22,663
<b>Total informal votes</b>	<b>136,992</b>	<b>151,066</b>	<b>161,059</b>	<b>212,616</b>	<b>215,536</b>

As a proportion of total votes cast, the proportion of informal votes was well down compared to previous elections despite the inclusion of district health board elections, which had relatively high levels of informal votes (Table 6.3).

The proportions of informal votes in city and district council elections and district council mayoral elections were the lowest since 1989.

**Table 6.3: Informal votes: proportion of total vote, 1989 - 2001**

Type of authority	1989	1992	1995	1998	2001
Regional councils	3.4%	7.0%	9.0%	9.0%	6.1%
District Health Boards	-	-	-	-	5.6%
City councils	3.7%	3.8%	3.0%	4.3%	2.6%
City mayors	1.2%	2.1%	2.7%	1.8%	2.9%
District councils	1.9%	1.9%	2.1%	1.8%	1.7%
District mayors	N/A	2.4%	2.2%	2.2%	1.7%
Community boards	6.0%	3.8%	3.9%	6.8%	5.0%
All bodies	4.6%	5.4%	5.8%	5.9%	4.1%

*N/A Not available*

### Special voting

Patterns of special voting were quite variable between different territorial or local authorities. As a proportion of all votes cast, the level of special votes was also the second highest since 1989 (Table 6.4). The proportion of special votes allowed was the second highest since 1989. Similar to previous elections, special votes made up less than 1% of all votes. Details are provided later in the report for each particular local authority.

**Table 6.4: Special votes, 1989-2001**

Special votes	1989	1992	1995	1998	2001
Special votes cast	26,115	22,385	21,060	21,363	33,559
Proportion of votes being special votes	0.90%	0.80%	0.76%	0.69%	0.83%
Proportion of special votes allowed	68%	77%	73%	72%	75%

## Section 7: Levels of voter participation

This section looks at voter participation in local authority elections held since 1989. Voter participation is the number of electors that cast a vote in contested local authority elections as a proportion of electors on the roll in contested areas. Voter participation is referred to in this section as “turnout”.

Overall turnout is the combined turnout of both resident and ratepayer electors who voted as a proportion of all resident and ratepayer electors on the roll in contested local authority wards/constituencies.

### General trends in turnout

The turnout in 2001 local authority elections was the lowest since 1989 for all but regional council elections, where it was the second lowest since 1989 (Table 7.1).

**Table 7.1: Overall average voter turnout, 1989 - 2001**

Type of elected body	1989	1992	1995	1998	2001
Regional councils	56%	52%	48%	53%	49%
District Health Boards	-	-	-	-	50%
Territorial authorities:					
-City councils	52%	48%	49%	51%	45%
-City mayors	50%	48%	49%	51%	45%
-District councils	67%	61%	59%	61%	57%
-District mayors	67%	61%	59%	59%	56%
Community boards	54%	49%	50%	50%	46%

Of all elections in 2001, turnout was highest for district council elections. This is a reflection of the higher turnout typical of the more rural make-up of district councils. City council mayoral elections by comparison had the lowest turnout of all elections in 2001.

In contrast to the low overall turnout, the average ratepayer turnout was the highest since 1992 for all local authorities (Table 7.2).

**Table 7.2: Average turnout of ratepayer electors, 1992 - 2001\***

Type of elected body	1992	1995	1998	2001
Regional councils	67%	67%	60%	76%
Territorial authorities:				
-City councils	63%	65%	71%	86%
-District councils	72%	73%	79%	81%
Community boards	68%	69%	65%	82%

Table 7.3 shows the average turnout for regional councils and district health boards by the relative size of the local authority (large and small) and by their geographical distribution (North and South Island).

Large regional councils bucked the overall trend of lower voter turnout between 1998 and 2001 by having an increased turnout during this period (Table 7.3). By comparison, the overall voter turnout had decreased on average between 1998 and 2001 for smaller regional councils and across North Island and South Island regional councils. However, the average turnout was still highest amongst small regional councils.

Voter turnout was highest on average amongst the smallest district health boards (Table 7.3).

**Table 7.3: Average turnout regional councils and district health boards, 1989 - 2001**

Type of body/position	1989	1992	1995	1998	2001
Regional councils					
Large	*	*	45%	46%	48%
Small	*	*	59%	60%	57%
North Island	*	*	46%	51%	47%
South Island	*	*	55%	60%	56%
District health boards					
Large	-	-	-	-	47%
Small	-	-	-	-	56%
North Island	-	-	-	-	48%
South Island	-	-	-	-	55%

\* Details not available

Voter turnout in 2001 continued to be highest amongst smaller councils and in South Island councils, compared to larger and North Island councils (Table 7.4). For city councils, the smaller and South Island councils had a majority turnout, while amongst large city councils and North Island city councils fewer than half of eligible electors voted in 2001.

**Table 7.4: Average turnout for city, and district councils and for communities, 1989 - 2001**

Type of body/position	1989	1992	1995	1998	2001
City councils					
Large	51%	48%	48%	50%	44%
Small	55%	49%	54%	56%	51%
North Island	*	*	47%	49%	43%
South Island	*	*	54%	58%	51%
City mayors					
Large	51%	48%	48%	50%	44%
Small	55%	47%	54%	56%	51%
North Island	*	*	47%	49%	43%
South Island	*	*	55%	58%	51%
District councils					
Large	66%	60%	58%	61%	56%
Small	71%	65%	66%	68%	65%
North Island	64%	60%	57%	59%	55%
South Island	74%	66%	66%	67%	65%
District mayors					
Large	64%	60%	57%	52%	55%
Small	65%	67%	64%	66%	65%
North Island	*	60%	56%	57%	54%
South Island	*	65%	65%	66%	64%
Community boards					
North Island	51%	47%	48%	48%	44%
South Island	63%	54%	54%	56%	52%

\* Details not available

Turnout was down from 1998 across all types of councils and elections, with the exception of mayoral elections in large district councils (Table 7.4).

### Variations in turnout over time

The following figures (Figure 7.1 to Figure 7.6) show how the average turnout in elections for council has fluctuated among the 59 District Councils, 12 Regional Councils, and 15 City Councils for the five elections held between 1989 and 2001. *Note, the scale in the charts runs from 30% to 90%.*

Patterns show that some individual authorities had consistently higher turnout and others consistently low. Each authority seems to have a 'baseline turnout' but with variations from year to year. One trend shown in the charts is for higher *baseline turnout* as the list moves further South.

In several cases there was quite a wide variation in turnout from election to election. Local concerns might explain some of the patterns, with high turnout associated with some pressing local issue.

An unusual feature of turnout in cities was the election held in Lower Hutt in 1992. This was the only occasion since 1989 when any authority used ballot box voting instead of postal voting, and the turnout was very low, only 26%.

Figure 7.1 and Figure 7.2: Voter turnout in District Councils, 1989 - 2001

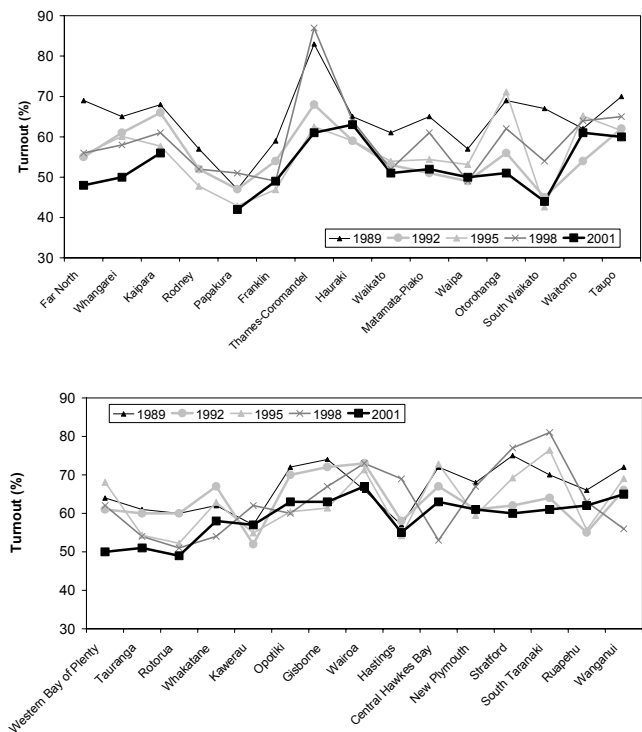


Figure 7.3 and Figure 7.4: Voter turnout in District Councils, 1989 - 2001

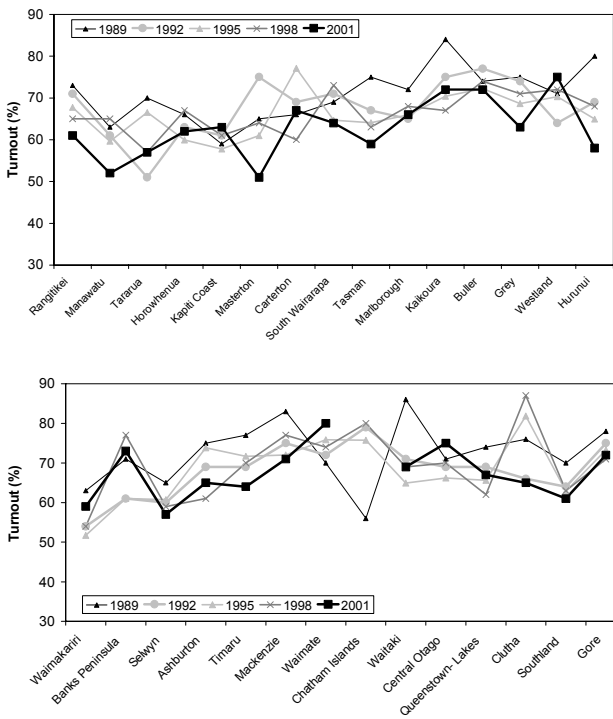
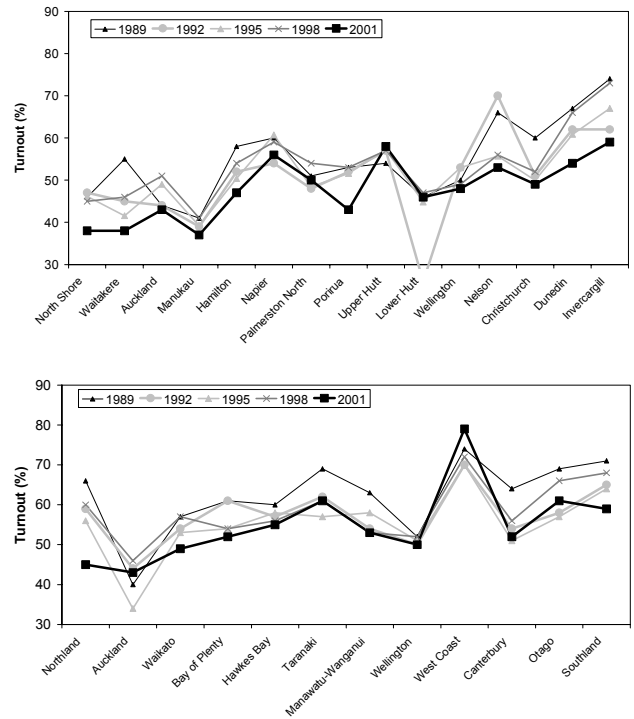


Figure 7.5 and Figure 7.6: Voter turnout for City Councils and Regional Councils, 1989 - 2001



## 7.1 Factors that might affect turnout

Territorial authorities (city and district councils) remain the element of local government with which the public interact most closely. Average voter turnout within contested wards in territorial authority elections have been examined to establish whether any particular factors were associated with high or low election turnout.

### Was turnout high or low?

Territorial authorities (TAs) that held elections were classified in four categories of turnout, as shown in Table 7.5. The majority of territorial authorities had medium-low, to medium high levels of turnout in 2001. Compared to 1998, there was a large increase in the number of councils that had low levels of voter turnout.

**Table 7.5: Size of local authorities, 1998 - 2001**

Turnout	Number of authorities	
	1998	2001
High (70% and over)	16	8
Medium-high (60-69%)	28	26
Medium-low (50-59%)	22	24
Low (less than 50%)	7	14
Total contested Territorial Authorities*	73	72

\* For the Chatham Islands in 1998 there was one less candidate than the number of positions; all candidates were declared elected and an election was held early in 1999 to fill the vacancy. In 2001 no election was held for Rodney District and the Chatham Islands Council was elected unopposed.

### Was there a mayoral contest?

All cities except Porirua and Invercargill had a mayoral contest. Seven districts also did not have mayoral elections (Kaipara, Rodney, Otorohanga, Stratford, Tararua, Grey and Southland). All of these councils had a medium-high voter turnout, with the exception of Porirua. It appears that lack of a mayoral contest did not greatly influence voter turnout in these authorities.

### Was there a local contest for community boards?

There was no clear association between the existence of a community board and high turnout (Table 7.6). However, local authorities with low turnout had the highest proportion of community boards.

**Table 7.6: Size of community boards, 1998 - 2001**

TA Turnout	Authorities with community boards			
	1998		2001	
High (70% and over)	10/16	63%	4/8	50%
Medium-high (60-69%)	18/28	64%	18/26	69%
Medium-low (50-59%)	10/22	45%	12/24	50%
Low (less than 50%)	7/7	100%	10/14	71%
Total	45/73	62%	44/72	61%

### Was there a large number of candidates?

The number of candidates was related to the levels of voter turnout (Table 7.7). There was most often a high turnout in areas where fewer candidates were standing, while low turnout occurred mainly in authorities where there were more candidates.

**Table 7.7: Average candidate and turnout levels, 1998 - 2001**

TA Turnout	Average candidates per position	
	1998	2001
High (70% and over)	2.13	1.67
Medium-high (60-69%)	2.22	2.03
Medium-low (50-59%)	2.44	2.14
Low (less than 50%)	3.08	2.60
Total	2.18	2.14

The following categories have been applied to levels of candidates per position amongst territorial authorities in Table 7.8:

- Low = 2.000 or less candidates per position
- Medium = 2.001 - 3.00 candidates per position
- High = 3.001 or more candidates per position.

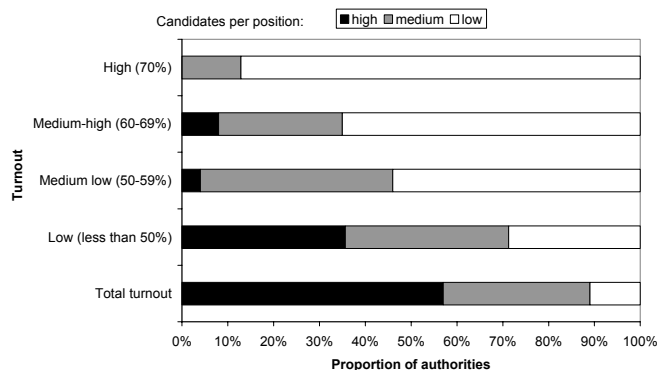
Table 7.8 confirms that there is a strong link between the number of candidates per position and the level of turnout amongst territorial authorities. This link can be seen more clearly in Figure 7.7, where authorities with low turnout have the highest proportion of authorities with more than three candidates per position, while authorities with high turnout have none.

**Table 7.8: Proportion of candidate and turnout levels, 1998 - 2001**

TA Turnout	Proportion of candidates per position	
	1998	2001
High (70% and over)	6% high	0% high
	38% medium	13% medium
	56% low	88% low
Medium-high (60-69%)	14% high	8% high
	39% medium	27% medium
	46% low	65% low
Medium-low (50-59%)	23% high	4% high
	45% medium	42% medium
	32% low	54% low
Low (less than 50%)	71% high	36% high
	14% medium	36% medium
	14% low	29% low
Total	N/A	57% high
	N/A	32% medium
	N/A	11% low

N/A – Not available

**Figure 7.7: Turnout by number of candidates, 2001**



**Number of electors**

Similar to authorities with fewer *candidates per position*, authorities with fewer *electors per council member* were strongly associated with higher turnouts. As might be expected, authorities with a small number of electors per council member also tended to have a higher turnout than those with a large number of electors (Table 7.9 and Table 7.10). This pattern was obvious both in the 1998 and 2001 elections.

This pattern could be due to several reasons. Candidates with smaller electorates may find it easier to make themselves known to voters, or more voters may already know them. Other factors could be that rural or smaller electorates are more interested/involved in local government, or maintain a greater sense of ‘civic duty’. This theme is examined further in Table 7.13 and Figure 7.9.

**Table 7.9: Number of electors per position, 1998 - 2001**

TA Turnout	Number of electors per member	
	1998	2001
High (70% and over)	1,390	634
Medium-high (60-69%)	1,595	1,516
Medium-low (50-59%)	3,616	2,532
Low (less than 50%)	5,779	6,626
Total	N/A	2,980

N/A – Not available

**Table 7.10: Average number of electors per authority, 1998 - 2001**

TA Turnout	Average number of electors	
	1998	2001
High (70% and over)	15,449	6,181
Medium-high (60-69%)	17,388	17,140
Medium-low (50-59%)	52,284	29,228
Low (less than 50%)	90,710	96,555
Total	N/A	50,529

N/A – Not available

### Unopposed candidates

A small proportion of candidates were elected unopposed. In the cities, 2 mayors and 5 councillors were elected unopposed. In the districts, 7 mayors were unopposed, as well as 20% of candidates in the larger districts and 17% of candidates in the smaller districts.

Table 7.11 sorts the number of electors per electable position into three categories (listed below) and compares these groupings with the levels of turnout used elsewhere in this section. The three categories of electors per position are defined as:

- Low = 2,000 or less electors per position
- Medium = 2,001 – 3,000 electors per position
- High = 3,001 or more electors per position.

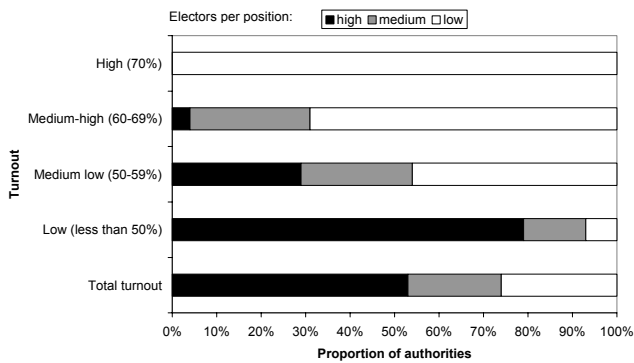
The councils with high turnout levels had low levels of electors per position (Table 7.11). Councils with low turnout levels had comparatively high level of electors per position. This pattern can be seen more clearly in Figure 7.8.

**Table 7.11: Proportion of electors per position and turnout levels, 1998 - 2001**

TA Turnout	Proportion of electors per position	
	1998	2001
High (70% and over)	13% high	0% high
	25% medium	0% medium
	63% low	100% low
Medium-high (60-69%)	7% high	4% high
	50% medium	27% medium
	43% low	69% low
Medium-low (50-59%)	50% high	29% high
	45% medium	25% medium
	5% low	46% low
Low (less than 50%)	71% high	79% high
	29% medium	14% medium
	0% low	7% low
Total	N/A	53% high
	N/A	21% medium
	N/A	26% low

*N/A – Not available*

**Figure 7.8: Turnout by proportion of electors per position, 2001**



**Local authority type**

This sub-section looks at patterns of voting and turnout between urban and rural territorial authorities. All territorial authorities were classified as one of four types<sup>6</sup>:

- **Rural** – 50% or more of the council population living in a rural centre and/or other rural area (n=19 TAs)
- **Mixed** – Less than 50% of the council population living in a rural and/or other rural area, and less than 50% of the population living in a main urban area and/or a secondary urban area (n=16 TAs)

<sup>6</sup> As defined by applying the criteria listed below to Statistics New Zealand's categories of "main urban areas", "secondary urban areas", "minor urban areas", "rural centre" and "other rural"

- **Mainly urban** – More than 50% of the council population living in main urban area and/or a secondary urban area (n=21 TAs)
- **Urban** – 90% or more of the council population living in a main urban area (n=18 TAs).

Table 7.12 shows that the urban authorities on average had the lowest turnout. Turnout amongst the other authorities was higher than the urban authorities but the same across authorities in the rural, mixed and mainly urban categories.

**Table 7.12: Average turnout by urban/rural status of territorial authorities, 1998 - 2001<sup>7</sup>**

Type of TA	Average turnout	
	1998	2001
Rural	67%	58%
Mixed	61%	58%
Mainly urban	57%	58%
Urban	51%	45%

<sup>7</sup> Different definition of rural/urban used between 1998 and 2001 so results are not strictly comparable

**Table 7.13: Proportion of rural/urban territorial authorities by turnout levels, 1998 - 2001**

Turnout	Proportion of local authority type	
	1998	2001
High (70% and over)	75% urban	0% urban
	0% mainly urban	25% mainly urban
	25% mixed	13% mixed
	0% rural	63% rural
Medium-high (60-69%)	61% urban	4% urban
	14% mainly urban	38% mainly urban
	25% mixed	31% mixed
	0% rural	27% rural
Medium-low (50-59%)	27% urban	29% urban
	9% mainly urban	25% mainly urban
	32% mixed	25% mixed
	32% rural	21% rural
Low (less than 50%)	0% urban	71% urban
	29% mainly urban	14% mainly urban
	14% mixed	7% mixed
	57% rural	7% rural
Total	N/A	25% urban
	N/A	28% mixed
	N/A	22% mainly urban
	N/A	25% rural

N/A – Not available

**Figure 7.9: Turnout levels by rural/urban territorial authorities, 2001**

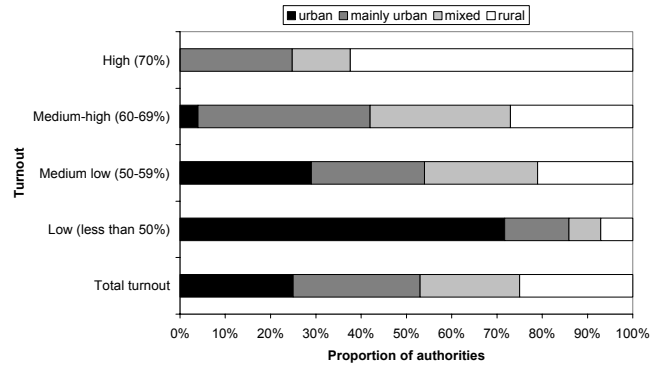


Table 7.13 and Figure 7.9 show the turnout levels of territorial authorities by their urban/rural category. Authorities with low turnout were predominantly urban, while authorities with high turnout levels were predominantly rural.

Table 7.14 shows that the more urban the territorial authority, the higher the average number of candidates per electable position.

**Table 7.14: Average candidates per position, 2001**

Type of TA	2001
Rural	1.73
Mixed urban/rural	1.83
Urban with rural fringe	2.05
Urban	2.76
Total	2.14

### Community board turnout

Almost a third of community boards were elected unopposed (Table 7.15). In some cases there were fewer candidates than available positions, resulting in 10 positions nationally being unfilled.

**Table 7.15: Average community board turnout, 1998 - 2001**

	Average turnout	
	1998 (n=143)	2001 (n=142)
70%+	19%	6%
60-69%	19%	18%
50-59%	22%	27%
40-49%	17%	11%
30-39%	2%	8%
No contest	22%	31%

The proportion of uncontested elections was higher than in 1998. Community boards were also less contested than in 1998 (Table 7.15).

While the average turnout amongst community boards was down from 1998 the level of electors per community remained relatively unchanged (Table 7.16).

**Table 7.16: Average electors per community board, 1998 - 2001**

	Average number of electors per board	
	1998	2001
Under 1,000	15%	18%
1-3,000	30%	31%
3-5,000	16%	17%
5-10,000	14%	13%
10-20,000	7%	5%
Over 20,000	17%	17%

Table 7.17 compares the levels of turnout and electors per board as presented in Table 7.15 and Table 7.16. Community boards with higher levels of electors generally had lower levels of turnout compared to other community boards. This is in keeping with the pattern observed for territorial authorities.

**Table 7.17: Average community board turnout by electors per community board, 2001**

	Average community board turnout					
	No contest	30-39%	40-49%	50-59%	60-69%	70%+
Under 1,000	12	0	0	6	2	5
1-3,000	16	0	1	13	12	2
3-5,000	7	0	1	7	8	1
5-10,000	7	0	1	8	2	0
10-20,000	2	1	1	2	1	0
Over 20,000	0	10	11	3	0	0



**Part Two:  
Individual Local Authorities**

37

## Section 8: Population of Local Authorities

The 2001 *Census of Population and Dwellings* issued by Statistics New Zealand provided the basis for defining smaller and larger cities, districts and regions.

### Regions

The following six larger regions have populations over 200,000: Auckland, Waikato, Bay of Plenty, Manawatu-Wanganui, Wellington and Canterbury.

The six other smaller regions, all with populations under 200,000, were: Northland, Hawke's Bay, Taranaki, West Coast, Otago and Southland.

### District Health Boards

The following nine DHB's have a population over 150,000: Waitemata, Auckland, Counties-Manukau, Waikato, Bay of Plenty, MidCentral, Capital and Coast, Canterbury, and Otago.

The remaining twelve DHBs with a population under 150,000 were: Northland, Tairāwhiti, Lakes, Hawke's Bay, Taranaki, Whanganui, Wairarapa, Hutt, Nelson, Marlborough, West Coast, South Canterbury, and Southland.

### Unitary Authorities

Four areas have authorities that combine the functions of a regional council with those of a city or district council. These have been listed with other cities and districts. They are: Nelson, Gisborne, Tasman and Marlborough.

### Cities

The following eight larger cities had populations over 100,000: North Shore, Waitakere, Auckland, Manukau, Hamilton, Wellington, Christchurch and Dunedin.

The seven smaller cities with populations under 100,000 were: Napier,

Palmerston North, Porirua, Upper Hutt, Lower Hutt, Nelson and Invercargill.

### Districts

The following 32 larger districts had populations over 20,000: Far North, Whangarei, Rodney, Papakura, Franklin, Thames-Coromandel, Waikato, Matamata-Piako, Waipa, South Waikato, Taupo, Western Bay of Plenty, Tauranga, Rotorua, Whakatane, Gisborne, Hastings, New Plymouth, South Taranaki, Manawatu, Wanganui, Horowhenua, Kapiti Coast, Masterton, Tasman, Marlborough, Waimakariri, Selwyn, Ashburton, Timaru, Waitaki, and Southland.

Some of these districts include major urban areas.

The following 27 districts had populations under 20,000: Kaipara, Hauraki, Otorohanga, Waitomo, Kawerau, Opotiki, Wairoa, Central Hawkes Bay, Stratford, Ruapehu, Rangitikei, Tararua, Carterton, South Wairarapa, Kaikoura, Buller, Grey, Westland, Hurunui, Banks Peninsula, Mackenzie, Waimate, Chatham Islands, Central Otago, Queenstown-Lakes, Clutha and Gore.

## Section 9: Regional Council Elections

This section presents information about candidates, members and voting patterns for each of the 12 regional councils. Brief notes are followed by Table 9.11 listing the individual regional councils, which serve most of New Zealand. The four unitary authorities<sup>8</sup>, which have both city or district council and regional functions, are dealt with as city or district councils in the next two sections.

### Positions and Candidates

Overall, there was less interest in standing for regional councils in 2001 than in 1998, as measured by the total number of candidates and the average number contesting each position (Table 9.1).

**Table 9.1: Regional council candidate numbers, 1989 - 2001**

Positions	1989	1992	1995	1998	2001
Council positions	198	130	131	133	134
Candidates	680	299	278	320	300
Candidates per position	3.4	2.3	2.1	2.4	2.2
Councillors unopposed	5	15	14	14	20

### Contests

There was one more regional council position in 2001 than in 1998 (Table 9.2). However, fewer positions and constituencies were contested in 2001; 85% of positions and 75% of constituencies were contested. This compares to 89% of positions and 87% of constituencies in 1998.

<sup>8</sup> Nelson, Gisborne, Tasman and Marlborough

**Table 9.2: Contested regional council constituencies, 1989 - 2001**

Contests	1989	1992	1995	1998	2001
Constituencies	*	57	67	67	69
Contested constituencies	*	45	56	58	52

### Sitting members re-elected

From a total of 134 councillors elected in 2001, the proportion of sitting members who were re-elected was the highest since 1989 (Table 9.3).

**Table 9.3: Sitting regional councillors re-elected, 1989 - 2001**

Re-elected	1989	1992	1995	1998	2001
Proportion of councillors who were previously sitting members	*	57%	69%	59%	70%

\* Because all councils were re-constituted in 1989 there were no 'sitting members'

### Election of women

The number of women candidates increased from 1998, while the number and proportion of women on councils has decreased slightly (Table 9.4). Women comprised 23% of candidates and made up 26% of council members.

**Table 9.4: Representation of women in regional council elections, 1989 - 2001**

Women	1989	1992	1995	1998	2001
Women candidates	98	58	63	60	70
Candidates who were women	14%	19%	23%	19%	23%
Women councillors	44	33	38	37	35
Councillors who were women	22%	25%	29%	28%	26%
Women candidates elected	45%	57%	60%	62%	50%

### Electors

There was an increase in the number of residential electors enrolled to vote for regional council elections (Table 9.5). However, the number and percentage of ratepayer electors regional continues to decline. The ratepayer franchise accounts for just over 1% of electors in the Otago Region, and less than 1% in all others.

**Table 9.5: Electors on the roll for regional councils, 1989 - 2001**

Electors	1989	1992	1995	1998	2001
Residential electors	2.149m	2.166m	2.286m	2.396m	2.475m
Ratepayer electors	*	16,224	11,489	11,027	9,263
Electors on ratepayer franchise	*	0.74%	0.50%	0.46%	0.37%

\*There was no ratepayer franchise in 1989.

### Representation

On average, each regional councillor represented just over 18,500 electors following the 2001 elections (Table 9.6). Average representation was around 21,300 in the North Island regions and 13,000 in South Island regions. Actual representation ranged from the average councillor representing nearly 60,500 electors in the Auckland Region to 3,800 electors in the West Coast region.

**Table 9.6: Average electors per councillor on regional councils, 1989 - 2001**

Representation	1989	1992	1995	1998	2001
Electors per councillor	10,852	16,786	17,536	18,097	18,543

### Voter turnout

Overall, the average turnout in contested constituencies was 49%, a greater proportion than in 1995, but lower than all other elections since 1989 (Table 9.7). The West Coast Region had the highest turnout in the 2001 election, and the highest turnout (79%) for any regional council since 1989. The Auckland Region recorded the lowest (43%). In each of the five elections since 1989, the highest overall average turnouts have been recorded for the West Coast Region (ranging from 70% to 79%). The lowest turnout has been in the Auckland Region (ranging from 34% to 46%).

Compared to the previous election in 1998, turnout decreased or stayed the same for eleven of the twelve regions the exception being the West Coast. Northland Region had the greatest decline in turnout between 1998 and 2001. As in previous elections, the level of turnout for ratepayer electors was considerably higher than turnout for residential electors in all regions, except for the West Coast where the ratepayer turnout was only marginally higher than the proportion of resident turnout.

**Table 9.7: Voter turnout for regional council elections, 1989 - 2001**

Turnout	1989	1992	1995	1998	2001
Overall average turnout for all electors	56%	52%	48%	53%	49%
Average ratepayer turnout*	none	67%	67%	60%	76%

\* There was no ratepayer franchise in 1989. Constituencies where no ratepayer voting information was available have been excluded in 2001

Note: Details of ratepayer voting within the Auckland Region were not available

### Resident and ratepayer electors who voted

Table 9.8 shows the number of residential and ratepayer electors who voted. The number of ratepayer electors who voted steadily declined between 1992 and 1998, but has risen slightly between 1998 and 2001.

In the period between 1998 and 2001 the number of ratepayer electors who voted has increased while the number of ratepayer electors on the roll has declined (Table 9.5) to give a substantial increase in the ratepayer turnout (Table 9.7). In contrast, the number of resident electors on the roll had increased slightly in the 1998 to 2001 period (Table 9.5) while the number of resident electors who voted declined which resulted in a decline in resident turnout (Table 9.7).

**Table 9.8: Electors who voted in regional council elections, 1989-2001**

Electors who voted	1989	1992	1995	1998	2001
Resident electors who voted	1.182m	1.047m	1.005m	1.166m	1.093m
Ratepayer electors who voted	*	10,284	4,889	4,323	4,799

\* Ratepayer franchise was not available in 1989

### Special votes

There were fewer special votes recorded in 2001 than in 1998 (Table 9.9). However special votes still amounted to less than 1% of all votes. A greater proportion of special votes were allowed in North Island regions (78%) than in South Island regions (61%).

**Table 9.9: Special votes in regional council elections, 1989 - 2001**

Special votes	1989	1992	1995	1998	2001
Special votes cast	9,213	7,772	7,305	8,434	8,096
Special votes of all votes	0.8%	0.7%	0.7%	0.7%	0.7%
Proportion of special votes allowed	68%	78%	68%	73%	73%

*Special votes exclude Hawke's Bay Region in 2001*

### Informal votes

There was a decrease in the number of votes recorded as informal between 1998 and 2001 (Table 9.10).

**Table 9.10: Informal votes in regional council elections, 1989 - 2001**

	1989	1992	1995	1998	2001
Informal votes*	40,116	73,637	88,232	105,039	66,848
Proportion of total votes	3%	7%	9%	9%	6%

*\* Informal votes includes blanks in 1998, and excludes Hawke's Bay Region in 2001*

**Table 9.11: Regional Council Elections 2001**

REGION	POSITIONS AND CANDIDATES				CONTESTS Constituencies contested (N)	SITTING MEMBERS RE-ELECTED				ELECTION OF WOMEN				Representation Ratio of electors per council member (N)
	Council positions (N)	Council candidates (N)	Candidates per position (N)	Councillors elected unopposed (N)		Candidates sitting members (N)	Candidates sitting members (%)	Sitting members elected (N)	Council sitting members (%)	Women candidates (N)	who were women (%)	Women councillors (N)	who were women (%)	
Northland	8	17	2.1	0	3/3 constituencies	7	39%	6	75%	4	24%	2	25%	11,790
Auckland	13	50	3.8	0	6/6 constituencies	10	53%	6	46%	15	30%	5	38%	60,508
Waikato	14	34	2.4	3	7/10 constituencies	11	37%	10	71%	12	35%	7	50%	17,453
Bay of Plenty	12	19	1.6	2	3/4 constituencies	8	16%	7	58%	5	26%	4	33%	13,672
Hawke's Bay	9	17	1.9	1	4/5 constituencies	7	37%	6	67%	5	29%	3	33%	10,855
Taranaki	10	18	1.8	3	2/4 constituencies	7	70%	7	70%	4	22%	1	10%	7,306
Manawatu-Wanganui	11	18	1.6	6	3/8 constituencies	10	59%	10	91%	4	22%	2	18%	13,902
Wellington	13	38	2.9	2	4/6 constituencies	10	43%	8	62%	8	21%	4	31%	23,240
West Coast	6	10	1.7	0	3/3 constituencies	4	15%	2	33%	1	10%	0	0%	3,789
Canterbury	14	30	2.1	2	7/9 constituencies	13	38%	13	93%	4	13%	3	21%	24,998
Otago	12	23	1.9	0	4/4 constituencies	10	56%	9	75%	3	13%	2	17%	11,184
Southland	12	26	2.2	1	6/7 constituencies	10	26%	10	83%	5	19%	2	17%	5,228
North Island	90	211	2.3	17	32/46 constituencies	70	38%	60	67%	57	27%	28	31%	21,279
South Island	44	89	2.0	3	20/23 constituencies	37	32%	34	77%	13	15%	7	16%	12,946
Larger Regions	77	189	2.5	15	30/43 constituencies	62	36%	54	70%	48	25%	25	32%	25,974
Smaller Regions	57	111	1.9	5	22/26 constituencies	45	35%	40	70%	22	20%	10	18%	8,504
New Zealand Regional Councils	134	300	2.2	20	52/69 constituencies	107	36%	94	70%	70	23%	35	26%	18,543

Table 9.11: Regional Council Elections 2001 (continued)

REGION	ELECTORS (ALL CONSTITUENCIES)				VOTING AND TURNOUT (CONTESTED CONSTITUENCIES)					
	Resident	Ratepayer	Electors	Total	Resident	Resident	Ratepayer	Ratepayer	Total	Total
	electors	electors	ratepayer							
on roll	on roll	franchise	electors	(N)	(%)	(N)	(%)	(N)	(%)	
Northland*	93,650	671	0.71%	94,321	41,889	45%	192	55%	42,081	45%
Auckland	785,086	1,515	0.19%	786,601	339,797	43%	1,202	79%	340,999	43%
Waikato	241,996	2,349	0.96%	244,345	97,747	49%	866	72%	98,613	49%
Bay of Plenty	163,160	900	0.55%	164,060	70,673	52%	338	84%	71,011	52%
Hawke's Bay	97,694	0	0.00%	97,694	48,730	55%	No count	No count	48,730	55%
Taranaki <sup>^</sup>	72,997	62	0.08%	73,059	32,095	61%	41	195%	32,136	61%
Manawatu-Wanganui	152,672	253	0.17%	152,925	42,625	53%	53	82%	42,678	53%
Wellington	301,502	613	0.20%	302,115	119,341	50%	126	86%	119,467	50%
West Coast	22,596	139	0.61%	22,735	17,746	79%	112	81%	17,858	79%
Canterbury	348,887	1,079	0.31%	349,966	167,501	52%	727	85%	168,228	52%
Otago	132,695	1,514	1.13%	134,209	80,324	61%	1,059	70%	81,383	61%
Southland <sup>^</sup>	62,566	168	0.27%	62,734	34,757	59%	83	104%	34,840	59%
North Island	1,908,757	6,363	0.33%	1,915,120	792,897	47%	2,818	76%	795,715	47%
South Island	566,744	2,900	0.51%	569,644	300,328	56%	1,981	77%	302,309	56%
Larger Regions	1,993,303	6,709	0.34%	2,000,012	837,684	48%	3,312	79%	840,996	48%
Smaller Regions	482,198	2,554	0.53%	484,752	255,541	57%	1,487	71%	257,028	57%
New Zealand										
Regional Councils	2,475,501	9,263	0.37%	2,484,764	1,093,225	49%	4,799	76%	1,098,024	49%

**No count** - for some constituencies the number of ratepayer voters were not separated from resident voters. In these instances ratepayer turnout has been calculated using only constituencies where complete data exists. This does not affect overall votes nor turnout as all constituencies are included in these calculations.

\* - ratepayer information was not available for all of Northland Regional Council constituencies.

<sup>^</sup> - the ratepayer turnout is greater than 100% due to the number of ratepayer voters exceeding the number of registered ratepayer electors. This is because the of special votes cast by ratepayers not on the ratepayer roll and the relatively small number of ratepayers in general

**Table 9.11: Regional Council Elections 2001 (continued)**

REGION	SPECIAL VOTES				INFORMAL VOTES	
	Special votes cast (N)	Special votes (%)	Special votes allowed (N)	Special votes (%)	Informal votes (N)	Informal of total votes (%)
Northland	377	0.9%	239	63%	531	1%
Auckland	1,762	0.5%	1,637	93%	11,414	3%
Waikato	599	0.6%	518	86%	9,633	10%
Bay of Plenty	746	1.1%	247	33%	3,491	5%
Hawke's Bay	No count				No count	
Taranaki	215	0.7%	161	75%	2,019	6%
Manawatu-Wanganui	337	0.8%	325	96%	2,791	7%
Wellington	1,522	1.3%	1,221	80%	8,061	7%
West Coast	110	0.6%	100	91%	1,049	6%
Canterbury	1,502	0.9%	854	57%	18,805	11%
Otago	856	1.1%	551	64%	3,332	4%
Southland	70	0.2%	55	79%	3,953	11%
North Island	5,558	0.7%	4,348	78%	39,709	5%
South Island	2,538	0.8%	1,560	61%	27,139	9%
Larger Regions	6,468	0.8%	4,802	74%	54,195	6%
Smaller Regions	1,628	0.6%	1,106	68%	12,653	5%
New Zealand Regional Councils	8,096	0.7%	5,908	73%	66,848	6%

## Section 10: District Health Board Election

This section presents information about candidates, members and voting patterns for each of the 21 District Health Boards (DHBs). Brief notes are followed by Table 10.8 listing the individual DHBs. District Health Boards were introduced on 1 January 2001. Provisional members were appointed prior to the October 13 2001 local body elections. All people on the general electoral roll were entitled to vote in the District Health Board elections. There was no ratepayer franchise for these elections.

### Positions and Candidates

Each district health board comprises of seven elected members. With 21 DHB's nationally, there were 147 electable positions (excluding up to four government appointed positions per board). Only one candidate was elected unopposed, in the Queenstown-Lakes constituency of the Southland DHB (Table 10.1).

**Table 10.1: Positions on district health boards, 2001**

Positions	2001
Positions	147
Candidates	1,085
Candidates per position	7.4
Elected unopposed	1

**Table 10.2: Contested district health board constituencies, 2001**

Contests	2001
Constituencies	75
Contested constituencies	74

### Election of women

A large minority of DHB candidates were women (Table 10.3). A similar proportion of women were successfully elected onto a DHB. 14% of women candidates were elected onto a DHB.

**Table 10.3: Representation of women in DHB elections, 2001**

Women	2001
Women candidates	479
Candidates who were women	44%
Women members	65
Members who were women	44%
Women candidates elected	14%

### Electors, turnout and representation

There were over 2.5 million eligible electors enrolled nationally to vote in district health board elections, half of who voted in the DHB elections (Table 10.4). There were 17,433 voters for every DHB board member (excluding appointed/non-elected members).

**Table 10.4: Average electors per member for DHB elections, 2001**

Electors	2001
Electors on roll	2.563m
Electors per member	17,433
Average elector turnout	50%

### Resident electors who voted

Just over one and quarter million electors voted in the first district health board election in 2001 (Table 10.5).

**Table 10.5: Electors who voted in district health board elections, 2001**

Electors who voted	2001
Electors who voted	1.265m

### Special votes

There were just under 10,000 special votes cast in the first DHB elections (Table 10.6). Of which, 69% were allowed. The number of specials cast represents less than 1% of the total votes received.

**Table 10.6: Special votes cast in DHB elections, 2001**

Special Votes	2001
Special Votes cast	9,589
Special Votes of all votes	0.8%
Number of special votes allowed	6,870
Proportion of special votes allowed	69%

### Informal votes

There were over 70,000 informal votes cast in the district health board elections in 2001 (Table 10.7). This meant that almost 6% of all votes cast were informal votes.

**Table 10.7: Informal votes in DHB elections, 2001**

Informal Votes	2001
Informal votes	71,170
Proportion of total votes	5.6%

Table 10.8: District Health Board Elections 2001

DHB	CONSTITUENCY	POSITIONS AND CANDIDATES				ELECTION OF WOMEN				Representation Electors per board member (N)
		Elected members (N)	Candidates (N)	Candidates		Women candidates (N)	Women candidates (%)	Women members (N)	Women members (%)	
				per position (N)	Elected unopposed (N)					
Northland	Far North	3	30	10	0	14	47%	2	67%	11,360
Northland	Whangarei	3	31	10	0	14	45%	0	0%	16,002
Northland	Kaipara	1	8	8	0	3	38%	0	0%	11,611
Northland District Health Board		7	69	10	0	31	45%	2	29%	13,385
Waitemata	Rodney	1	13	13	0	5	38%	1	100%	52,583
Waitemata	North Shore	3	50	17	0	16	32%	1	33%	43,527
Waitemata	Waitakere	3	40	13	0	17	43%	1	33%	36,425
Waitemata District Health Board		7	103	15	0	38	37%	3	43%	41,777
Auckland	Northwest and Gulf	2	22	11	0	8	36%	1	50%	35,885
Auckland	Northeast	2	27	14	0	14	52%	1	50%	36,758
Auckland	South	3	19	6	0	5	26%	2	67%	27,668
Auckland District Health Board		7	68	10	0	27	40%	4	57%	32,613
Counties-Manukau	Manukau	2	29	15	0	10	34%	0	0%	33,883
Counties-Manukau	Mangere	2	19	10	0	11	58%	0	0%	36,272
Counties-Manukau	Manurewa	1	10	10	0	6	60%	0	0%	39,106
Counties-Manukau	Papakura	1	8	8	0	4	50%	0	0%	27,461
Counties-Manukau	Franklin	1	11	11	0	5	45%	0	0%	33,660
Counties-Manukau District Health Board		7	77	11	0	36	47%	0	0%	34,362
Waikato	Thames-Coromandel	2	14	7	0	5	36%	2	100%	25,452
Waikato	Waikato	1	5	5	0	2	40%	0	0%	25,885

Table 10.8: District Health Board Elections 2001 (continued)

DHB	CONSTITUENCY	POSITIONS AND CANDIDATES				ELECTION OF WOMEN				Representation Electors per board member (N)
		Elected members (N)	Candidates (N)	Candidates		Women candidates (N)	Women candidates (%)	Women members (N)	Women members (%)	
				per position (N)	Elected unopposed (N)					
Waikato	Hamilton	2	26	13	0	9	35%	0	0%	39,245
Waikato	South Waikato	2	21	11	0	14	67%	1	50%	29,959
Waikato District Health Board		7	66	9	0	30	45%	3	43%	30,742
Bay of Plenty	Western Bay of Plenty	2	16	8	0	8	50%	1	50%	13,421
Bay of Plenty	Tauranga	3	33	11	0	13	39%	1	33%	21,560
Bay of Plenty	Whakatane	2	13	7	0	9	69%	1	50%	15,471
Bay of Plenty District Health Board		7	62	9	0	30	48%	3	43%	17,495
Lakes District	Rotorua North	2	13	7	0	4	31%	1	50%	10,851
Lakes District	Rotorua South	3	10	3	0	4	40%	1	33%	7,047
Lakes District	Taupo	2	6	3	0	5	83%	2	100%	10,525
Lakes District District Health Board		7	29	4	0	13	45%	4	57%	9,127
Tairāwhiti	Gisborne	5	17	3	0	7	41%	2	40%	4,048
Tairāwhiti	Tairāwhiti	2	8	4	0	4	50%	2	100%	4,074
Tairāwhiti District Health Board		7	25	4	0	11	44%	4	57%	4,055
Hawke's Bay	Wairoa	1	4	4	0	2	50%	0	0%	5,596
Hawke's Bay	Hastings	3	24	8	0	15	63%	1	33%	15,013
Hawke's Bay	Napier-Chatham Islands	2	15	8	0	9	60%	1	50%	19,180
Hawke's Bay	Central Hawke's Bay	1	2	2	0	1	50%	1	100%	8,594
Hawke's Bay District Health Board		7	45	6	0	27	60%	3	43%	13,941

Table 10.8: District Health Board Elections 2001 (continued)

DHB	CONSTITUENCY	POSITIONS AND CANDIDATES				ELECTION OF WOMEN				Representation Electors per board member (N)
		Elected members (N)	Candidates (N)	Candidates		Women candidates (N)	Women candidates (%)	Women members (N)	Women members (%)	
				per position (N)	Elected unopposed (N)					
Taranaki	New Plymouth	3	12	4	0	3	25%	1	33%	11,405
Taranaki	Taranaki North	2	9	5	0	5	56%	1	50%	7,193
Taranaki	Taranaki South	2	6	3	0	2	33%	1	50%	9,216
Taranaki District Health Board		7	27	4	0	10	37%	3	43%	9,576
Whanganui	Wanganui	4	30	8	0	12	40%	2	50%	7,486
Whanganui	Waimarino	1	4	4	0	2	50%	1	100%	5,676
Whanganui	Rangitikei	2	9	5	0	7	78%	1	50%	5,802
Whanganui District Health Board		7	43	6	0	21	49%	4	57%	6,746
MidCentral	Manawatu	1	3	3	0	3	100%	1	100%	19,356
MidCentral	Palmerston North	3	32	11	0	10	31%	1	33%	16,964
MidCentral	Tararua	1	10	10	0	3	30%	1	100%	12,152
MidCentral	Horowhenua	2	12	6	0	5	42%	1	50%	13,047
MidCentral District Health Board		7	57	8	0	21	37%	4	57%	15,499
Wairarapa	Masterton	4	23	6	0	12	52%	3	75%	4,019
Wairarapa	Carterton	1	5	5	0	4	80%	1	100%	4,917
Wairarapa	South Wairarapa	2	8	4	0	3	38%	1	50%	3,152
Wairarapa District Health Board		7	36	5	0	19	53%	5	71%	3,900
Capital and Coast	Kapiti Coast	1	11	11	0	6	55%	0	0%	31,204
Capital and Coast	Porirua	1	9	9	0	4	44%	1	100%	29,856
Capital and Coast	Northwestern	2	21	11	0	8	38%	2	100%	26,381

Table 10.8: District Health Board Elections 2001 (continued)

DHB	CONSTITUENCY	POSITIONS AND CANDIDATES				ELECTION OF WOMEN				Representation Electors per board member (N)
		Elected members (N)	Candidates (N)	Candidates		Women candidates (N)	Women candidates (%)	Women members (N)	Women members (%)	
				per position (N)	Elected unopposed (N)					
Capital and Coast	Lambton	1	12	12	0	6	50%	0	0%	26,072
Capital and Coast	Southeastern	2	16	8	0	8	50%	1	50%	21,821
Capital and Coast District Health Board		7	69	10	0	32	46%	4	57%	26,219
Hutt Valley	Upper Hutt	2	9	5	0	4	44%	1	50%	12,661
Hutt Valley	Lower Hutt Central	3	28	9	0	14	50%	1	33%	14,071
Hutt Valley	Harbour	1	7	7	0	2	29%	1	100%	12,157
Hutt Valley	Wainuiomata	1	4	4	0	2	50%	0	0%	10,646
Hutt Valley District Health Board		7	48	7	0	22	46%	3	43%	12,905
Nelson Marlborough	Tasman	2	8	4	0	3	38%	2	100%	9,724
Nelson Marlborough	Richmond	1	6	6	0	2	33%	1	100%	9,330
Nelson Marlborough	Nelson	2	21	11	0	12	57%	1	50%	15,208
Nelson Marlborough	Marlborough	1	9	9	0	7	78%	0	0%	12,653
Nelson Marlborough	Blenheim	1	7	7	0	3	43%	0	0%	16,744
Nelson Marlborough District Health Board		7	51	7	0	27	53%	4	57%	12,656
West Coast	Buller	2	8	4	0	5	63%	1	50%	3,461
West Coast	Grey	3	11	4	0	5	45%	1	33%	3,290
West Coast	Westland	2	5	3	0	3	60%	1	50%	2,904
West Coast District Health Board		7	24	3	0	13	54%	3	43%	3,228
Canterbury	North Canterbury	1	6	6	0	2	33%	0	0%	35,899
Canterbury	Christchurch	5	75	15	0	20	27%	2	40%	45,559

Table 10.8: District Health Board Elections 2001 (continued)

DHB	CONSTITUENCY	POSITIONS AND CANDIDATES				ELECTION OF WOMEN				Representation Electors per board member (N)
		Elected members (N)	Candidates (N)	Candidates		Women candidates (N)	Women candidates (%)	Women members (N)	Women members (%)	
				per position (N)	Elected unopposed (N)					
Canterbury	Mid-Canterbury	1	3	3	0	3	<b>100%</b>	1	<b>100%</b>	44,370
Canterbury District Health Board		7	84	12	0	25	<b>30%</b>	3	<b>43%</b>	44,009
South Canterbury	Timaru	4	10	3	0	3	<b>30%</b>	1	<b>25%</b>	5,467
South Canterbury	Temuka-Pleasant Point	1	6	6	0	3	<b>50%</b>	0	<b>0%</b>	4,374
South Canterbury	MacKenzie-Geraldine	1	4	4	0	2	<b>50%</b>	0	<b>0%</b>	6,074
South Canterbury	Waimate	1	3	3	0	1	<b>33%</b>	0	<b>0%</b>	5,397
South Canterbury District Health Board		7	23	3	0	9	<b>39%</b>	1	<b>14%</b>	5,388
Otago	Waitaki	1	7	7	0	5	<b>71%</b>	1	<b>100%</b>	15,311
Otago	Central Otago	1	3	3	0	0	<b>0%</b>	0	<b>0%</b>	14,480
Otago	Clutha	1	5	5	0	0	<b>0%</b>	0	<b>0%</b>	12,379
Otago	Dunedin North	2	16	8	0	9	<b>56%</b>	1	<b>50%</b>	19,989
Otago	Dunedin South	2	13	7	0	5	<b>38%</b>	2	<b>100%</b>	21,928
Otago District Health Board		7	44	6	0	19	<b>43%</b>	4	<b>57%</b>	18,001
Southland	Queenstown-Lakes	1	1	1	1	Elected unopposed				7,882
Southland	Southland	2	8	4	0	4	<b>50%</b>	1	<b>50%</b>	10,141
Southland	Gore	1	2	2	0	0	<b>0%</b>	0	<b>0%</b>	8,985
Southland	Invercargill	3	24	8	0	14	<b>58%</b>	0	<b>0%</b>	12,065
Southland District Health Board		7	35	5	1	18	<b>51%</b>	1	<b>14%</b>	10,478

**Table 10.8: District Health Board Elections 2001 (continued)**

DHB	CONSTITUENCY	POSITIONS AND CANDIDATES				ELECTION OF WOMEN				Representation
		Elected members (N)	Candidates (N)	Candidates		Women candidates (N)	Women candidates (%)	Women members (N)	Women members (%)	Electors per board member (N)
				per position (N)	Elected unopposed (N)					
	North Island DHBs	105	824	8	0	368	<b>45%</b>	49	<b>47%</b>	18,156
	South Island DHBs	42	261	6	1	111	<b>43%</b>	16	<b>38%</b>	15,626
	Large DHBs	63	630	10	0	258	<b>41%</b>	28	<b>44%</b>	28,969
	Small DHBs	84	455	5	1	221	<b>49%</b>	37	<b>44%</b>	8,782
	New Zealand District Health Boards	147	1,085	7	1	479	<b>44%</b>	65	<b>44%</b>	17,433

Table 10.8: District Health Board Elections 2001 (continued)

DHB	CONSTITUENCY	VOTING, ELECTORS & TURNOUT			SPECIAL VOTES				INFORMAL VOTES		
		Resident Voters (N)	Resident Electors (N)	Turnout (%)	Special Votes Cast (N)	Special Votes (%)	Special Votes Allowed (N)	Special Votes (%)	Informal Votes (N)	Informal Votes (%)	
Northland	Far North	15,336	34,080	45%	167	1.1%	161	96%	785	5.1%	
Northland	Whangarei	22,072	48,007	46%			No Count		1,285	5.8%	
Northland	Kaipara	5,805	11,611	50%			No Count		18	0.3%	
Northland District Health Board		43,213	93,698	46%	167	0.8%	161	96%	2,088	4.8%	
Waitemata	Rodney	18,258	52,583	35%	40	0.2%	22	55%	69	0.4%	
Waitemata	North Shore	49,478	130,581	38%			No Count		3,994	8.1%	
Waitemata	Waitakere	41,438	109,274	38%			No Count		2,452	5.9%	
Waitemata District Health Board		109,174	292,438	37%	40	0.0%	22	55%	6,515	6.0%	
Auckland	Northwest and Gulf	30,719	71,770	43%	661	2.2%	451	68%	160	0.5%	
Auckland	Northeast	34,743	73,516	47%			No Count	273	No Count	196	0.6%
Auckland	South	43,352	83,004	52%	391	0.9%	240	61%	494	1.1%	
Auckland District Health Board		108,814	228,290	48%	1,052	1.0%	964	66%	850	0.8%	
Counties-Manukau	Manukau	26,915	67,765	40%	117	0.4%	62	53%	2,360	8.8%	
Counties-Manukau	Mangere	26,520	72,544	37%	284	1.1%	156	55%	1,669	6.3%	
Counties-Manukau	Manurewa	12,331	39,106	32%	90	0.7%	38	42%	956	7.8%	
Counties-Manukau	Papakura	11,339	27,461	41%	54	0.5%	28	52%	33	0.3%	
Counties-Manukau	Franklin	15,599	33,660	46%	72	0.5%	65	90%	76	0.5%	
Counties-Manukau District Health Board		92,704	240,536	39%	617	0.7%	349	57%	5,094	5.5%	
Waikato	Thames-Coromandel	28,721	50,903	56%	231	0.8%	134	58%	2,219	7.7%	
Waikato	Waikato	12,467	25,885	48%	62	0.5%	49	79%	1,124	9.0%	

**Table 10.8: District Health Board Elections 2001 (continued)**

DHB	CONSTITUENCY	VOTING, ELECTORS & TURNOUT			SPECIAL VOTES				INFORMAL VOTES	
		Resident Voters (N)	Resident Electors (N)	Turnout (%)	Special Votes Cast (N)	Special Votes (%)	Special Votes Allowed (N)	Special Votes (%)	Informal Votes (N)	Informal Votes (%)
Waikato	Hamilton	36,920	78,489	47%	250	0.7%	235	94%	3,210	8.7%
Waikato	South Waikato	29,289	59,918	49%	202	0.7%	146	72%	2,627	9.0%
Waikato District Health Board		107,397	215,195	50%	745	0.7%	564	76%	9,180	8.5%
Bay of Plenty	Western Bay of Plenty	13,270	26,842	49%	218	1.6%	39	18%	98	0.7%
Bay of Plenty	Tauranga	33,161	64,680	51%	285	0.9%	153	54%	2,342	7.1%
Bay of Plenty	Whakatane	18,261	30,942	59%	290	1.6%	211	73%	705	3.9%
Bay of Plenty District Health Board		64,692	122,464	53%	793	1.2%	403	51%	3,145	4.9%
Lakes District	Rotorua North	9,922	21,701	46%	79	0.8%	48	61%	363	3.7%
Lakes District	Rotorua South	10,706	21,141	51%	102	1.0%	63	62%	134	1.3%
Lakes District	Taupo	12,240	21,050	58%	135	1.1%	88	65%	467	3.8%
Lakes District District Health Board		32,868	63,892	51%	316	1.0%	199	63%	964	2.9%
Tairāwhiti	Gisborne	12,484	20,240	62%	138	1.1%	118	86%	191	1.5%
Tairāwhiti	Tairāwhiti	5,153	8,148	63%	83	1.6%	59	71%	241	4.7%
Tairāwhiti District Health Board		17,637	28,388	62%	221	1.3%	177	80%	432	2.4%
Hawke's Bay	Wairoa	3,369	5,596	60%	30	0.9%	-	0%	-	0.0%
Hawke's Bay	Hastings	23,718	45,040	53%	133	0.6%	133	100%	343	1.4%
Hawke's Bay	Napier-Chatham Islands	21,663	38,360	56%	204	0.9%	148	73%	1,367	6.3%
Hawke's Bay	Central Hawke's Bay	5,493	8,594	64%	31	0.6%	25	81%	146	2.7%
Hawke's Bay District Health Board		54,243	97,590	56%	398	0.7%	306	77%	1,856	3.4%

Table 10.8: District Health Board Elections 2001 (continued)

DHB	CONSTITUENCY	VOTING, ELECTORS & TURNOUT			SPECIAL VOTES				INFORMAL VOTES	
		Resident Voters (N)	Resident Electors (N)	Turnout (%)	Special Votes Cast (N)	Special Votes (%)	Special Votes Allowed (N)	Special Votes (%)	Informal Votes (N)	Informal Votes (%)
Taranaki	New Plymouth	20,924	34,215	61%	137	0.7%	92	67%	69	0.3%
Taranaki	Taranaki North	8,557	14,385	59%	23	0.3%	19	83%	29	0.3%
Taranaki	Taranaki South	11,171	18,431	61%	62	0.6%	28	45%	409	3.7%
Taranaki District Health Board		40,652	67,031	61%	222	0.5%	139	63%	507	1.2%
Whanganui	Wanganui	17,110	29,943	57%	144	0.8%	123	85%	193	1.1%
Whanganui	Waimarino	3,668	5,676	65%	39	1.1%	34	87%	100	2.7%
Whanganui	Rangitikei	6,526	11,604	56%	39	0.6%	35	90%	695	10.6%
Whanganui District Health Board		27,304	47,223	58%	222	0.8%	192	86%	988	3.6%
MidCentral	Manawatu	10,006	19,356	52%	35	0.3%	32	91%	523	5.2%
MidCentral	Palmerston North	25,482	50,892	50%	274	1.1%	262	96%	1,798	7.1%
MidCentral	Tararua	6,934	12,152	57%	24	0.3%	15	63%	243	3.5%
MidCentral	Horowhenua	15,743	26,094	60%	63	0.4%	57	90%	754	4.8%
MidCentral District Health Board		58,165	108,494	54%	396	0.7%	366	92%	3,318	5.7%
Wairarapa	Masterton	9,778	16,076	61%	73	0.7%	61	84%	446	4.6%
Wairarapa	Carterton	3,338	4,917	68%	28	0.8%	26	93%	147	4.4%
Wairarapa	South Wairarapa	4,028	6,304	64%	21	0.5%	17	81%	111	2.8%
Wairarapa District Health Board		17,144	27,297	63%	122	0.7%	104	85%	704	4.1%
Capital and Coast	Kapiti Coast	16,405	31,204	53%	163	1.0%	163	100%	2,645	16.1%
Capital and Coast	Porirua	12,791	29,856	43%	179	1.4%	129	72%	1,118	8.7%
Capital and Coast	Northwestern	26,328	52,762	50%	248	0.9%	207	83%	2,643	10.0%

Table 10.8: District Health Board Elections 2001 (continued)

DHB	CONSTITUENCY	VOTING, ELECTORS & TURNOUT			SPECIAL VOTES				INFORMAL VOTES	
		Resident Voters (N)	Resident Electors (N)	Turnout (%)	Special Votes Cast (N)	Special Votes (%)	Special Votes Allowed (N)	Special Votes (%)	Informal Votes (N)	Informal Votes (%)
Capital and Coast	Lambton	10,913	26,072	42%	450	4.1%	392	87%	1,496	13.7%
Capital and Coast	Southeastern	21,180	43,642	49%	400	1.9%	316	79%	1,854	8.8%
Capital and Coast District Health Board		87,617	183,536	48%	1,440	1.6%	1,207	84%	9,756	11.1%
Hutt Valley	Upper Hutt	14,614	25,322	58%	93	0.6%	68	73%	684	4.7%
Hutt Valley	Lower Hutt Central	19,478	42,213	46%	88	0.5%	80	91%	1,738	8.9%
Hutt Valley	Harbour	5,398	12,157	44%	40	0.7%	37	93%	684	12.7%
Hutt Valley	Wainuiomata	4,876	10,646	46%	19	0.4%	17	89%	386	7.9%
Hutt Valley District Health Board		44,366	90,338	49%	240	0.5%	202	84%	3,492	7.9%
Nelson Marlborough	Tasman	11,195	19,447	58%	53	0.5%	41	77%	1,027	9.2%
Nelson Marlborough	Richmond	5,502	9,330	59%	29	0.5%	21	72%	229	4.2%
Nelson Marlborough	Nelson	16,058	30,416	53%	241	1.5%	163	68%	1,357	8.5%
Nelson Marlborough	Marlborough	8,229	12,653	65%	47	0.6%	28	60%	407	4.9%
Nelson Marlborough	Blenheim	11,190	16,744	67%	61	0.5%	36	59%	523	4.7%
Nelson Marlborough District Health Board		52,174	88,590	59%	431	0.8%	289	67%	3,543	6.8%
West Coast	Buller	4,972	6,921	72%	46	0.9%	43	93%	195	3.9%
West Coast	Grey	6,148	9,869	62%	29	0.5%	29	100%	117	1.9%
West Coast	Westland	3,998	5,807	69%	37	0.9%	16	43%	156	3.9%
West Coast District Health Board		15,118	22,597	67%	112	0.7%	88	79%	468	3.1%
Canterbury	North Canterbury	22,054	35,899	61%	147	0.7%	86	59%	1,825	8.3%
Canterbury	Christchurch	111,145	227,793	49%	1,153	1.0%	531	46%	9,528	8.6%

Table 10.8: District Health Board Elections 2001 (continued)

DHB	CONSTITUENCY	VOTING, ELECTORS & TURNOUT			SPECIAL VOTES				INFORMAL VOTES	
		Resident Voters (N)	Resident Electors (N)	Turnout (%)	Special Votes Cast (N)	Special Votes (%)	Special		Informal Votes (N)	Informal Votes (%)
							Votes Allowed (N)	Special Votes (%)		
Canterbury	Mid-Canterbury	25,679	44,370	58%			No Count		1,789	7.0%
Canterbury District Health Board		158,878	308,062	52%	1,300	0.8%	617	47%	13,142	8.3%
South Canterbury	Timaru	13,941	21,868	64%	34	0.2%	22	65%	221	1.6%
South Canterbury	Temuka-Pleasant Point	4,050	4,374	93%	10	0.2%	9	90%	117	2.9%
South Canterbury	MacKenzie-Geraldine	4,035	6,074	66%	24	0.6%	13	54%	229	5.7%
South Canterbury	Waimate	4,005	5,397	74%	37	0.9%	24	65%	75	1.9%
South Canterbury District Health Board		26,031	37,713	69%	105	0.4%	68	65%	642	2.5%
Otago	Waitaki	10,522	15,311	69%	77	0.7%	65	84%	402	3.8%
Otago	Central Otago	9,623	14,480	66%	203	2.1%	87	43%	95	1.0%
Otago	Clutha	7,675	12,379	62%	26	0.3%	16	62%	215	2.8%
Otago	Dunedin North	20,083	39,978	50%	184	0.9%	153	83%	1,113	5.5%
Otago	Dunedin South	26,828	43,856	61%	140	0.5%	115	82%	1,507	5.6%
Otago District Health Board		74,731	126,004	59%	630	0.8%	436	69%	3,332	4.5%
Southland	Queenstown-Lakes	Elected unopposed	7,882	Elected unopposed			Elected Unopposed		Elected Unopposed	
Southland	Southland	10,196	20,282	50%			No Count		390	3.8%
Southland	Gore	3,439	8,985	38%	20	0.6%	17	85%	2	0.1%
Southland	Invercargill	18,754	36,194	52%			No Count		762	4.1%
Southland District Health Board		32,389	73,343	49%	20	0.1%	17	85%	1,154	3.6%

**Table 10.8: District Health Board Elections 2001 (continued)**

DHB	CONSTITUENCY	VOTING, ELECTORS & TURNOUT			SPECIAL VOTES				INFORMAL VOTES	
		Resident Voters (N)	Resident Electors (N)	Turnout (%)	Special Votes Cast (N)	Special Votes (%)	Special Votes Allowed (N)	Special Votes (%)	Informal Votes (N)	Informal Votes (%)
North Island DHBs		905,990	1,906,410	<b>48%</b>	6,991	<b>0.8%</b>	5,355	<b>73%</b>	48,889	<b>5.4%</b>
South Island DHBs		359,321	656,309	<b>55%</b>	2,598	<b>0.7%</b>	1,515	<b>58%</b>	22,281	<b>6.2%</b>
Large DHBs		862,172	1,825,019	<b>47%</b>	7,013	<b>0.8%</b>	4,928	<b>66%</b>	54,332	<b>6.3%</b>
Small DHBs		403,139	737,700	<b>56%</b>	2,576	<b>0.7%</b>	1,942	<b>75%</b>	16,838	<b>4.2%</b>
New Zealand District Health Boards		1,265,311	2,562,719	<b>50%</b>	9,589	<b>0.8%</b>	6,870	<b>69%</b>	71,170	<b>5.6%</b>

## Section 11: City Council elections

This section provides information about candidates, mayors, councillors and voting patterns for each of the 15 city councils. Brief notes are followed by Table 11.11 listing individual city councils.

### Positions and candidates

The 2001 election attracted less candidates for election to a city council compared to anytime since local government was reconstituted in 1989, as measured by the number of candidates (Table 11.1). There were 119 less candidates standing for election compared to 1998. An important factor was that there were also less positions to be filled in 2001 - the lowest level since 1989.

**Table 11.1: City council candidate numbers, 1989 - 2001**

Positions	1989	1992	1995	1998	2001
Positions on councils	246	247	239	223	221
Candidates	778	677	636	712	593
Candidates per position	3.2	2.7	2.7	3.2	2.7
Elected unopposed	0	5	1	0	5
Mayoral candidates	71	72	98	116	86
Mayoral candidates per position	5.1	4.8	6.5	7.7	5.7
Mayors elected unopposed	1	0	0	0	2

### Contests

There were 5 positions that were elected unopposed on councils and 2 mayoralties that were also uncontested. Elections were conducted at large in four of the smaller cities: Napier, Upper Hutt, Nelson and Invercargill. Remaining cities were divided into a total of 64 wards.

**Table 11.2: Contested city council wards 1989 - 2001**

Contests	1989	1992	1995	1998	2001
Wards	N/A	83	82	68	68
Contested wards	N/A	79	81	68	63
Contested Mayoralties	13/14	14/15	15/15	15/15	13/15

*N/A - not available*

### Sitting councillors and mayors re-elected

More than two of every three councillors elected in 2001 (Table 11.3) had been sitting members of the previous city council – the highest level since councils were reconstituted in 1989. All 5 councillors elected unopposed were sitting members of the previous council. Sitting members comprised just 30% of candidates yet were more likely to be successful than other candidates. The proportion of sitting members to candidates compares to 27% in 1998.

Sitting mayors were slightly more successful than in the previous election (Table 11.3). Twelve sitting mayors stood for re-election, nine were elected and three defeated, while three new mayors were elected in cities where the previous mayor did not stand. The two mayoral candidates elected unopposed were both incumbent (sitting) mayors. Three of the six new mayors were sitting councillors in the previous term.

**Table 11.3: Sitting members of city councils re-elected, 1989 - 2001**

	1989	1992	1995	1998	2001
Councillors re-elected	*	58%	68%	63%	69%
Mayors re-elected	*	11/11	10/13	7/12	9/12

\* Because all councils were re-constituted in 1989 there were no 'sitting members'

### Experience of Community Board

In 2001, 12% of city council *candidates* from city councils (with community boards) had been elected onto a community board in 1998. Almost 14% of *councillors* had been elected onto a community board in 1998.

### Election of women

Women's representation has reached a new height, with women holding around 39% of all positions on city councils (Table 11.4). Women continue to make up just over a quarter of city mayors, similar to the past four elections. All four women mayors stood for re-election in 2001, one of whom was elected unopposed, while another was re-elected. The remaining two incumbents were not re-elected. However, two new women mayors were elected.

All cities had at least two women on council; the greatest proportions were in Waitakere (64%) and Christchurch (58%) and Invercargill again had the lowest proportion (17%), the same proportion as in the 1998 election.

**Table 11.4: Representation of women in city council elections, 1989 - 2001**

	1989	1992	1995	1998	2001
Women candidates	219	206	219	229	195
Candidates who are women	28%	30%	34%	32%	33%
Women councillors	87	87	80	81	86
Councillors who are women	36%	35%	33%	36%	39%
Women mayoral candidates	16	19	24	34	19
Mayoral candidates who are women	23%	26%	24%	29%	22%
Women mayors	4	4	3	4	4
Mayors who are women	29%	27%	20%	27%	27%

### Electors

There was a continued increase in the number of electors on residential rolls contrasted by a continued decline in the number who registered on the ratepayer roll in 2001. Ratepayer electors make up less than 0.2% of all electors in cities.

**Table 11.5: Number of electors on the roll in city councils, 1989 - 2001**

Electors	1989	1992	1995	1998	2001
Residential electors	1.183m	1.263m	1.335m	1.405m	1.463m
Percentage change		6.8%	5.7%	5.2%	4.1%
Ratepayer electors	*	6,080	3,460	2,724	2,518
Electors with ratepayer franchise	*	0.48%	0.26%	0.19%	0.17%
Percentage change			-43.1%	-21.3%	-7.6%

\* There were no ratepayer franchise in 1989

## Representation

On average, each city councillor represented 6,622 electors following the 2001 elections. Average representation varies between cities from 13,352 electors per councillor in Auckland and 9,503 per councillor in Christchurch to 2,299 per councillor in Porirua.

**Table 11.6: Average electors per councillor on city councils, 1989 - 2001**

Representation	1989	1992	1995	1998	2001
Electors per councillors	4,809	5,136	5,601	6,315	6,622

## Voter turnout

Overall, the average turnout in city council elections was 45%, lower than all previous elections since 1989 (Table 11.7). Average overall turnout in the smaller cities was 51%, compared to 44% in the larger cities, and 51% in South Island cities compared to 43% in North Island cities.

Compared to the previous election in 1998, turnout has dropped for all of these except for Upper Hutt which rose one percentage point.

Turnout among ratepayer electors was generally higher than among resident electors, with an average of 86%, and was the highest on record since 1989.

Palmerston North recorded a ratepayer turnout greater than 100%; this is explained by taking into account ratepayers who had cast special votes but were not on the ratepayer roll. The numbers involved were not large.

Turnout in mayoral elections were higher amongst the smaller city councils and South Island city councils.

**Table 11.7: Average city council voter turnout, 1989 – 2001**

Turnout	1989	1992	1995	1998	2001
Average council turnout	52%	48%	49%	51%	45%
Average ratepayer turnout	*	63%	65%	71%	86%
Average mayoral turnout	50%	48%	49%	51%	45%

\* There were no ratepayer franchise in 1989

### Resident and ratepayer electors who voted

The number of resident electors who voted in city council and mayoral elections was lower in 2001 compared to 1998 (Table 11.8). However, the number of ratepayer electors who voted in council elections was the highest since 1992.

The decline in the number of resident electors who voted between 1998 and 2001 was in contrast to the number of electors on the roll, which increased slightly during this period (Table 11.5). The combination of these two factors contributed to the dramatic decline in turnout (Table 11.7).

**Table 11.8: Electors who voted in city council elections, 1989-2001**

Electors who voted	1989	1992	1995	1998	2001
Resident electors who voted	614,755	N/A	657,976	717,064	645,445
Ratepayer electors who voted	*	N/A	1,197	1,135	2,019
Electors who voted in mayoral elections	586,898	589,040	660,513	718,161	627,472

\* Ratepayer franchise was not available in 1989

N/A Not available

### Special votes

More special votes were cast in city council elections in 2001 than in all elections since 1989 (Table 11.9). However, special votes amounted to less than 1% of the total number of votes cast.

Over 80% of all special votes were allowed; proportions allowed ranged from 69% of special votes in Auckland to 100% in Waitakere, Hamilton, Christchurch and Invercargill.

**Table 11.9: Special votes in city council elections, 1989 – 2001**

Special votes	1989	1992	1995	1998	2001
Special votes cast	6,087	5,501	5,591	5,877	6,124
Proportion of total votes	1.0%	0.9%	0.8%	0.8%	0.9%
Special votes allowed	61%	71%	73%	68%	83%

### Informal votes

Informal votes comprised 2.6% of the overall total votes in city council elections in 2001 (Table 11.10). There were more informal votes recorded in the larger and South Island cities. Unlike previous elections, there were more informal votes for mayor than informal votes for council.

**Table 11.10: Informal votes in city council elections, 1989 – 2001**

Informal votes	1989	1992	1995	1998	2001
Informal council votes	22,673	23,699	20,142	31,024	17,699
Proportion of total votes	3.7%	3.8%	3%	4.3%	2.6%
Informal mayoral votes	16,077	12,183	8,238	13,214	17,994
Proportion of total mayoral votes	2.7%	2.1%	1.2%	1.8%	2.9%

**Table 11.11: City Council Elections 2001**

CITY	MEMBERS AND CANDIDATES				SITTING MEMBERS RE-ELECTED				ELECTION OF WOMEN				Representation Electors per councillor (N)
	Council positions (N)	Council candidates (N)	Candidates		Candidates sitting members (N)	Candidates sitting members (%)	Councillors sitting members (N)	Councillors sitting members (%)	Women candidates (N)	Candidates women (%)	Women councillors (N)	Councillors women (%)	
			per position (N)	Contested wards (N)									
North Shore	15	51	3.4	3/3 wards	12	24%	10	67%	17	33%	7	47%	8,717
Waitakere	14	46	3.3	4/4 wards	12	26%	6	43%	20	43%	9	64%	7,818
Auckland	19	63	3.3	7/7 wards	12	19%	10	53%	25	40%	8	42%	13,352
Manukau	19	58	3.1	6/7 wards	16	28%	14	74%	14	24%	4	21%	9,451
Hamilton	13	40	3.1	3/3 wards	9	23%	8	62%	11	28%	3	23%	6,052
Napier	12	29	2.4	At Large	9	31%	8	67%	6	21%	4	33%	3,216
Palmerston North	14	40	2.9	5/6 wards	11	28%	8	57%	13	33%	4	29%	3,641
Porirua	13	22	1.7	3/3 wards	12	55%	10	77%	10	45%	6	46%	2,299
Upper Hutt	10	19	1.9	At Large	6	32%	6	60%	7	37%	4	40%	2,535
Lower Hutt	11	27	2.5	6/6 wards	10	37%	9	82%	11	41%	5	45%	5,916
Wellington	19	56	2.9	6/6 wards	14	25%	14	74%	16	29%	8	42%	6,460
Nelson	12	29	2.4	At Large	8	28%	8	67%	9	31%	5	42%	2,539
Christchurch	24	58	2.4	12/12 wards	22	38%	18	75%	23	40%	14	58%	9,503
Dunedin	14	21	1.5	4/7 wards	13	62%	13	93%	4	19%	3	21%	5,997
Invercargill	12	34	2.8	At Large	10	29%	10	83%	9	26%	2	17%	3,011
North Island	159	451	2.8	45/47 wards	123	27%	103	65%	150	33%	62	39%	6,822
South Island	62	142	2.3	18/21 wards	53	37%	49	79%	45	32%	24	39%	6,107
Larger cities	137	393	2.9	45/49 wards	110	28%	93	68%	130	33%	56	41%	8,664
Smaller cities	84	200	2.4	18/19 wards	66	33%	59	70%	65	33%	30	36%	3,291
NEW ZEALAND CITIES	221	593	2.7	63/68 wards	176	30%	152	69%	195	33%	86	39%	6,622

Table 11.11: City Council Elections 2001 (cont)

CITY	ELECTORS (ALL WARDS)				VOTING AND TURNOUT (CONTESTED WARDS)						MAYORAL TURNOUT	
	Resident electors	Ratepayer electors	Ratepayer electors	Total electors	Resident voters	Resident turnout	Ratepayer voters	Ratepayer turnout	Total votes	Overall turnout	Mayoral voters	Mayoral turnout
	(N)	(N)	(%)	(N)	(N)	(%)	(N)	(%)	(N)	(%)	(N)	(%)
North Shore	130,638	120	0.09%	130,758	49,418	38%	Counted with residents		49,418	38%	49,574	38%
Waitakere	109,274	176	0.16%	109,450	41,438	38%	130	74%	41,614	38%	41,548	38%
Auckland	252,641	1,040	0.41%	253,681	108,817	43%	886	85%	109,703	43%	108,814	43%
Manukau	179,415	148	0.08%	179,563	62,809	37%	90	80%	62,899	37%	65,766	37%
Hamilton	78,489	185	0.24%	78,674	36,920	47%	184	99%	37,104	47%	37,104	47%
Napier	38,364	55	0.14%	38,419	21,443	56%	43	78%	21,486	56%	21,486	56%
Palmerston North#	50,892	75	0.15%	50,967	24,381	50%	90	122%	24,471	50%	25,573	50%
Porirua	29,856	33	0.11%	29,889	12,784	43%	23	70%	12,807	43%	No election	
Upper Hutt	25,322	31	0.12%	25,353	14,592	58%	22	71%	14,614	58%	14,614	58%
Lower Hutt	65,017	54	0.08%	65,071	29,772	46%	Counted with residents		29,772	46%	29,772	46%
Wellington	122,476	256	0.21%	122,732	58,417	48%	225	88%	58,642	48%	58,642	48%
Nelson	30,416	53	0.17%	30,469	16,059	53%	Counted with residents		16,059	53%	16,050	53%
Christchurch	227,793	289	0.13%	228,082	111,139	49%	253	88%	111,392	49%	111,392	49%
Dunedin	83,872	88	0.10%	83,960	36,243	54%	41	73%	36,284	54%	47,137	56%
Invercargill	36,091	35	0.10%	36,126	21,213	59%	32	91%	21,245	59%	No election	
North Island	1,082,384	2,173	0.20%	1,084,557	460,791	43%	1,693	86%	462,484	43%	452,893	42%
South Island	378,172	465	0.12%	378,637	184,654	51%	326	86%	184,980	51%	174,579	51%
Larger cities	1,184,598	2,302	0.19%	1,186,900	505,201	44%	1,809	86%	507,010	44%	519,977	44%
Smaller cities	275,958	336	0.12%	276,294	140,244	51%	210	92%	140,454	51%	107,495	51%
NEW ZEALAND CITIES	1,460,556	2,638	0.18%	1,463,194	645,445	45%	2,019	86%	647,464	45%	627,472	45%

Counted with residents - ratepayer votes were not supplied by ward, but were included with resident voters

# - Ratepayer turnout was greater than 100% because of special votes cast by ratepayers not on the ratepayer roll prior to the closing of the roll

^ - No mayoral election was held as the mayor was re-elected unopposed

**Table 11.11: City Council Elections 2001 (cont)**

CITY	MAYORAL CONTEST					SPECIAL VOTES				INFORMAL VOTES			
	Sitting Mayor* (U/R/D/S)	Mayoral candidates (N)	Mayor (Sex)	Women candidates (N)	Women candidates (%)	Special votes cast (N)	Resident special votes allowed (N)	Ratepayer special votes allowed (N)	Special votes allowed (%)	Informal votes for mayor (N)	Informal votes for mayor (%)	Informal votes for council (N)	Informal council votes (%)
	North Shore	RE-ELECTED	5	Male	1	20%	257	227	0	88%	1,254	2.5%	1,169
Waitakere	RE-ELECTED	5	Male	1	20%	459	459	0	100%	2,334	5.6%	1,285	3.1%
Auckland	DEFEATED	10	Male	3	30%	1,496	964	70	69%	203	0.2%	211	0.2%
Manukau	RE-ELECTED	6	Male	0	0%	379	256	3	68%	3,583	5.4%	1,692	2.7%
Hamilton	DEFEATED	8	Male	1	13%	250	235	15	100%	874	2.4%	1,081	2.9%
Napier	STOOD DOWN	2	Female	1	50%	181	129	0	71%	2,187	10.2%	243	1.1%
Palmerston North	DEFEATED	4	Male	1	25%	303	262	28	96%	637	2.5%	523	2.1%
Porirua	UNOPPOSED	1	Female	1	100%	179	129	2	73%	No election		134	1.0%
Upper Hutt	STOOD DOWN	4	Male	2	50%	93	65	3	73%	128	0.9%	193	1.3%
Lower Hutt	RE-ELECTED	2	Male	0	0%	182	127	10	75%	2,884	9.7%	764	2.6%
Wellington	STOOD DOWN	14	Female	5	36%	1,123	914	22	83%	874	1.5%	3,026	5.2%
Nelson	RE-ELECTED	3	Male	0	0%	189	163	0	86%	600	3.7%	207	1.3%
Christchurch	RE-ELECTED	14	Male	2	14%	572	531	41	100%	2,050	1.8%	5,049	4.5%
Dunedin	RE-ELECTED	7	Female	1	14%	331	268	3	82%	386	0.8%	1,218	3.4%
Invercargill	UNOPPOSED	1	Male	0	0%	130	120	10	100%	No election		139	0.7%
North Island	1U/3D/4R/3S	61	3F/8M	16	26%	4,902	3,767	153	80%	14,958	3.3%	10,321	2.2%
South Island	1U/0D/3R/0S	25	1F/3M	3	12%	1,222	1,082	54	93%	3,036	1.7%	6,613	3.6%
Larger cities	0U/2D/5R/1S	69	2F/6M	14	20%	4,867	3,854	154	82%	11,558	2.2%	14,731	2.9%
Smaller cities	2U/1D/2R/2S	17	2F/5M	5	29%	1,257	995	53	83%	6,436	6.0%	2,203	1.6%
NEW ZEALAND CITIES	2U/3D/7R/3S	86	4F/11M	19	22%	6,124	4,849	207	83%	17,994	2.9%	16,934	2.6%

(\*) = Unopposed (U), Re-elected (R), Defeated (D), Stood Down (S)

## Section 12 : District Council Elections

This section provides information about candidates, mayors, councillors and voting patterns for each of the 59 district councils<sup>9</sup>, including those that are unitary authorities and the Chatham Islands Council. Brief notes are followed by Table 12.1 that gives more detailed results for each individual council.

### Positions and candidates

Interest in standing for election to district councils was lower in 2001 than at any time since in 1989, as measured by the number of candidates (Table 12.1). Compared to the previous election, there were 180 less candidates and 28 less positions (12% less candidates for 4% less positions).

**Table 12.1: District council candidate numbers, 1989 - 2001**

Positions	1989	1992	1995	1998	2001
Council positions	769	705	684	668	640
Candidates	1,742	1,354	1,313	1,445	1,265
Candidates per position	2.3	1.9	1.9	2.2	2.0
Elected unopposed	63	105	98	77	110
Mayoral candidates	194	161	193	232	217
Mayoral candidates per position	3.3	2.7	3.3	3.9	3.7
Mayors elected unopposed	7	17	11	2	6

<sup>9</sup> Includes Rodney District Council – where elections were held earlier in the year (April 2001)

### Contests

Compared to previous elections, there were fewer contests and a lower number of wards in 2001 (Table 12.2). Elections were again conducted *at large* for three districts, Kawerau, Kaikoura and Chatham Islands (each of which is counted here as one ward.) All but seven mayoralties were contested. Those districts where the mayoralty was uncontested were: Kaipara, Otorohanga, Stratford, Tararua, Grey and Southland. No elections were held in Rodney because elections were held prior to the main election, on April 2001.

**Table 12.2: Contested district council wards 1989 - 2001**

Contests	1989	1992	1995	1998	2001
Wards	^	306	288	271	257
Wards contested	^	236	209	215	185
Contested mayoralty	51/58	42/59	48/59	57/59	52/58

*Note: In 1989 Chatham Islands Council did not elect a mayor, and details of voting by wards were not kept. Invercargill was defined as a district in 1989 and a city since 1992*

<sup>^</sup> Information not available

### Sitting members/mayors re-elected

Well over half those elected were sitting members of the previous council, in line with the pattern over recent elections (Table 12.3). Sitting members were considerably more likely to be elected than newcomers.

**Table 12.3: District council members re-elected, 1989 - 2001**

Sitting members	1989	1992	1995	1998	2001
Councillors re-elected	*	61%	64%	62%	63%
Mayors re-elected	*	43/60	39/59	40/59	32/58

\* Because all councils were re-constituted in 1989 there were no 'sitting members'

Sitting mayors were more successful than other mayoral candidates in 2001. Of the 41 district mayors who stood for re-election, 8 were defeated, 27 were re-elected and six were elected unopposed. Of the 8 candidates who defeated sitting mayors, 3 had been members of the previous council. Of the 17 districts where the previous mayor did not stand again, ten of the new mayors had been members of the previous council. Rodney was not counted as the mayor was carried over from the April election.

### Community Board experience

Membership of a community board appears to serve as the springboard to election for a district council. In 2001, 11% of candidates and 16% of councillors had, in the previous term, been members of a community board. In 1998, the corresponding proportions were 7% of candidates and 10% of members.

### Election of women

The proportion of women candidates increased to their highest proportion since 1989 (Table 12.4). Less women were elected as councillors in 2001 compared to the previous three elections. Due to the lesser number of positions being contested.

**Table 12.4: Representation of women in district council elections, 1989 - 2001**

Women	1989	1992	1995	1998	2001
Women candidates	295	292	318	367	330
Women candidates	17%	22%	24%	25%	26%
Women elected	149	164	178	178	168
Women councillors	19%	23%	26%	27%	26%
Women mayoral candidates	22	31	31	38	49
Women mayoral candidates	11%	19%	16%	16%	22%
Women mayors	6	9	12	15	8

In contrast to previous years, there was a slightly lower proportion of women on councils in the larger districts. Women make up half of the council in Papakura, Otorohanga and the Chatham Islands. Every district council except Waimate and Stratford has at least one woman on council.

The number of women mayoral candidates reached a new high in 2001, but despite this the number of women elected was lower than in the previous two elections.

### Electors

There was a slight decrease in the number of resident electors enrolled in 2001 due to the exclusion of Rodney district which did not have an election (Table 12.5). There was also a slight decrease in the number of electors who registered on the ratepayer roll, although not enough to increase the proportion of ratepayer electors compared to 1998.

**Table 12.5: Number of electors on the roll in district councils, 1989 - 2001**

Electors	1989	1992	1995	1998	2001 <sup>a</sup>
Residential electors on roll	1.003m	0.998m	1.068m	1.103m	1.077m
Ratepayer electors on roll	*	16,180	10,536	8,699	8,340
Proportion on ratepayer roll	*	1.59%	0.98%	0.78%	0.77%

\* There was no ratepayer franchise in 1989

Districts with significant proportions of ratepayer electors tended to be in resort and holiday areas, the proportions were higher in small districts and in the South Island. Three of the five districts with the highest proportions of ratepayer electors had increases in the proportion of ratepayer electors between 1998 and 2001. These were:

- Queenstown-Lakes (9.7%, up from 7.7% in 1998)
- Banks Peninsula (6.2%, up from 5.6% in 1998)
- Thames-Coromandel (6.0%, slightly up from 5.9% in 1998)

By contrast, Mackenzie (4.5%, down from 5.0% in 1998), and Taupo (4.2%, down from 4.7% in 1998) had declines in the proportion of ratepayer electors between 1998 and 2001.

### Representation

In 2001, the average district councillor represented fewer electors in 2001 compared to 1998 (Table 12.6). The average representation over the larger

districts was 2,389 electors per position (2,286 in 1998) and 775 across the smaller districts (1,034 in 1998), with 2,024 for North Island districts (1,930 in 1998) and 1,235 in South Island districts (1,177 in 1998).

**Table 12.6: Average electors per councillor on district councils, 1989 - 2001**

Representation	1989	1992	1995	1998	2001
Electors per district councillor (average)	1,304	1,481	1,577	1,664	1,696

### Voter turnout

Average voter turnout in contested wards for the election of councillors was the lowest since 1989 (Table 12.7). Average turnout for smaller districts was 65%, compared to 56% in larger districts; and 65% in South Island districts, compared to 55% in North Island districts.

Turnout in mayoral elections in most districts was similar to turnout in voting for council. However, in councils with some wards where there was no contest for council, mayoral turnout was lower, and these results influenced the overall average.

Turnout by ratepayer electors was higher than for resident electors, with an average of 81%. This was an increase compared to 1998. In several districts, more ratepayers voted than the number on the ratepayer roll, because ratepayers who were not on the roll had cast special votes.

**Table 12.7: District council voter turnout, 1989 - 2001**

Turnout	1989	1992	1995	1998	2001
Total turnout in council election	67%	61%	59%	61%	57%
Resident turnout					57%
Ratepayer turnout	none	72%	73%	79%	81%
Turnout in mayoral elections	67%	61%	59%	59%	56%
Mayoral resident turnout					56%
Mayoral ratepayer turnout					64%

### Resident and ratepayer electors who voted

The number of resident electors who voted in the 2001 elections was the lowest since 1989, while the number of ratepayers who voted was the highest on record (Table 12.8). The low resident elector turnout in 2001 (Table 12.7) was affected by both the decline in the number of resident electors who voted, and by the continued increase in the number of residents on the roll (Table 12.5).

**Table 12.8: Electors who voted in district council elections, 1989-2001**

Electors who voted	1989	1992	1995	1998	2001
Resident electors who voted	615,652	N/A	561,910	613,343	545,073
Ratepayer electors who voted	*	N/A	5,245	4,919	5,246
Electors who voted in mayoral elections	N/A	508,056	516,570	634,953	573,680

\* Ratepayer franchise was not available in 1989

N/A Not available

### Special votes

In 2001, there was a relatively large increase in the number of special votes cast compared to the previous election, although the overall number was considerably lower than 1989 (Table 12.9). However, the proportion of special votes still accounted for less than 1% of all votes cast. However, specials were 1% or over on average in the South Island, and smaller districts.

The majority of the special votes allowed were for resident electors, but in those districts with higher proportions of ratepayer electors more special votes were allowed to ratepayer voters. Five districts, Chatham Islands, Opotiki, Queenstown-Lakes, Waitomo and Banks Peninsula each had special votes amounting to 2% or more of the total vote, while in most other districts the proportion of special votes was less than 1%.

**Table 12.9: Special votes in district council elections, 1989 - 2001**

Special votes	1989	1992	1995	1998	2001
Special votes cast	6,488	4,958	4,560	4,178	5,097
Proportion of total votes cast	1.1%	0.9%	0.8%	0.7%	0.9%
Proportion of special votes allowed	73%	79%	78%	75%	78%

### Informal votes

There were substantially fewer informal council votes recorded in the 2001 elections compared to all elections since 1989 (Table 12.10).

The two districts with the greatest proportions of council informal votes were Kapiti Coast (1,049 votes representing 5.3% of the total votes for council) and Rangitikei (292 votes representing 5.0% of the total votes). Rangitikei also had the highest proportion of mayoral informal votes (465 votes representing 7.7% of the total votes for mayor).

**Table 12.10: Informal votes in district council elections, 1989 - 2001**

Informal Votes	1989	1992	1995	1998	2001
Council informal votes	11,602	10,705	11,992	11,037	9,454
Proportion of total votes	1.9%	1.9%	2.1%	1.8%	1.7%
Mayoral informal votes	14,172	12,110	11,244	13,929	9,708
Proportion of total mayoral votes	N/A	2.4%	2.2%	2.2%	1.7%

*N/A – not available*

**Table 12.11: District Council Elections 2001**

DISTRICT	MEMBERS AND CANDIDATES					SITTING MEMBERS RE-ELECTED				ELECTION OF WOMEN				Representation Electors per councillor (N)
	Council		Candidates			Candidates	Candidates	Councillors	Councillors	Women	Candidates	Women	Women on	
	Council	positions	Candidates	per	Contested	sitting	sitting	sitting	sitting	candidates	women	councillors	Women on	
	positions	unopposed	(N)	(N)	(N)	members	members	members	members	(N)	(%)	(N)	(%)	
Far North	10	0	24	2.4	3/3 wards	10	42%	8	80%	5	21%	3	30%	3,428
Whangarei	13	0	28	2.2	6/6 wards	9	32%	9	69%	8	29%	3	23%	3,698
Kaipara	10	3	25	2.5	3/4 wards	5	20%	5	50%	8	32%	2	20%	1,196
Papakura	8	0	20	2.5	4/4 wards	6	30%	5	63%	8	40%	4	50%	3,440
Franklin	14	6	22	1.6	3/6 wards	13	59%	13	93%	4	18%	3	21%	2,404
Thames- Coromandel	9	1	16	1.8	4/5 wards	4	25%	4	44%	6	38%	4	44%	2,238
Hauraki	13	4	22	1.7	2/3 wards	12	55%	12	92%	6	27%	4	31%	912
Waikato	13	6	28	2.2	5/11 wards	12	43%	10	77%	6	21%	2	15%	2,001
Matamata-Piako	11	0	22	2.0	3/3 wards	8	36%	7	64%	6	27%	3	27%	1,839
Waipa	12	2	24	2.0	4/5 wards	9	38%	8	67%	5	21%	3	25%	2,296
Otorohanga	6	3	8	1.3	2/6 wards	5	63%	4	67%	4	50%	3	50%	915
South Waikato	13	2	19	1.5	2/3 wards	12	63%	11	85%	8	42%	5	38%	1,183
Waitomo	10	6	15	1.5	1/7 wards	6	40%	5	50%	5	33%	4	40%	599
Taupo	11	0	35	3.2	3/4 wards	8	23%	6	55%	13	37%	5	45%	1,998
Western Bay of Plenty	13	0	30	2.3	5/5 wards	11	37%	7	54%	5	17%	2	15%	2,103
Tauranga	13	0	53	4.1	4/4 wards	10	19%	7	54%	13	25%	3	23%	4,985
Rotorua	12	0	24	2.0	4/4 wards	11	46%	10	83%	4	17%	2	17%	3,586
Whakatane	13	0	27	2.1	5/5 wards	14	52%	9	69%	5	19%	4	31%	1,644
Kawerau	7	0	14	2.0	At large	4	29%	4	57%	5	36%	2	29%	592
Opotiki	10	0	20	2.0	4/4 wards	6	30%	3	30%	3	15%	1	10%	555
Gisborne	14	1	39	2.8	6/7 wards	7	18%	7	50%	12	31%	4	29%	2,029
Wairoa	9	2	18	2.0	4/6 wards	5	28%	3	33%	5	28%	2	22%	633
Hastings	15	4	24	1.6	6/9 wards	12	50%	10	67%	9	38%	7	47%	3,006
Central Hawke's Bay	10	7	11	1.1	1/3 wards	8	73%	7	70%	1	9%	1	10%	858

Table 12.11: District Council Elections 2001 (cont)

DISTRICT	ELECTORS (ALL WARDS)				VOTES AND TURNOUT (CONTESTED WARDS ONLY)						MAYORAL TURNOUT	
	Resident electors	Ratepayer electors	Ratepayer electors	Total electors	Resident voters	Resident turnout	Ratepayer Voters	Ratepayer turnout	Total voters	Overall turnout	Mayoral voters	Mayoral turnout
	(N)	(N)	(%)	(N)	(N)	(%)	(N)	(%)	(N)	(%)	(N)	(N)
Far North	34,080	203	<b>0.59%</b>	34,283	16,335	<b>48%</b>	144	<b>71%</b>	16,479	<b>48%</b>	15,746	<b>46%</b>
Whangarei	47,959	118	<b>0.25%</b>	48,077	23,789	<b>50%</b>	84	<b>71%</b>	23,873	<b>50%</b>	23,965	<b>50%</b>
Kaipara	11,611	350	<b>2.93%</b>	11,961	5,275	<b>58%</b>	No count		5,275	<b>56%</b>	No election	
Papakura	27,462	55	<b>0.20%</b>	27,517	11,491	<b>42%</b>	45	<b>82%</b>	11,536	<b>42%</b>	11,384	<b>41%</b>
Franklin	33,561	99	<b>0.29%</b>	33,660	9,017	<b>49%</b>	No count		9,017	<b>49%</b>	15,422	<b>46%</b>
Thames- Coromandel	18,931	1,210	<b>6.01%</b>	20,141	10,127	<b>59%</b>	819	<b>87%</b>	10,946	<b>61%</b>	11,735	<b>58%</b>
Hauraki	11,801	56	<b>0.47%</b>	11,857	5,360	<b>63%</b>	32	<b>82%</b>	5,392	<b>63%</b>	7,149	<b>59%</b>
Waikato	25,934	82	<b>0.32%</b>	26,016	7,581	<b>51%</b>	30	<b>55%</b>	7,611	<b>51%</b>	12,260	<b>47%</b>
Matamata-Piako	20,201	29	<b>0.14%</b>	20,230	10,532	<b>52%</b>	23	<b>86%</b>	10,557	<b>52%</b>	10,555	<b>52%</b>
Waipa	27,529	27	<b>0.10%</b>	27,556	12,376	<b>50%</b>	21	<b>91%</b>	12,397	<b>50%</b>	13,585	<b>49%</b>
Otorohanga	5,455	33	<b>0.60%</b>	5,488	1,300	<b>51%</b>	8	<b>80%</b>	1,308	<b>51%</b>	No election	
South Waikato	15,325	55	<b>0.36%</b>	15,380	6,096	<b>44%</b>	No count		6,096	<b>44%</b>	6,731	<b>44%</b>
Waitomo	5,964	29	<b>0.48%</b>	5,993	1,661	<b>61%</b>	2	<b>100%</b>	1,663	<b>61%</b>	3,320	<b>55%</b>
Taupo	21,050	933	<b>4.24%</b>	21,983	12,039	<b>59%</b>	713	<b>77%</b>	12,752	<b>60%</b>	12,958	<b>59%</b>
Western Bay of Plenty	26,850	491	<b>1.80%</b>	27,341	13,270	<b>49%</b>	474	<b>97%</b>	13,744	<b>50%</b>	13,275	<b>48%</b>
Tauranga	64,680	127	<b>0.20%</b>	64,807	33,161	<b>51%</b>	No count		33,161	<b>51%</b>	33,220	<b>51%</b>
Rotorua	42,842	188	<b>0.44%</b>	43,030	20,788	<b>49%</b>	153	<b>81%</b>	20,941	<b>49%</b>	21,001	<b>49%</b>
Whakatane	21,311	58	<b>0.27%</b>	21,369	12,296	<b>58%</b>	46	<b>79%</b>	12,342	<b>58%</b>	12,293	<b>58%</b>
Kawerau	4,132	13	<b>0.31%</b>	4,145	2,335	<b>57%</b>	13	<b>100%</b>	2,348	<b>57%</b>	2,352	<b>57%</b>
Opotiki	5,499	46	<b>0.83%</b>	5,545	3,515	<b>64%</b>	No count		3,515	<b>63%</b>	3,626	<b>66%</b>
Gisborne	28,387	21	<b>0.07%</b>	28,408	16,972	<b>63%</b>	19	<b>112%</b>	16,991	<b>63%</b>	17,594	<b>62%</b>
Wairoa	5,607	91	<b>1.60%</b>	5,698	3,011	<b>66%</b>	20	<b>105%</b>	3,031	<b>67%</b>	3,723	<b>66%</b>
Hastings	45,040	49	<b>0.11%</b>	45,089	19,647	<b>55%</b>	No count		19,647	<b>55%</b>	22,957	<b>51%</b>
Central Hawke's Bay	8,564	18	<b>0.21%</b>	8,582	1,806	<b>63%</b>	3	<b>75%</b>	1,809	<b>63%</b>	5,391	<b>63%</b>

**Table 12.11: District Council Elections 2001 (cont)**

DISTRICT	MAYORAL CONTEST						SPECIAL VOTES				INFORMAL VOTES			
	Sitting mayor (R/S/U/D)	Mayor & council candidates (N)	Women mayoral candidates (Sex) (N)	Women mayoral candidates (%)	Special votes cast (N)	Resident special votes allowed (N)	Ratepayer special votes allowed (N)	All special votes allowed (%)	Informal mayoral votes (N)	Informal mayoral votes (%)	Informal votes for council (N)	Informal votes for council (%)		
Far North	RE-ELECTED	3	0	Female	1	33%	254	151	1	60%	537	3.5%	548	3.4%
Whangarei	RE-ELECTED	3	3	Male	0	0%	115	106	9	100%	644	2.8%	685	2.9%
Kaipara	UNOPPOSED	1	0	Male	0	0%	124	77	11	71%	No election		8	0.2%
Papakura	STOOD DOWN	6	1	Male	0	0%	56	28	2	54%	17	0.1%	8	0.1%
Franklin	RE-ELECTED	3	1	Female	2	67%	72	52	13	90%	31	0.2%	9	0.1%
Thames- Coromandel	RE-ELECTED	2	0	Male	1	50%	141	61	42	73%	5	0.0%	2	0.0%
Hauraki	RE-ELECTED	3	0	Male	1	33%	72	50	8	81%	106	1.5%	27	0.5%
Waikato	STOOD DOWN	8	6	Male	1	13%	62	45	4	79%	283	2.3%	180	2.4%
Matamata-Piako	RE-ELECTED	3	0	Male	1	33%	18	16	2	100%	265	2.6%	144	1.4%
Waipa	STOOD DOWN	3	2	Male	0	0%	101	74	9	82%	231	1.7%	278	2.2%
Otorohanga	UNOPPOSED	1	0	Male	0	0%	8	4	4	100%	No election		18	1.4%
South Waikato	RE-ELECTED	3	0	Male	1	33%	26	21	1	85%	131	2.0%	53	0.9%
Waitomo	STOOD DOWN	5	0	Male	1	20%	46	32	1	72%	48	1.4%	13	0.8%
Taupo	STOOD DOWN	7	3	Male	2	29%	135	93	12	78%	286	2.3%	252	2.1%
Western Bay of Plenty	STOOD DOWN	5	2	Male	0	0%	218	39	126	76%	41	0.3%	14	0.1%
Tauranga	STOOD DOWN	8	8	Female	1	13%	285	153	6	56%	636	2.0%	1,266	3.8%
Rotorua	RE-ELECTED	3	2	Male	0	0%	185	119	10	70%	681	3.3%	233	1.1%
Whakatane	RE-ELECTED	3	2	Male	1	33%	101	84	7	90%	267	2.2%	977	7.9%
Kawerau	STOOD DOWN	3	1	Male	1	33%	42	30	3	79%	16	0.7%	12	0.5%
Opotiki	STOOD DOWN	10	3	Male	0	0%	155	99	12	72%	21	0.6%	14	0.4%
Gisborne	STOOD DOWN	4	0	Male	0	0%	237	178	5	77%	275	1.6%	318	1.9%
Wairoa	DEFEATED	3	2	Male	0	0%	52	42	10	100%	11	0.3%	13	0.4%
Hastings	STOOD DOWN	3	3	Male	1	33%	133	0	0	0%	17	0.1%	3	0.0%
Central Hawke's Bay	DEFEATED	2	0	Male	0	0%	26	22	4	100%	-	0.0%	41	2.3%

Table 12.11: District Council Elections 2001 (continued)

DISTRICT	MEMBERS AND CANDIDATES					SITTING MEMBERS RE-ELECTED				ELECTION OF WOMEN				Representation Electors per councillor (N)
	Council positions	Council positions	Candidates	per Contested		Candidates	Candidates	Councillors	Councillors	Women	Women	Women	Women	
	unopposed	unopposed	per position	wards		sitting	sitting	sitting	sitting	council	council	Women	Women	
	(N)	(N)	(N)	(N)	(N)	(N)	(%)	(N)	(%)	(N)	(%)	(N)	(%)	
New Plymouth	16	1	51	3.2	4/5 wards	11	22%	7	44%	16	31%	6	38%	3,039
Stratford	10	2	16	1.6	3/4 wards	9	56%	8	80%	2	13%	0	0%	613
South Taranaki	12	4	22	1.8	3/5 wards	9	41%	7	58%	5	23%	4	33%	1,538
Ruapehu	11	2	29	2.6	3/5 wards	10	34%	8	73%	7	24%	2	18%	832
Wanganui	12	0	36	3.0	2/2 wards	12	33%	8	67%	10	28%	4	33%	2,500
Rangitikei	11	2	17	1.5	3/4 wards	7	41%	6	55%	5	29%	3	27%	95
Manawatu	11	0	20	1.8	3/3 wards	7	35%	7	64%	4	20%	3	27%	1,763
Tararua	8	0	16	2.0	3/3 wards	5	31%	3	38%	4	25%	2	25%	1,520
Horowhenua	9	0	19	2.1	4/4 wards	8	42%	7	78%	7	37%	2	22%	2,293
Kapiti Coast	14	0	29	2.1	4/4 wards	11	38%	11	79%	7	24%	4	29%	2,258
Masterton	10	0	24	2.4	3/3 wards	9	38%	7	70%	8	33%	1	10%	1,939
Carterton	8	0	13	1.6	2/2 wards	5	38%	5	63%	4	31%	3	38%	628
South Wairarapa	9	3	14	1.6	2/3 wards	6	43%	6	67%	5	36%	3	33%	700
Tasman	13	2	20	1.5	4/5 wards	12	60%	11	85%	4	20%	2	15%	2,229
Marlborough	12	0	33	2.8	4/5 wards	10	30%	7	58%	10	30%	3	25%	2,468
Kaikoura	7	0	13	1.9	At large	5	38%	5	71%	2	15%	2	29%	349
Buller	11	0	26	2.4	3/3 wards	9	35%	7	64%	4	15%	2	18%	635
Grey	8	1	14	1.8	3/4 wards	6	43%	5	63%	3	21%	1	13%	1,240
Westland	12	0	19	1.6	3/3 wards	10	53%	10	83%	4	21%	2	17%	448
Hurunui	9	2	14	1.6	4/6 wards	4	29%	3	33%	4	29%	4	44%	909
Waimakariri	15	0	25	1.7	4/4 wards	6	24%	3	20%	6	24%	3	20%	1,770
Banks Peninsula	7	1	9	1.3	2/3 wards	6	67%	5	71%	2	22%	2	29%	911
Selwyn	11	3	18	1.6	3/4 wards	12	67%	11	100%	5	28%	3	27%	1,769
Ashburton	12	2	16	1.3	2/3 wards	9	56%	8	67%	3	19%	3	25%	1,585
Timaru	12	1	17	1.4	2/4 wards	10	59%	9	75%	3	18%	3	25%	2,638

**Table 12.11: District Council Elections 2001 (continued)**

DISTRICT	ELECTORS (ALL WARDS)				VOTES AND TURNOUT (CONTESTED WARDS ONLY)						MAYORAL TURNOUT	
	Resident electors on roll		Ratepayer electors	Total electors on both rolls	Resident electors voters	Average resident turnout	Ratepayer electors voters	Average ratepayer turnout	Total votes (contested wards)	Overall average turnout	Total votes in mayoral election	Average mayoral turnout
	(N)	(N)	(%)	(N)	(N)	(%)	(N)	(%)	(N)	(%)	(N)	(%)
New Plymouth	48,580	40	0.08%	48,620	28,495	61%	36	133%	28,531	61%	29,532	61%
Stratford	6,106	21	0.34%	6,127	3,033	60%	20	100%	3,053	60%	No election	
South Taranaki	18,445	14	0.08%	18,459	8,021	61%	11	100%	8,032	61%	11,201	61%
Ruapehu	9,063	87	0.95%	9,150	4,479	62%	45	70%	4,524	62%	5,081	56%
Wanganui	29,943	52	0.17%	29,995	19,510	65%	47	90%	19,557	65%	19,530	65%
Rangitikei	10,437	24	0.23%	10,461	5,806	61%	21	95%	5,827	61%	5,806	56%
Manawatu	19,355	33	0.17%	19,388	9,979	52%	26	79%	10,005	52%	10,005	52%
Taranua	12,149	12	0.10%	12,161	6,912	57%	10	83%	6,922	57%	No election	
Horowhenua	20,597	42	0.20%	20,639	12,760	62%	36	86%	12,796	62%	12,599	61%
Kapiti Coast	31,231	380	1.20%	31,611	19,699	63%	243	64%	19,942	63%	19,819	63%
Masterton	19,355	33	0.17%	19,388	9,979	52%	26	79%	10,005	51%	9,842	61%
Carterton	4,996	24	0.48%	5,020	3,317	66%	24	100%	3,341	67%	3,371	67%
South Wairarapa	6,276	28	0.44%	6,304	2,852	64%	7	78%	2,859	64%	4,093	65%
Tasman	28,777	197	0.68%	28,974	15,909	58%	142	88%	16,051	59%	16,990	59%
Marlborough	29,397	213	0.72%	29,610	18,748	66%	162	77%	18,910	66%	19,519	66%
Kaikoura	2,411	35	1.43%	2,446	1,735	72%	29	83%	1,764	72%	1,764	72%
Buller	6,921	63	0.90%	6,984	4,972	72%	67	106%	5,039	72%	5,005	72%
Grey	9,870	48	0.48%	9,918	5,351	63%	33	79%	5,384	63%	No election	
Westland	5,331	44	0.82%	5,375	3,992	75%	19	43%	4,011	75%	4,011	69%
Hurunui	8,006	172	2.10%	8,178	3,816	59%	No count		3,816	58%	4,911	68%
Waimakariri	26,516	34	0.13%	26,550	15,575	59%	31	91%	15,606	59%	15,668	59%
Banks Peninsula	5,976	398	6.24%	6,374	3,802	72%	308	81%	4,110	73%	4,452	70%
Selwyn	19,386	74	0.38%	19,460	7,566	57%	50	77%	7,616	57%	10,017	52%
Ashburton	19,014	6	0.03%	19,020	10,271	65%	No count		10,271	65%	12,264	64%
Timaru	31,627	33	0.10%	31,660	16,169	64%	27	93%	16,196	64%	20,252	64%

Table 12.11: District Council Elections 2001 (continued)

DISTRICT	MAYORAL CONTEST						SPECIAL VOTES				INFORMAL VOTES			
	Sitting mayor (R/S/U/D)	Mayoral candidates (N)	Mayor & council		Women mayoral	Women mayoral	Special votes cast	Resident special votes allowed	Ratepayer special votes allowed	All special votes allowed	Informal mayoral votes	Informal mayoral votes	Informal votes for council	Informal votes for council
			(N)	(Sex)	(N)	(%)	(N)	(N)	(N)	(%)	(N)	(%)	(N)	(%)
New Plymouth	STOOD DOWN	8	6	Male	3	38%	188	111	18	69%	466	1.6%	364	1.3%
Stratford	UNOPPOSED	1	0	Male	0	0%	22	19	2	95%	No election		0	0.0%
South Taranaki	RE-ELECTED	3	3	Female	2	67%	62	30	0	48%	147	1.3%	145	1.8%
Ruapehu	DEFEATED	2	1	Female	1	50%	46	41	5	100%	153	3.1%	75	1.7%
Wanganui	RE-ELECTED	8	4	Male	1	13%	176	150	3	87%	279	1.5%	288	1.5%
Rangitikei	DEFEATED	2	1	Male	0	0%	38	31	2	87%	465	7.7%	292	5.0%
Manawatu	RE-ELECTED	2	1	Female	1	50%	35	32	2	97%	232	2.4%	128	1.3%
Tararua	UNOPPOSED	1	0	Female	1	100%	24	15	6	88%	No election		72	1.0%
Horowhenua	RE-ELECTED	3	1	Male	0	0%	65	38	10	74%	435	3.5%	336	2.6%
Kapiti Coast	DEFEATED	6	3	Male	2	33%	162	112	50	100%	599	3.1%	1,049	5.3%
Masterton	RE-ELECTED	2	1	Male	1	50%	93	61	18	85%	356	3.8%	139	0.7%
Carterton	RE-ELECTED	4	1	Male	0	0%	28	24	2	93%	35	1.0%	56	1.7%
South Wairarapa	RE-ELECTED	3	1	Male	0	0%	34	26	8	100%	63	1.6%	32	1.1%
Tasman	RE-ELECTED	4	0	Male	1	25%	120	62	35	81%	240	1.4%	281	1.8%
Marlborough	DEFEATED	5	4	Male	1	20%	120	64	9	61%	330	1.7%	169	0.9%
Kaikoura	RE-ELECTED	4	3	Male	1	25%	19	10	9	100%	44	2.6%	10	0.6%
Buller	RE-ELECTED	3	1	Male	0	0%	62	42	11	85%	94	1.9%	49	1.0%
Grey	UNOPPOSED	1	0	Male	0	0%	29	29	0	100%	No election		89	1.7%
Westland	RE-ELECTED	4	1	Male	1	25%	37	17	16	89%	72	1.8%	31	0.8%
Hurunui	STOOD DOWN	5	0	Male	2	40%	60	31	0	52%	4	0.1%	4	0.1%
Waimakariri	DEFEATED	6	5	Male	4	67%	87	55	7	71%	150	1.0%	318	2.0%
Banks Peninsula	DEFEATED	4	0	Male	1	25%	86	6	79	99%	13	0.3%	3	0.1%
Selwyn	RE-ELECTED	2	1	Male	0	0%	70	48	22	100%	277	2.8%	0	0.0%
Ashburton	RE-ELECTED	4	0	Male	1	25%	39	33	3	92%	22	0.2%	9	0.1%
Timaru	RE-ELECTED	2	2	Male	0	0%	47	29	7	77%	0	0.0%	0	0.0%

**Table 12.11: District Council Elections 2001 (cont)**

DISTRICT	MEMBERS AND CANDIDATES					SITTING MEMBERS RE-ELECTED				ELECTION OF WOMEN				Representation Electors per councillor (N)
	Unopposed Council Candidates					Candidates sitting members (N)	Candidates sitting members (%)	Councillors sitting members (N)	Councillors sitting members (%)	Women council candidates (N)	Women council candidates (%)	Women councillors (N)	Women councillors (%)	
	Council positions (N)	Council positions (N)	Candidates (N)	per position (N)	Contested wards (N)									
	(N)	(N)	(N)	(N)	(N)									
Mackenzie	10	3	13	1.3	2/4 wards	5	38%	4	40%	4	31%	2	20%	272
Waimate	8	3	11	1.4	1/5 wards	6	55%	6	75%	3	27%	0	0%	676
Chatham Islands	8	5	8	1.0	0 at large	6	75%	6	75%	4	50%	4	50%	46
Waitaki	15	8	34	2.3	3/4 wards	10	29%	8	53%	6	18%	5	33%	1,026
Central Otago	13	2	22	1.7	4/6 wards	7	32%	6	46%	3	14%	1	8%	855
Queenstown-Lakes	11	3	22	2.0	2/3 wards	7	32%	4	36%	5	23%	4	36%	1,144
Clutha	14	1	20	1.4	5/7 wards	9	45%	9	64%	4	20%	2	14%	887
Southland	12	5	20	1.7	4/12 wards	9	45%	7	58%	6	30%	5	42%	1,703
Gore	10	8	17	1.7	4/5 wards	8	47%	6	60%	7	41%	2	20%	903

DISTRICT COUNCIL SUMMARY	MEMBERS AND CANDIDATES					SITTING MEMBERS RE-ELECTED				ELECTION OF WOMEN				Representation Electors per councillor (N)
	Unopposed Council Candidates					Candidates sitting members (N)	Candidates sitting members (%)	Councillors sitting members (N)	Councillors sitting members (%)	Women council candidates (N)	Women council candidates (%)	Women councillors (N)	Women councillors (%)	
	Council positions (N)	Council positions (N)	Candidates (N)	per position (N)	Contested wards (N)									
	(N)	(N)	(N)	(N)	(N)									
North Island (n=37)	410	61	874	2.1	124/165 wards	316	36%	264	63%	238	27%	113	28%	1,955
South Island (n=21)	230	49	391	1.7	60/92 wards	166	42%	140	61%	92	24%	55	24%	1,235
Larger (n=31)	380	47	819	2.2	116/147 wards	301	36%	249	64%	217	26%	108	28%	2,327
Smaller (n=27)	260	63	446	1.7	68/110 wards	181	41%	155	60%	113	25%	60	23%	775
NZ District Councils (n=58)	640	120	1,265	2.0	184/257 wards	482	38%	404	62%	330	26%	168	26%	1,696

Table 12.11: District Council Elections 2001 (continued)

DISTRICT	ELECTORS (ALL WARDS)				VOTES AND TURNOUT (CONTESTED WARDS ONLY)						MAYORAL TURNOUT	
	Resident electors on roll		Ratepayer electors on roll		Resident voters (N)	Resident turnout (%)	Ratepayer voters (N)	Ratepayer turnout (%)	Total votes (N)	Overall voter turnout (%)	Total votes in mayoral election (N)	Average mayoral turnout (%)
	(N)	(N)	(%)	(N)								
Mackenzie	2,594	123	4.53%	2,717	1,384	70%	98	88%	1,482	71%	1,948	70%
Waimate	5,397	11	0.20%	5,408	1,749	80%	1	100%	1,750	80%	4,022	74%
Chatham Islands	354	12	3.28%	366							280	77%
Waitaki	15,312	85	0.55%	15,397	9,961	69%	42	91%	10,003	69%	10,610	69%
Central Otago	10,959	159	1.43%	11,118	6,809	75%	99	83%	6,908	75%	8,026	72%
Queenstown-Lakes	11,365	1,224	9.72%	12,589	6,711	66%	790	73%	7,501	67%	8,273	66%
Clutha	12,379	43	0.35%	12,422	5,208	65%	34	106%	5,242	65%	7,724	62%
Southland	20,286	155	0.76%	20,441	4,576	60%	79	136%	4,655	61%		
Gore	8,985	40	0.44%	9,025	6,147	72%	32	84%	6,179	72%	6,476	72%

DISTRICT COUNCIL SUMMARY	ELECTORS (ALL WARDS)				VOTES AND TURNOUT (CONTESTED WARDS ONLY)						MAYORAL TURNOUT	
	Resident electors on roll		Ratepayer electors on roll		Resident voters (N)	Average resident turnout (%)	Ratepayer voters (N)	Average ratepayer turnout (%)	Total votes (contested wards) (N)	Overall average turnout (%)	Total votes in mayoral election (N)	Average mayoral turnout (%)
	(N)	(N)	(%)	(N)								
North Island (n=37)	796,341	5,171	0.65%	801,479	394,622	55%	3,203	81%	397,825	55%	411,468	54%
South Island (n=21)	280,863	3,169	1.12%	284,032	150,451	64%	2,043	80%	152,494	65%	162,212	64%
Larger (n=31)	878,996	5,136	0.58%	884,099	442,735	56%	3,531	82%	446,266	56%	472,865	55%
Smaller (n=27)	198,208	3,204	1.59%	201,412	102,338	65%	1,715	79%	104,053	65%	100,815	65%
NZ District Councils (n=58)	1,077,204	8,340	0.77%	1,085,511	545,073	57%	5,246	81%	550,319	57%	573,680	56%

Resident average turnout has been adjusted for uncontested wards and includes a small number of ratepayer votes that were not separately counted.  
Ratepayer average turnout has been adjusted for uncontested wards and does not include ratepayer votes that were only counted with resident votes.  
Turnout in mayoral contests has been adjusted for uncontested mayoralties.

if ratepayer votes that were not separately counted.  
er votes that were only counted with resident votes.

**Table 12.11: District Council Elections 2001 (continued)**

DISTRICT	MAYORAL CONTEST						SPECIAL VOTES				INFORMAL VOTES			
	Sitting mayor (R/S/U/D)	Mayor & council candidates (N)	Mayor & council candidates (N)	Women mayoral candidates (Sex)	Women mayoral candidates (N)	Women mayoral candidates (%)	Special votes cast (N)	Resident special votes allowed (N)	Ratepayer special votes allowed (N)	All special votes allowed (%)	Informal mayoral votes (N)	Informal mayoral votes (%)	Informal votes for council (N)	Informal votes for council (%)
Mackenzie	STOOD DOWN	2	1	Male	0	0%	23	12	5	74%	79	4.2%	0	0.0%
Waimate	RE-ELECTED	4	1	Male	1	25%	30	26	4	100%	18	0.4%	14	0.8%
Chatham Islands	RE-ELECTED	4	0	Male	1	25%	14	14	0	100%	3	1.1%	0	0.0%
Waitaki	STOOD DOWN	7	4	Male	2	29%	98	68	12	82%	168	1.6%	138	1.4%
Central Otago	STOOD DOWN	6	0	Male	3	50%	123	63	49	91%	10	0.1%	9	0.1%
Queenstown-Lakes	STOOD DOWN	3	3	Male	0	0%	289	148	141	100%	220	2.7%	23	0.3%
Clutha	RE-ELECTED	2	2	Male	1	50%	36	18	9	75%	132	1.7%	56	1.1%
Southland	UN-OPPOSED	1	0	Female	1	100%	50	11	32	86%	No election		108	2.3%
Gore	DEFEATED	4	0	Male	1	25%	21	18	3	100%	53	0.8%	51	0.8%

DISTRICT COUNCIL SUMMARY	MAYORAL CONTEST						SPECIAL VOTES				INFORMAL VOTES			
	Sitting mayor (R/S/U/D)	Mayor & council candidates (N)	Mayor & council candidates (N)	Women mayoral candidates (Sex)	Women mayoral candidates (N)	Women mayoral candidates (%)	Special votes cast (N)	Resident special votes allowed (N)	Ratepayer special votes allowed (N)	All special votes allowed (%)	Informal mayoral votes (N)	Informal mayoral votes (%)	Informal votes for council (N)	Informal votes for council (%)
North Island (n=37)	16R/12S/4U/5D	140	62	7F/30M	27	19%	3,637	2,266	428	74%	7,779	1.9%	8,092	2.0%
South Island (n=21)	10R/5S/2U/4D	77	28	1F/20M	22	29%	1,460	804	453	86%	1,929	1.2%	1,362	0.9%
Larger (n=31)	17R/10S/1U/3D	130	68	6F/25M	24	21%	2,845	1,746	302	72%	5,915	1.6%	6,223	1.8%
Smaller (n=27)	9R/7S/5U/6D	87	22	2F/25M	25	24%	2,252	1,324	579	85%	3,793	1.9%	3,231	1.5%
NZ District Councils (n=58)	26R/17S/6U/9D	217	90	8F/50M	49	22%	5,097	3,070	881	78%	9,708	1.7%	9,454	1.7%

## Section 13: Community Board elections

This section deals with candidates, members and voting patterns for the election of the 146 community boards that existed in 2001, with details in Table 13.11. Since the previous election in 1998, two boards within the South Waikato and Taupo districts have been disestablished. There were 5 less positions to be filled, but slightly more electors represented by community boards this election.

### Positions and candidates

Compared to the previous election, there were much less candidates standing for slightly fewer positions. The ratio of candidates per position was the lowest on record. As well as the reduced number of boards, several boards had fewer members in 2001 than in 1998.

**Table 13.1: Community board candidate numbers, 1989 - 2001**

Positions	1989	1992	1995	1998	2001
Board positions	948	866	864	796	791
Board candidates	1,832	1,352	1,366	1,306	1,137
Candidates per position	1.9	1.6	1.6	1.6	1.4
Elected unopposed	95	222	179	163	221

### Contests

The majority of elections were contested (Table 13.2). However, more boards were elected unopposed than in the previous two elections. Elections were held throughout the areas of 100 boards, and in part of the territory of three boards, while in the remaining 43 boards no election was needed because the number of nominations was equal to or less than the number of vacancies.

**Table 13.2: Contested community board elections, 1989 - 2001**

Contests	1989	1992	1995	1998	2001
Community boards	159	156	155	148	146
Elections fully contested	141	108	117	111	100
Elections partly contested	2	5	7	4	3
No election needed	16	43	31	32	43

### Sitting members re-elected

In 2001, as in the 1995 election, sitting members of the previous board were generally more successful than other candidates (Table 13.3).

**Table 13.3: Sitting community board members re-elected, 1989 - 2001**

Sitting members	1989	1992	1995	1998	2001
Candidates who were sitting members	*	45%	59%	54%	59%
Members re-elected	*	not known	43%	39%	47%

\* All boards were constituted in 1989, so in that year there were no 'sitting members'

### Election of women

Less women stood as candidates in 2001 compared to all elections since 1989 (Table 13.4). However, due to a relatively fewer men standing women continued to comprise at least a third of candidates (33%). Women were as successful as in previous elections, comprising 32% of board members. As in previous elections, North Island boards had a rather higher proportion of

women than boards in the South Island. In 2001, nineteen boards had no women members, eight in the South Island and eleven in the North Island.

**Table 13.4: Representation of women in community board elections, 1989 - 2001**

Women elected	1989	1992	1995	1998	2001
Women candidates	487	437	438	442	375
Candidates who were women	27%	32%	32%	34%	33%
Women elected	271	277	281	281	248
Members who were women	29%	32%	33%	35%	32%
Boards with no women members	16	25	16	11	19

### Electors

There were slightly more electors on community board residential rolls in 2001 than in 1998, despite there being slightly less boards (Table 13.5). There were also slightly more electors on the ratepayer rolls.

**Table 13.5 Electors on the roll for community board elections, 1989 - 2001**

Electors	1989	1992	1995	1998	2001
Total residential electors	1.107m	1.096m	1.180m	1.221m	1.283m
Total ratepayer electors	none	13,039	8,012	6,102	6,535
Proportion of electors having ratepayer franchise	none	1.18%	0.67%	0.31%	0.51%

A few communities had considerably more ratepayer electors than average; these same communities had more ratepayers than average in 1998 also. They are situated in communities where non-residents would probably own large numbers of holiday homes. More than 10% of electors were on the ratepayer rolls in eight areas in 1998 and 2001: Tekapo, Hanmer Springs, Wanaka, Turangi-Tongariro, Tairua-Pauanui, Akaroa-Wairewa, Mercury Bay, Stewart Island. Twizel also had more than 10% of electors on the ratepayer roll, unlike in 1998.

### Representation

On average, each community board member in the 2001 elections represented 1,610 members (Table 13.6). Average representation in the North Island was 1,872 and 1,173 in the South Island. Actual representation ranged from each community board member representing 7,536 electors in Takapuna to 15 electors per member in Balfour in 2001. Between 1998 and 2001 elections, the number of electors per member rose by 86 electors per member while Balfour declined by 3 electors per member.

**Table 13.6: Average elector per member on community boards, 1989 - 2001**

Representation	1989	1992	1995	1998	2001
Electors per member	1,168	1,257	1,371	1,542	1,610

### Voter turnout

The 2001 recorded the lowest turnout of resident electors since 1989 (Table 13.7). However, in contrast, ratepayer elector turnout was the highest since 1989. This may be due to the inclusion of ratepayer votes in the overall calculations<sup>10</sup>.

**Table 13.7: Voter turnout in community board elections, 1989 - 2001**

Turnout	1989	1992	1995	1998	2001
Resident turnout	54%	48%	50%	50%	46%
Ratepayer turnout	N/A	68%	69%	65%	82%
Overall turnout	54%	49%	50%	50%	46%

### Resident and ratepayer electors who voted

The number of residential electors who voted was lower in 2001 compared to all previous community board elections (Table 13.8). This is despite an increase in the number of residential electors on the roll during this period (Table 13.5). The combination of these two factors resulted in the steep

<sup>10</sup> Ratepayer votes were not counted separately in previous elections

decrease in the resident turnout in 2001 (Table 13.7).

There was an increase both in the number of ratepayer electors who voted (Table 13.8) and in the number of ratepayer electors on the roll (Table 13.5) between 1998 and 2001. However, compared to the 1992 and 1995 elections, both the number of electors on the roll and those who voted were substantially lower. The higher ratepayer turnout in 2001 was due to the higher ratio of electors who voted relative to the number of electors on the roll.

**Table 13.8: Electors who voted in community board elections, 1989-2001**

Electors who voted	1989	1992	1995	1998	2001
Resident electors who voted	576,456	484,716	541,241	567,097	472,388
Ratepayer electors who voted	*	8,022	4,260	2,444	3,900

### Special votes

The 2001 election had the highest number of special votes cast (Table 13.9). More than two out of three special votes were allowed. This proportion was higher than in 1998.

**Table 13.9: Special votes in community board elections, 1989 - 2001**

Special votes	1989	1992	1995	1998	2001
Special votes cast	4,327	4,154	3,604	2,874	4,653
Proportion of total vote	0.8%	0.8%	0.7%	0.5%	1.0%
Proportion of special votes allowed	70%	77%	75%	67%	70%

### Informal votes

Less informal votes were recorded in the 2001 election of community boards than in the 1998 election (Table 13.10). As has been noted in previous sections, it seems likely that most of these votes were counted as informal because parts of a combined voting paper had been left blank.

**Table 13.10: Informal votes in community board elections, 1989 - 2001**

Informal votes	1989	1992	1995	1998	2001
Informal votes recorded	32,352	18,732	21,211	38,373	22,663
Proportion of total votes	6%	4%	4%	7%	5%

Four boards had more than 10% of votes informal: Hagley-Ferrymead, Fendalton-Waimairi, Shirley-Papanui and National Park. The other three community boards in the Christchurch district also had relatively high proportions of informal votes.

Table 13.11: Community Board Elections 2001

COMMUNITY BOARD	MEMBERS AND CANDIDATES					SITTING MEMBERS RE-ELECTED				ELECTION OF WOMEN				Representation Electors per CB member (N)
	Board positions (N)	Members		Candidates		Candidates sitting members (N)	Candidates sitting members (%)	Sitting members elected (N)	Board sitting members (%)	Candidates		Women board members (N)	Board members women (%)	
		Elected members (N)	unopposed (N)	Candidates (N)	per position (N)					Women who were women (%)				
Hokianga	5	5	0	10	2.0	4	40%	3	60%	2	20%	1	20%	726
Northern	5	5	0	9	1.8	5	56%	3	60%	2	22%	1	20%	2,266
Kaikohe	6	6	0	10	1.7	4	40%	4	67%	5	50%	3	50%	763
Kerikeri	3	3	0	10	3.3	4	40%	1	33%	3	30%	1	33%	2,710
Kawakawa	6	6	0	7	1.2	6	86%	6	100%	4	57%	3	50%	773
Whangaroa	5	5	0	9	1.8	3	33%	2	40%	4	44%	1	20%	379
Albany	4	4	0	7	1.8	4	57%	3	75%	1	14%	1	25%	3,508
Birkenhead	4	4	0	12	3.0	4	33%	4	100%	5	42%	1	25%	6,744
Devonport	4	0	4	4	1.0	2	50%	2	50%	0	0%	0	0%	3,135
East Coast Bays	4	4	0	8	2.0	2	25%	1	25%	5	63%	1	25%	6,645
Glenfield	4	4	0	11	2.8	4	36%	2	50%	3	27%	2	50%	5,122
Takapuna	4	4	0	8	2.0	4	50%	2	50%	3	38%	1	25%	7,536
Henderson	5	5	0	20	4.0	4	20%	2	40%	4	20%	2	40%	5,386
Massey	6	6	0	17	2.8	4	24%	3	50%	7	41%	2	33%	5,344
New Lynn	5	5	0	16	3.2	5	31%	2	40%	5	31%	2	40%	6,569
Waitakere	6	6	0	10	1.7	3	30%	1	17%	4	40%	4	67%	2,935
Avondale	5	5	0	10	2.0	3	30%	3	60%	6	60%	4	80%	4,881
Eastern Bays	5	5	0	6	1.2	4	67%	4	80%	3	50%	2	40%	6,395
Great Barrier	5	0	5	5	1.0	4	80%	4	80%	2	40%	2	40%	138
Hobson	6	6	0	13	2.2	1	8%	1	17%	5	38%	1	17%	6,957
Maungakiekie	5	5	0	13	2.6	4	31%	4	80%	7	54%	3	60%	5,482
Eden-Albert	6	6	0	13	2.2	3	23%	2	33%	7	54%	2	33%	6,437
Mount Roskill	5	5	0	12	2.4	3	25%	2	40%	7	58%	2	40%	6,064
Tamaki	5	5	0	6	1.2	3	50%	3	60%	3	50%	3	60%	5,097
Waiheke	5	5	0	17	3.4	3	18%	0	0%	6	35%	3	60%	1,041
Western Bays	5	5	0	12	2.4	4	33%	3	60%	5	42%	2	40%	5,545

**Table 13.11: Community Board Elections 2001 (continued)**

COMMUNITY BOARD	ELECTORS ON THE ROLL			VOTING AND TURNOUT					SPECIAL VOTES			INFORMALS	
	Resident electors	Ratepayer electors	Ratepayer electors	Resident voters	Resident voters	Ratepayer voters	Ratepayer turnout	Overall turnout	Specials cast	Specials allowed	Specials allowed	Informal votes	Informal votes
	(N)	(N)	(%)	(N)	(%)	(N)	(%)	(%)	(N)	(N)	(%)	(N)	(%)
Hokianga	3,598	31	0.9%	1,968	55%	23	74%	55%	28	13	46%	80	4.0%
Northern	11,275	55	0.5%	5,962	53%	43	78%	53%	85	47	55%	291	4.8%
Kaikohe	4,568	9	0.2%	2,516	55%	3	33%	55%	53	37	70%	157	6.2%
Kerikeri	8,131	0	0.0%				No count		36	26	72%		No count
Kawakawa	4,636	0	0.0%				No count		32	11	34%		No count
Whangaroa	1,872	25	1.3%	1,104	59%	2	8%	58%	20	17	85%	46	4.2%
Albany	14,016	14	0.1%	4,487	32%		No count	32%	29	21	72%	208	4.6%
Birkenhead	26,956	19	0.1%	10,602	39%		No count	39%	52	48	92%	471	4.4%
Devonport	12,527	14	0.1%				No election			No election			No election
East Coast Bays	26,565	16	0.1%	10,045	38%		No count	38%	67	58	87%	538	5.4%
Glenfield	20,477	12	0.1%	7,042	34%		No count	34%	39	32	82%	371	5.3%
Takapuna	30,097	45	0.1%	12,191	41%		No count	40%	70	68	97%	764	6.3%
Henderson	26,902	28	0.1%				No count			No count		425	No count
Massey	32,035	30	0.1%				No count			No count		480	No count
New Lynn	32,808	35	0.1%				No count			No count		484	No count
Waitakere	17,529	83	0.5%				No count			No count		309	No count
Avondale	24,351	54	0.2%	10,421	43%	44	81%	43%	86	69	80%	11	0.1%
Eastern Bays	31,925	51	0.2%	16,164	51%	41	80%	51%	154	95	62%	8	0.0%
Great Barrier	637	53	7.7%				No election			No election			No election
Hobson	41,591	150	0.4%	18,582	45%	126	84%	45%	283	191	67%	23	0.1%
Maungakiekie	27,306	104	0.4%	10,558	39%	93	89%	39%	100	70	70%	19	0.2%
Eden-Albert	38,509	115	0.3%	15,475	40%	103	90%	40%	232	155	67%	17	0.1%
Mount Roskill	30,284	38	0.1%	13,645	45%	36	95%	45%	131	84	64%	25	0.2%
Tamaki	25,414	69	0.3%	8,728	34%	56	81%	34%	74	31	42%	6	0.1%
Waiheke	4,878	326	6.3%	3,056	63%	293	90%	64%	135	112	83%	9	0.3%
Western Bays	27,646	80	0.3%	11,839	43%	66	83%	43%	294	221	75%	23	0.2%

Table 13.11: Community Board Elections 2001 (continued)

COMMUNITY BOARD	MEMBERS AND CANDIDATES					SITTING MEMBERS RE-ELECTED				ELECTION OF WOMEN				Representation Electors per CB member
	Board positions (N)	Members		Candidates		Candidates sitting members (N)	Candidates sitting members (%)	Sitting members elected (N)	Board sitting members (%)	Women candidates (N)	Candidates who were women (%)	Women board members (N)	Board members women (%)	
		Elected members (N)	electe unopposed (N)	Candidates (N)	per position (N)									
Clevedon	6	0	6	6	1.0	3	50%	3	50%	0	0%	0	0%	1,257
Howick	6	6	0	8	1.3	2	25%	2	33%	4	50%	3	50%	5,632
Mangere	6	6	0	18	3.0	5	28%	1	17%	8	44%	3	50%	4,556
Manurewa	8	8	0	13	1.6	7	54%	7	88%	6	46%	3	38%	4,892
Otara	6	6	0	9	1.5	3	33%	3	50%	6	67%	4	67%	3,538
Pakuranga	6	6	0	14	2.3	4	29%	3	50%	6	43%	2	33%	4,415
Papatoetoe	6	6	0	14	2.3	3	21%	1	17%	6	43%	2	33%	4,008
Onewhero-Tuakau	6	6	0	7	1.2	4	57%	4	67%	3	43%	3	50%	753
Waiuku-Awhitu	6	0	5	5	0.8	3	60%	3	60%	1	20%	1	20%	1,656
Coromandel-Colville	3	0	3	3	1.0	1	33%	1	33%	0	0%	0	0%	739
Mercury Bay	4	4	0	7	1.8	2	29%	2	50%	2	29%	0	0%	1,121
Thames	6	0	6	6	1.0	2	33%	2	33%	1	17%	1	17%	1,275
Tairua-Pauanui	5	0	4	4	0.8	2	50%	2	50%	2	50%	2	50%	427
Whangamata	4	4	0	7	1.8	0	0%	0	0%	4	57%	2	50%	915
Huntly	6	6	0	10	1.7	5	50%	4	67%	3	30%	1	17%	713
Ngaruawahia	6	6	0	7	1.2	3	43%	3	50%	3	43%	3	50%	638
Raglan	6	6	0	10	1.7	3	30%	2	33%	3	30%	2	33%	340
Taupiri	6	6	0	7	1.2	5	71%	4	67%	5	71%	4	67%	49
Matamata	6	0	6	6	1.0	2	33%	2	33%	3	50%	3	50%	1,331
Morrinsville	6	6	0	7	1.2	6	86%	6	100%	3	43%	3	50%	1,186
Te Aroha	6	6	0	7	1.2	4	57%	3	50%	4	57%	3	50%	854
Cambridge	6	0	6	6	1.0	4	67%	4	67%	2	33%	2	33%	1,948
Te Awamutu	6	6	0	8	1.3	3	38%	3	50%	2	25%	2	33%	1,760
Kawhia	4	0	4	4	1.0	3	75%	3	75%	1	25%	1	25%	87
Otorohanga	6	6	0	7	1.2	6	86%	6	100%	1	14%	1	17%	289
Piopio	4	0	4	4	1.0	3	75%	3	75%	0	0%	0	0%	78

**Table 13.11: Community Board Elections 2001 (continued)**

COMMUNITY BOARD	ELECTORS ON THE ROLL			VOTING AND TURNOUT					SPECIAL VOTES			INFORMALS	
	Resident electors	Ratepayer electors	Ratepayer electors	Resident voters	Resident turnout	Ratepayer Voters	Ratepayer turnout	Overall turnout	Specials cast	Specials allowed	Specials allowed	Informal votes	Informal votes
	(N)	(N)	(%)	(N)	(%)	(N)	(%)	(%)	(N)	(N)	(%)	(N)	(%)
Clevedon	7,506	35	0.5%	No election					No election			No election	
Howick	33,778	11	0.0%	13,741	41%	9	82%	41%	68	36	53%	722	5.3%
Mangere	27,318	15	0.1%	10,663	39%	15	100%	39%	128	78	61%	175	1.6%
Manurewa	39,106	29	0.1%	12,311	31%	23	79%	31%	90	39	43%	377	3.1%
Otara	21,199	27	0.1%	6,777	32%	20	74%	32%	100	48	48%	250	3.7%
Pakuranga	26,481	10	0.0%	10,292	39%	8	80%	39%	40	20	50%	399	3.9%
Papatoetoe	24,027	21	0.1%	9,050	38%	15	71%	38%	56	32	57%	267	2.9%
Onewhero-Tuakau	4,490	26	0.6%	2,050	46%	15	58%	45%	13	13	100%	2	0.1%
Waiuku-Awhitu	9,894	40	0.4%	No election					No election			No election	
Coromandel-Colville	2,125	91	4.1%	No election					No election			No election	
Mercury Bay	3,966	516	11.5%	2,229	56%	436	84%	59%	45	31	69%	4	0.2%
Thames	7,601	47	0.6%	No election					No election			No election	
Tairua-Pauanui	1,866	268	12.6%	No election					No election			No election	
Whangamata	3,373	288	7.9%	2,120	63%	262	91%	65%	48	39	81%	0	0.0%
Huntly	4,271	5	0.1%	2,263	53%	4	80%	53%	14	11	79%	144	6.4%
Ngaruahia	3,814	11	0.3%	1,946	51%	9	82%	51%	32	26	81%	156	8.0%
Raglan	2,009	28	1.4%	1,111	55%	7	25%	55%	16	12	75%	51	4.6%
Taupiri	291	0	0.0%	147	51%	No count		51%	0	0	0%	5	3.4%
Matamata	7,980	7	0.1%	No election					No election			No election	
Morrinsville	7,103	14	0.2%	3,610	51%	13	93%	51%	6	4	67%	185	5.1%
Te Aroha	5,115	9	0.2%	2,958	58%	6	67%	58%	8	2	25%	187	6.3%
Cambridge	11,678	9	0.1%	No election					No election			No election	
Te Awamutu	10,552	8	0.1%	5,561	53%	4	50%	53%	34	28	82%	266	4.8%
Kawhia	333	14	4.0%	No election					No election			No election	
Otorohanga	1,714	18	1.0%	921	54%	15	83%	54%	5	5	100%	6	0.6%
Piopio	310	0	0.0%	No election					No election			No election	

Table 13.11: Community Board Elections 2001 (continued)

COMMUNITY BOARD	MEMBERS AND CANDIDATES					SITTING MEMBERS RE-ELECTED				ELECTION OF WOMEN				Representation Electors per CB member
	Board positions (N)	Members		Candidates		Candidates sitting members (N)	Candidates sitting members (%)	Sitting members elected (N)	Board sitting members (%)	Women candidates (N)	Candidates who were women (%)	Women board members (N)	Board members women (%)	
		Elected members (N)	unopposed (N)	Candidates (N)	per position (N)									
Tirau	6	0	5	5	0.8	5	100%	5	100%	2	40%	2	40%	233
Turangi-Tongariro	6	6	0	7	1.2	4	57%	4	67%	5	71%	4	67%	598
Katikati	4	4	0	7	1.8	4	57%	3	75%	2	29%	1	25%	553
Maketu	4	4	0	11	2.8	2	18%	0	0%	3	27%	1	25%	171
Omokoroa	4	4	0	7	1.8	4	57%	2	50%	0	0%	0	0%	370
Te Puke	6	0	6	6	1.0	4	67%	4	67%	3	50%	3	50%	783
Waihi Beach	4	4	0	6	1.5	2	33%	1	25%	1	17%	1	25%	641
Edgecumbe	6	0	6	6	1.0	5	83%	5	83%	0	0%	0	0%	187
Murupara	6	6	0	8	1.3	4	50%	4	67%	3	38%	3	50%	178
Ohope	6	6	0	8	1.3	3	38%	2	33%	2	25%	2	33%	336
Taneatua	6	0	6	6	1.0	6	100%	6	100%	2	33%	2	33%	72
Clifton	4	0	4	4	1.0	3	75%	3	75%	2	50%	2	50%	400
Inglewood	4	0	4	4	1.0	4	100%	4	100%	1	25%	1	25%	1,229
Kaitake	4	0	4	4	1.0	1	25%	1	25%	1	25%	1	25%	658
Waitara	4	0	4	4	1.0	2	50%	2	50%	1	25%	1	25%	1,314
Egmont Plains	8	6	2	10	1.3	8	80%	6	75%	2	20%	1	13%	883
Eltham	6	6	0	7	1.2	4	57%	4	67%	1	14%	1	17%	463
Hawera	4	0	3	3	0.8	2	67%	2	67%	1	33%	1	33%	1,456
Patea	6	6	0	8	1.3	6	75%	4	67%	0	0%	0	0%	467
National Park	5	5	0	7	1.4	2	29%	1	20%	3	43%	3	60%	142
Ohura	5	0	5	5	1.0	2	40%	2	40%	2	40%	2	40%	195
Waimarino	6	6	0	8	1.3	5	63%	5	83%	2	25%	2	33%	375
Wanganui Rural	6	6	0	8	1.3	5	63%	5	83%	2	25%	2	33%	582
Ratana	4	4	0	5	1.3	2	40%	2	50%	2	40%	2	50%	67
Taihape	4	4	0	8	2.0	3	38%	3	75%	3	38%	1	25%	624

**Table 13.11: Community Board Elections 2001 (continued)**

COMMUNITY BOARD	ELECTORS ON THE ROLL			VOTING AND TURNOUT					SPECIAL VOTES			INFORMALS	
	Resident electors	Ratepayer electors	Ratepayer electors	Resident voters	Resident turnout	Ratepayer Voters	Ratepayer turnout	Overall turnout	Specials cast	Specials allowed	Specials allowed	Informal votes	Informal votes
	(N)	(N)	(%)	(N)	(%)	(N)	(%)	(%)	(N)	(N)	(%)	(N)	(%)
Tirau	1,383	13	0.9%	No election					No election			No election	
Turangi-Tongariro	3,126	463	12.9%	1,617	52%	350	76%	55%	22	10	46%	49	2.5%
Katikati	2,201	12	0.5%	1,260	57%	13	108%	58%	11	11	100%	0	0.0%
Maketu	646	39	5.7%	361	56%	35	90%	58%	25	13	52%	1	0.3%
Omokoroa	1,461	20	1.4%	884	61%	17	85%	61%	25	22	88%	0	0.0%
Te Puke	4,681	19	0.4%	No election					No election			No election	
Waihi Beach	2,285	280	10.9%	1,361	60%	280	100%	64%	112	92	82%	1	0.1%
Edgecumbe	1,114	5	0.4%	No election					No election			No election	
Murupara	1,065	3	0.3%	504	47%	2	67%	47%	0	0	0%	31	6.1%
Ohope	1,978	40	2.0%	1,439	73%	32	80%	73%	67	17	25%	142	9.7%
Taneatua	429	0	0.0%	No election					No election			No election	
Clifton	1,588	13	0.8%	No election					No election			No election	
Inglewood	4,913	1	0.0%	No election					No election			No election	
Kaitake	2,627	6	0.2%	No election					No election			No election	
Waitara	5,257	0	0.0%	No election					No election			No election	
Egmont Plains	7,053	7	0.1%	2,701	60%	5	100%	60%	15	3	20%	31	1.1%
Eltham	2,771	4	0.1%	1,662	60%	4	100%	60%	10	8	80%	32	1.9%
Hawera	5,822	2	0.0%	No election					No election			No election	
Patea	2,799	1	0.0%	1,567	56%	1	100%	56%	7	5	71%	20	1.3%
National Park	686	23	3.2%	344	50%	16	70%	51%	1	1	100%	39	10.8%
Ohura	970	5	0.5%	No election					No election			No election	
Waimarino	2,209	43	1.9%	1,261	57%	34	79%	58%	11	10	91%	17	1.3%
Wanganui Rural	3,467	26	0.7%	2,403	69%	22	85%	69%	29	27	93%	0	0.0%
Ratana	268	0	0.0%	153	57%	No count		57%	2	0	0%	9	5.8%
Taihape	2,493	3	0.1%	1,581	63%	3	100%	63%	8	6	75%	67	4.2%

Table 13.11: Community Board Elections 2001 (continued)

COMMUNITY BOARD	MEMBERS AND CANDIDATES					SITTING MEMBERS RE-ELECTED				ELECTION OF WOMEN				Representation Electors per CB member (N)
	Board positions (N)	Members		Candidates		Candidates sitting members (N)	Candidates sitting members (%)	Sitting members elected (N)	Board sitting members (%)	Women candidates (N)	Candidates who were women (%)	Women board members (N)	Board members women (%)	
		Elected members (N)	unopposed (N)	electe (N)	Candidates per position (N)									
Dannevirke	6	6	0	7	1.2	2	29%	2	33%	3	43%	3	50%	1,099
Eketahuna	6	6	0	7	1.2	6	86%	5	83%	3	43%	2	33%	181
Pahiatua	6	6	0	7	1.2	2	29%	2	33%	5	71%	4	67%	487
Woodville	5	0	5	5	1.0	2	40%	2	40%	0	0%	0	0%	312
Foxton	5	5	0	7	1.4	5	71%	4	80%	2	29%	0	0%	629
Hastings Rural	4	2	2	6	1.5	2	33%	1	25%	4	67%	2	50%	1,697
Otaki	6	6	0	7	1.2	4	57%	4	67%	3	43%	2	33%	919
Paekakariki	5	5	0	8	1.6	2	25%	0	0%	4	50%	2	40%	244
Waikanae	6	6	0	7	1.2	4	57%	3	50%	1	14%	0	0%	1,379
Eastbourne	5	5	0	9	1.8	3	33%	1	20%	1	11%	1	20%	734
Petone	6	6	0	7	1.2	4	57%	3	50%	4	57%	3	50%	1,418
Wainuiomata	6	6	0	9	1.5	4	44%	4	67%	2	22%	2	33%	1,775
Makara-Ohariu	6	6	0	8	1.3	4	50%	4	67%	3	38%	2	33%	99
Tawa	6	6	0	10	1.7	6	60%	5	83%	1	10%	1	17%	1,532
Featherston	5	5	0	8	1.6	1	13%	1	20%	3	38%	2	40%	462
Greytown	4	0	3	3	0.8	3	100%	3	100%	1	33%	1	33%	533
Martinborough	6	0	4	4	0.7	3	75%	3	75%	2	50%	2	50%	311
Golden Bay	4	0	4	4	1.0	3	75%	3	75%	1	25%	1	25%	873
Motueka	4	4	0	5	1.3	0	0%	0	0%	1	20%	1	25%	1,757
Inangahua	6	6	0	10	1.7	3	30%	3	50%	2	20%	2	33%	234
Northern Ward	4	4	0	6	1.5	0	0%	0	0%	2	33%	1	25%	348
Hanmer Springs	5	5	0	7	1.4	3	43%	3	60%	2	29%	2	40%	131
Kaiapoi	6	6	0	9	1.5	6	67%	6	100%	1	11%	1	17%	1,223

**Table 13.11: Community Board Elections 2001 (continued)**

COMMUNITY BOARD	ELECTORS ON THE ROLL			VOTING AND TURNOUT					SPECIAL VOTES			INFORMALS	
	Resident electors	Ratepayer electors	Ratepayer electors	Resident voters	Resident turnout	Ratepayer Voters	Ratepayer turnout	Overall turnout	Specials cast	Specials allowed	Specials allowed	Informal votes	Informal votes
	(N)	(N)	(%)	(N)	(%)	(N)	(%)	(%)	(N)	(N)	(%)	(N)	(%)
Dannevirke	6,586	7	0.1%	3,775	57%	5	71%	57%	22	13	59%	155	4.1%
Eketahuna	1,087	1	0.1%	679	62%	1	100%	63%	2	1	50%	13	1.9%
Pahiatua	2,918	3	0.1%	1,678	58%	3	100%	58%	5	1	20%	32	1.9%
Woodville	1,558	1	0.1%	No election					No election			No election	
Foxton	3,135	11	0.3%	1,964	63%	8	73%	63%	9	5	56%	23	1.2%
Hastings Rural	6,763	26	0.4%	2,234	53%	No count		53%	No count			No count	
Otaki	5,430	84	1.5%	3,154	58%	49	58%	58%	24	24	100%	0	0.0%
Paekakariki	1,207	13	1.1%	628	52%	10	77%	52%	12	12	100%	0	0.0%
Waikanae	8,121	153	1.8%	5,609	69%	106	69%	69%	48	45	94%	3	0.1%
Eastbourne	3,664	4	0.1%	1,903	52%	No count		52%	15	14	93%	40	2.1%
Petone	8,483	27	0.3%	3,502	41%	No count		41%	33	31	94%	100	2.9%
Wainuiomata	10,646	3	0.0%	4,877	46%	No count		46%	19	17	89%	82	1.7%
Makara-Ohariu	594	2	0.3%	350	59%	1	50%	59%	7	6	86%	25	7.1%
Tawa	9,181	11	0.1%	4,709	51%	14	127%	51%	26	23	88%	205	4.3%
Featherston	2,307	4	0.2%	1,441	62%	2	50%	62%	11	9	82%	38	2.6%
Greytown	2,125	5	0.2%	No election					No election			No election	
Martinborough	1,844	19	1.0%	No election					No election			No election	
Golden Bay	3,384	106	3.0%	No election					No election			No election	
Motueka	6,992	37	0.5%	4,026	57%	28	76%	58%	28	21	75%	137	3.4%
Inangahua	1,388	16	1.1%	852	61%	12	75%	62%	4	2	50%	2	0.2%
Northern Ward	1,387	6	0.4%	797	58%	4	67%	58%	0	0	0%	13	1.6%
Hanmer Springs	567	88	13.4%	354	62%	70	80%	65%	9	4	44%	0	0.0%
Kaiapoi	7,334	1	0.0%	4,218	58%	1	100%	58%	0	0	0%	45	1.1%

Table 13.11: Community Board Elections 2001 (continued)

COMMUNITY BOARD	MEMBERS AND CANDIDATES					SITTING MEMBERS RE-ELECTED				ELECTION OF WOMEN				Representation Electors per CB member (N)
	Board positions (N)	Members		Candidates		Candidates sitting members (N)	Candidates sitting members (%)	Sitting members elected (N)	Board sitting members (%)	Women candidates (N)	Candidates who were women (%)	Women board members (N)	Board members women (%)	
		Elected members (N)	unopposed (N)	electe (N)	Candidates per position (N)									
Burwood-Pegasus	6	6	0	12	2.0	5	42%	4	67%	4	33%	3	50%	6,179
Fendalton-Waimairi	6	6	0	10	1.7	4	40%	3	50%	5	50%	3	50%	6,411
Hagley-Ferrymead	6	6	0	13	2.2	5	38%	3	50%	3	23%	1	17%	6,134
Riccarton-Wigram	6	6	0	13	2.2	5	38%	4	67%	3	23%	1	17%	6,517
Shirley-Papanui	9	9	0	10	1.1	5	50%	5	56%	4	40%	3	33%	6,542
Spreydon-Heathcote	6	6	0	10	1.7	6	60%	6	100%	5	50%	4	67%	6,382
Akaroa-Wairewa	4	4	0	6	1.5	3	50%	3	75%	0	0%	0	0%	574
Lyttleton- Mt Herbert	5	6	0	5	1.0	4	80%	3	60%	1	20%	1	20%	816
Darfield	6	3	3	10	1.7	5	50%	2	33%	2	20%	1	17%	459
Methven	5	0	4	4	0.8	2	50%	2	50%	1	25%	1	25%	182
Geraldine	6	6	0	7	1.2	5	71%	5	83%	2	29%	2	33%	583
Pleasant Point	6	0	6	6	1.0	5	83%	5	83%	1	17%	1	17%	318
Temuka	4	4	0	6	1.5	4	67%	3	75%	3	50%	2	50%	1,095
Fairlie	5	5	0	6	1.2	4	67%	3	60%	2	33%	2	40%	126
Tekapo	6	6	0	9	1.5	4	44%	4	67%	3	33%	2	33%	67
Twizel	6	0	4	4	0.7	2	50%	2	50%	1	25%	1	25%	165
Ahuriri	6	6	0	8	1.3	5	63%	4	67%	3	38%	2	33%	167
Waihemo	6	6	0	9	1.5	6	67%	5	83%	2	22%	0	0%	284
Alexandra	6	0	6	9	1.5	2	22%	2	33%	3	33%	3	50%	571
Cromwell	6	6	0	7	1.2	6	86%	5	83%	1	14%	1	17%	464
Earnsclough- Manuherikia	6	0	5	5	0.8	3	60%	3	60%	1	20%	1	20%	397
Maniototo	6	0	6	6	1.0	3	50%	3	50%	1	17%	1	17%	214
Roxburgh	5	0	5	5	1.0	5	100%	5	100%	1	20%	1	20%	249

**Table 13.11: Community Board Elections 2001 (continued)**

COMMUNITY BOARD	ELECTORS ON THE ROLL			VOTING AND TURNOUT					SPECIAL VOTES			INFORMALS	
	Resident electors	Ratepayer electors	Ratepayer electors	Resident voters	Resident turnout	Ratepayer Voters	Ratepayer turnout	Overall turnout	Specials cast	Specials allowed	Specials allowed	Informal votes	Informal votes
	(N)	(N)	(%)	(N)	(%)	(N)	(%)	(%)	(N)	(N)	(%)	(N)	(%)
Burwood-Pegasus	37,056	16	0.0%	18,294	49%	14	88%	49%	107	66	62%	1,811	9.9%
Fendalton-Waimairi	38,413	51	0.1%	21,005	55%	66	129%	55%	178	122	69%	2,467	11.7%
Hagley-Ferrymead	36,722	84	0.2%	16,231	44%	78	93%	44%	169	111	66%	1,942	11.9%
Riccarton-Wigram	39,046	53	0.1%	18,224	47%	62	117%	47%	114	75	66%	1,609	8.8%
Shirley-Papanui	58,836	46	0.1%	29,106	49%	44	96%	50%	201	143	71%	3,324	11.4%
Spreydon-Heathcote	38,239	50	0.1%	18,864	49%	36	72%	49%	162	106	65%	1,711	9.1%
Akaroa-Wairewa	2,020	276	12.0%	427	62%	1	6%	60%	21	21	100%	3	0.7%
Lyttleton- Mt Herbert	3,956	122	3.0%			No count			45	44	98%	No count	
Darfield	2,737	19	0.7%	1,732	63%	15	79%	64%	40	35	88%	23	1.3%
Methven	909	0	0.0%			No election			No election			No election	
Geraldine	3,480	16	0.5%	2,244	64%	15	94%	65%	3	3	100%	16	0.7%
Pleasant Point	1,905	4	0.2%			No election			No election			No election	
Temuka	4,374	4	0.1%	2,733	62%	3	75%	63%	9	8	89%	40	1.5%
Fairlie	625	7	1.1%	507	81%	4	57%	81%	13	2	15%	3	0.6%
Tekapo	335	69	17.1%	230	69%	66	96%	73%	3	3	100%	0	0.0%
Twizel	890	99	10.0%			No election			No election			No election	
Ahuriri	964	40	4.0%	504	52%	No count		50%	7	6	86%	5	1.0%
Waihemo	1,680	25	1.5%	918	55%	No count		54%	7	4	57%	13	1.4%
Alexandra	3,384	43	1.3%	2,471	73%	34	79%	73%	54	47	87%	3	0.1%
Cromwell	2,751	31	1.1%	2,017	73%	24	77%	73%	38	29	76%	0	0.0%
Earnsclough- Manuherikia	2,343	40	1.7%			No election			No election			No election	
Maniototo	1,253	28	2.2%			No election			No election			No election	
Roxburgh	1,228	17	1.4%			No election			No election			No election	

Table 13.11: Community Board Elections 2001 (continued)

COMMUNITY BOARD	MEMBERS AND CANDIDATES					SITTING MEMBERS RE-ELECTED				ELECTION OF WOMEN				Representation Electors per CB member (N)
	Board positions (N)	Members		Candidates		Candidates sitting members (N)	Candidates sitting members (%)	Sitting members elected (N)	Board sitting members (%)	Women candidates (N)	Candidates who were women (%)	Women board members (N)	Board members women (%)	
		Elected members (N)	electe unopposed (N)	Candidates (N)	per position (N)									
Wanaka	6	0	6	7	1.2	4	57%	4	67%	1	14%	1	17%	663
Mosgiel-Taieri	4	4	0	9	2.3	4	44%	3	75%	2	22%	0	0%	1,781
Port Chalmers	6	0	6	6	1.0	4	67%	4	67%	3	50%	3	50%	656
Saddle Hill	6	0	6	6	1.0	3	50%	3	50%	0	0%	0	0%	649
Strath Taieri	4	4	0	8	2.0	4	50%	4	100%	3	38%	3	75%	83
Waikouaiti Coast	6	0	6	6	1.0	4	67%	4	67%	2	33%	2	33%	406
Lawrence-Tuapeka	6	6	0	8	1.3	3	38%	3	50%	2	25%	2	33%	155
West Otago	6	6	0	7	1.2	1	14%	1	17%	2	29%	2	33%	273
Balfour	6	0	6	6	1.0	5	83%	5	83%	0	0%	0	0%	15
Edendale	6	6	0	7	1.2	3	43%	3	50%	3	43%	2	33%	67
Lumsden	6	0	5	5	0.8	3	60%	3	60%	2	40%	2	40%	49
Riversdale	6	0	6	6	1.0	4	67%	4	67%	0	0%	0	0%	44
Riverton	6	6	0	9	1.5	3	33%	3	50%	2	22%	2	33%	214
Stewart Island	6	6	0	8	1.3	2	25%	2	33%	2	25%	2	33%	54
Te Anau	6	6	0	7	1.2	4	57%	4	67%	2	29%	2	33%	350
Tuatapere	6	6	0	8	1.3	4	50%	4	67%	1	13%	1	17%	188
Wallace	6	0	6	6	1.0	4	67%	4	67%	0	0%	0	0%	401
Wallacetown	6	0	6	6	1.0	5	83%	5	83%	2	33%	2	33%	73
Winton	6	6	0	8	1.3	4	50%	4	67%	4	50%	3	50%	592
Wyndham	6	0	4	4	0.7	3	75%	3	75%	0	0%	0	0%	65
Bluff	6	6	0	7	1.2	6	86%	5	83%	3	43%	2	33%	256
Bush	6	0	5	5	0.8	5	100%	5	100%	2	40%	2	40%	317
Otatara	6	6	0	7	1.2	6	86%	6	100%	1	14%	1	17%	362
<b>94 boards North Island</b>	<b>495</b>	<b>372</b>	<b>116</b>	<b>760</b>	<b>1.5</b>	<b>331</b>	<b>44%</b>	<b>292</b>	<b>56%</b>	<b>275</b>	<b>36%</b>	<b>169</b>	<b>35%</b>	<b>1,872</b>
<b>52 boards South Island</b>	<b>296</b>	<b>189</b>	<b>105</b>	<b>377</b>	<b>1.3</b>	<b>201</b>	<b>53%</b>	<b>164</b>	<b>64%</b>	<b>100</b>	<b>27%</b>	<b>79</b>	<b>27%</b>	<b>1,173</b>
<b>146 boards New Zealand</b>	<b>791</b>	<b>561</b>	<b>221</b>	<b>1,137</b>	<b>1.4</b>	<b>532</b>	<b>47%</b>	<b>456</b>	<b>59%</b>	<b>375</b>	<b>33%</b>	<b>248</b>	<b>32%</b>	<b>1,610</b>

**Table 13.11: Community Board Elections 2001 (continued)**

COMMUNITY BOARD	ELECTORS ON THE ROLL			VOTING AND TURNOUT					SPECIAL VOTES			INFORMALS	
	Resident electors	Ratepayer electors	Ratepayer electors	Resident voters	Resident turnout	Ratepayer Voters	Ratepayer turnout	Overall turnout	Specials cast	Specials allowed	Specials allowed	Informal votes	Informal votes
	(N)	(N)	(%)	(N)	(%)	(N)	(%)	(%)	(N)	(N)	(%)	(N)	(%)
Wanaka	3,456	524	13.2%	2,307	67%	356	68%	67%	82	67	82%	0	0.0%
Mosgiel-Taieri	10,675	8	0.1%	7,025	66%	7	88%	66%	26	21	81%	268	3.8%
Port Chalmers	3,924	10	0.3%				No election			No election		No election	
Saddle Hill	3,891	3	0.1%				No election			No election		No election	
Strath Taieri	494	4	0.8%	329	67%	4	100%	67%	0	0	-	4	1.2%
Waikouaiti Coast	2,408	25	1.0%				No election			No election		No election	
Lawrence-Tuapeka	924	7	0.8%	649	70%	6	86%	70%	10	7	70%	3	0.5%
West Otago	1,637	1	0.1%	869	53%			53%	1	0	0%	3	0.3%
Balfour	90	0	0.0%				No election			No election		No election	
Edendale	398	2	0.5%	290	73%	2	100%	73%	2	2	100%	0	0.0%
Lumsden	287	4	1.4%				No election			No election		No election	
Riversdale	262	0	0.0%				No election			No election		No election	
Riverton	1,263	19	1.5%	799	63%	22	116%	64%	7	7	100%	2	0.2%
Stewart Island	288	35	10.8%	220	76%	52	149%	84%	19	19	100%	0	0.0%
Te Anau	2,027	71	3.4%	1,337	66%	59	83%	67%	3	3	100%	12	0.9%
Tuatapere	1,121	7	0.6%	660	59%	5	71%	59%	0	0	0%	6	0.9%
Wallace	2,402	4	0.2%				No election			No election		No election	
Wallacetown	439	0	0.0%				No election			No election		No election	
Winton	3,545	4	0.1%	2,182	62%	5	125%	62%	1	1	100%	16	0.7%
Wyndham	390	2	0.5%				No election			No election		No election	
Bluff	1,534	3	0.2%	961	63%	2	67%	63%	4	4	100%	9	0.9%
Bush	1,897	3	0.2%				No election			No election		No election	
Otatara	2,169	0	0.0%	1,270	59%	No count		59%	5	5	100%	57	4.5%
94 boards North Island	933,374	4,405	0.5%	307,736	43%	2,803	83%	44%	3,281	2,256	69%	9,116	3.2%
52 boards South Island	349,719	2,130	0.6%	164,652	52%	1,097	82%	52%	1,372	988	72%	13,547	8.3%
146 boards New Zealand	1,283,093	6,535	0.5%	472,388	46%	3,900	82%	46%	4,653	3,244	70%	22,663	5.0%



## **Part Three: Party Affiliation**

99

## Section 14: Local authority parties

This section looks at those that stood for election as part of political party, including local government parties (e.g. Ratepayer party) and central government parties (e.g. Labour). In this section, all mention of “*candidates*” refers to those who were not elected while “*members/councillors*” refers to those who were elected. Standing for election on a “*ticket*” refers to people who stood for election as a member of a party. It should be noted however, there may be some candidates whose party affiliation suggests that they are standing on behalf of an organised party whereas in fact they are standing as individuals and have adopted a ticket name to describe their candidacy. This analysis has not attempted to differentiate between organised party candidates and those who were not.

### Regional Councils

Political parties featured in 7 of the 15 regional council elections in 2001. The eight regional councils where parties were named were: Auckland, Canterbury, Manawatu-Wanganui, Northland, Southland, Waikato, and Wellington. Overall, only a relatively small proportion of candidates were linked with a party compared to the total number of candidates.

Parties were named by 45 candidates and 17 elected councillors. “*Independent*” was given by 34 candidates and 14 councillors. Altogether, 24 parties were named by candidates and 9 were named by elected councillors.

### District Councils

Parties (other than *independent*) were a feature in the election of 18 of the 59 districts in 2001. The 18 district councils that had parties were:

Buller, Far North, Franklin, Gisborne, Horowhenua, Hurunui, Kaipara, Marlborough, Masterton, Opotiki, Papakura, Rotorua, Ruapehu, Taupo,

Tauranga, Thames-Coromandel, Tasman, Wanganui, Western Bay of Plenty, Whangarei, and Westland

A total of 68 candidates and 22 elected councillors in these districts named a party affiliation, while a further 25 candidates and 19 councillors described themselves as an *independent*.

A total of 29 party names were given by candidates, with just 1 party having five or more candidates. A total of 16 parties were used by elected councillors. The only parties with more than one councillor were:

Taupo – Taupo Concerned Citizens, Papakura – Papakura Vision, Far North – The Proven Team, and Western Bay of Plenty - Resource Users Association. Mayoral candidates stood in 8 parties in district mayoral elections, and one elected mayor stood on a party ticket (Tauranga – Strong New Leadership). Six candidates stood as *independents*, and two mayors also stood as *independents*.

### City Councils

Parties (other than *independent*) were a feature in the election of 13 of the 15 city councils in 2001. The city councils that had parties were:

Auckland, Christchurch, Dunedin, Hamilton, Lower Hutt, Manukau, Napier, Nelson, North Shore, Porirua, Upper Hutt, Waitakere, and Wellington.

There were 152 candidates and 95 councillors that stood on a party ticket in the 2001 city council elections. There were a further 109 candidates and 54 councillors that stood as *independents*. A total of 60 party names were given by city council candidates, and 28 party names were given by city councillors. There were just two parties that had more than ten candidates; one party had

more than ten elected members.

The only parties with more than one councillor were:

Auckland - Auckland Citizens & Ratepayers now, City Vision, Labour  
Christchurch - Independent Citizens, Independent for Christchurch 2021, Labour for Christchurch 2021  
Hamilton - Hamilton First, Proudly Independent  
Lower Hutt - City Vision Terris Team  
Manukau - Howick Community Spirit, Labour, Manurewa Residents, Papatoetoe Independents, Residents & Ratepayers  
Porirua – Labour  
Waitakere - Independent Ratepayers & Residents, Team West  
Wellington – Labour, Three 4 North

Parties were a feature of 9 of the 15 mayoral elections. There were 27 candidates that stood for mayor on a party ticket in city council elections in 2001. Five elected mayors also ran on a party ticket. They were:

Christchurch - Christchurch 2021/The Positive, Lower Hutt - City Vision/Terris' Team, Manukau - Residents & Ratepayers, Waitakere - Team West, and Wellington - Kerry4wgtm.

There were 27 mayoral candidates that ran for election as *independents*, and also 3 mayors that were elected.

### Community Boards

Parties were a feature in the election of 44 of the 146 community boards. These boards were located within 13 of the 74 territorial authorities, mostly in and around the larger cities. A total of 149 candidates standing for a community

board ran for election on a party ticket, while 167 members also ran for election on a party ticket. A further 74 candidates and 76 members also stood as *independents*.

A total of 49 party names were given by candidates; only 4 of these parties were named by ten or more candidates. By comparison, a total of 39 party names were given by members but only 6 of these parties were named by ten or more members.

Auckland Citizens and Ratepayers Now (17 candidates / 15 members)  
City Vision (12 candidates / 11 members)  
Go Waitakere (15 candidates / 2 members)  
Independent Citizens (11 candidates / 13 members)  
Labour (0 candidates / 17 members)  
Labour for Christchurch 2021 (7 candidates / 11 members)  
Team West (5 candidates / 17 members)

### District Health Boards

Parties also featured in district health board elections, although not to the same extent as in other elections. There were 68 candidates and 19 members who stood on a party ticket in 2001. A further 164 candidates and 14 members stood as *independents*.

There was a total of different 45 parties amongst candidates, and 13 amongst members. There was one party that had ten or more candidates (Peoples' Health First). The parties that had more than one member were:

Auckland Citizens and ratepayers now, City Vision Terris Team, Hutt 2020, Peoples' Health First.

## 14.1 Details of Parties in Cities

### North Shore

25 candidates and 13 councillors were *independents*. 11 candidates and 2 councillors named parties. Nine parties were mentioned in all. In the mayoral contest, 3 candidates and 1 mayor were *independents*.

### Waitakere

There were 6 *independent* candidates and 3 *independent* councillors. By comparison 24 candidates and 11 councillors ran on a party ticket. 8 parties in all were named.

In the mayoral elections two candidates stood as *independents*, while 1 candidates stood on a party ticket and the mayor was a member of a party. Two parties in all were named. The mayor and 9 councillors and belonged to the Team West party.

### Auckland

A total of 10 candidates stood as *independents* while two councillors also stood as *independents*. There were 31 candidates and 16 councillors standing on a party ticket. Auckland Citizens and Ratepayers Now had 9 councillors. Candidates mentioned 10 parties in total.

There were 4 *independent* candidates, the mayor also stood as an *independent*. 5 candidates stood on a party ticket, and there were 5 parties in total.

### Manukau

There were 12 candidates that stood as *independents*. 19 candidates and 17 councillors ran on a party ticket. Labour and Manurewa Residents parties both had 4 councillors each. There were a total of 16 parties mentioned by candidates.

There 3 parties were mentioned in the mayoral elections. The mayor belonged to one party, and two candidates stood in the others. One candidate was

listed as an *independent*.

### Hamilton

There were 8 *independent* candidates and 6 councillors were also *independents*. 12 candidates stood on a party ticket, as did 6 councillors. Hamilton First and Proudly Independent parties were each represented by 3 councillors. There were 4 parties in the mayoral election and an equal number of candidates. Two candidates also stood as *independents*.

### Napier

One party, with one candidate stood for election in the council elections.

### Palmerston North

There were 5 independent candidates and 1 councillor that stood as *independents*.

There was 1 *independent* candidate in the mayoral election and one candidate that ran on a party ticket.

### Porirua

Porirua had 6 *independent* candidates and an equal number of *independent* councillors. There were two parties in the council elections. Labour had 6 councillors, and the other party stood 1 candidate.

### Lower Hutt

There were 4 *independent* candidates and 4 *independent* councillors. 10 candidates were members of a party, and 7 councillors.

Two parties contested the mayoralty. The mayor and 5 councillors were members of the City Vision Terris Team party.

### Wellington

A total of 27 candidates stood as *independents*, as did 10 councillors. The council elections had 10 candidates that were members of a party and 9 councillors. There were a total of 10 parties that contested the council elections. Three 4 North had 3 councillors. There were 10 candidates that stood as mayoral candidates. Four parties contested the mayoral elections.

### Nelson

One candidate stood on a Green party ticket in Nelson.

### Christchurch

There were 4 *independent* candidates and 3 *independent* councillors in Christchurch elections. A total of 30 candidates were standing on a party ticket, as were 19 councillors. Labour for Christchurch 2021 had 8 councillors. There were 11 parties in all.

There were 4 *independent* candidates in mayoral elections, and 9 candidates that stood on a party ticket. The mayor also ran on a party ticket.

### Dunedin

There was 1 candidate that stood on a party ticket in Dunedin. There were also 4 *independent* councillors. The mayor also stood as an *independent*.

Figure 14.1 and Figure 14.2 show the proportion of candidates and members with party affiliation or *independent* status. The majority of both candidates and members reported neither party affiliation nor independent status. Slightly more candidates and members had *independent* status compared to party affiliation. The status levels for members were identical to the 1998 election results (Figure 14.2).

Figure 14.1: Proportion of candidates with party affiliation or independent status

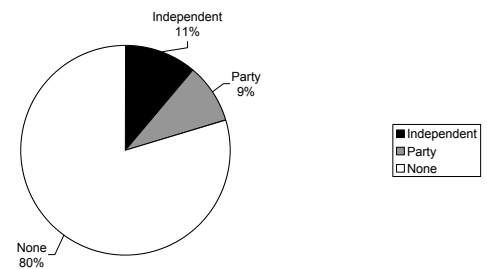
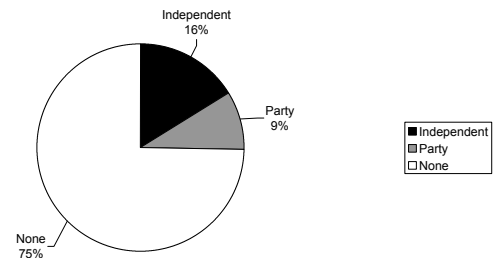


Figure 14.2: Proportion of members with party affiliation or independent status



## 14.2 Full list of Parties named in the 2001 elections

### City Council Mayoral elections

\* = *Party of a mayor*

Alliance

Alliance the Only Choice Left

Bunting in the morning

Christchurch 2021-The Positive \*

Christians against abortion

City Vision - Terris' Team \*

Communist League

Criminal Reform in Motion

Economic Euthenics

For The Public Interest

Green Party

Healthy Water-Public Transport

Hutt 2020 - Labour

Independent Choice

Independent Citizens

Independent One NZ

Kerry4wgtn \*

Libertarian

Mystery Box Party

Proudly Independent

Ratepayers & Citizens

Reform

Residents & Ratepayers \*

Somebody Who Cares

Team West \*

The Garden Party

The Party Party

True Independent

Uprising

[www.chchraterpayers.com](http://www.chchraterpayers.com)

### City Council elections

*Parties with no elected candidates*

Always Ready to Help

Aotearoa Legalise Cannabis Party

A-Team

Better Ways

Citizen & Ratepayer

Citizens & Residents

Community Independent

Completely Independent

Costcutter Party

Criminal Reform in Motion

Go Waitakere

Green for Christchurch 2021

Healthy Water Public Transport

Icare

Independent Green

New Lynn Kelston Community Independent

Northern Merit

Otara Community Action

Pakuranga Community Spirit

Perk Reform

Principally Papatoetoe

Progressive Nudist

Ratepayers and Citizens

Real Community  
Residents & Ratepayers  
Responsibility  
Sewage First  
Te Tangata Whenua  
Technopol  
The Local Choice  
The Motorists Voice  
Totally Independent  
True Independent  
Truly Independent  
Waiheke's Independent Team  
Wellington Today  
Workers Party of NZ  
Workers Voice

**City Council elections**

*Parties with elected candidates*

Alliance  
Alliance for Christchurch 2021  
Auckland Citizens & Ratepayers Now  
City Vision  
City Vision Terris Team  
For the Public Interest  
Green party  
Hamilton First  
Healthy Water - Public Transport  
Howick Community Spirit  
Hutt 2020  
Hutt 2020 Labour

Independent Birkenhead/Glenfield/Northcote  
Independent Citizens  
Independent for Christchurch 2021  
Independent Ratepayers  
Independent Ratepayers & Residents  
Labour  
Labour for Christchurch 2021  
Manurewa Residents  
Pakuranga 2000 - Your Town Your Future  
Pakuranga Ratepayers & Residents Team  
Papatoetoe Independents  
Proudly Independent  
Proven Commitment  
Team Auckland  
Team West  
Three 4 North

**District Council Mayoral elections**

\* = *Party of a mayor*

Youth Independent Political Party  
Te Whanau-a-Apanu-Ngati Makino  
Papakura Vision  
An Independent Option  
Strong New Leadership \*  
Time For Change  
Independent  
Democracy Network Association  
Libertarianz  
People First - Green

**District Council elections***Parties with no elected candidates*

Alliance  
 Clean Team  
 Concerned Citizens Group  
 City Vision Team  
 ECO-nation (Horowhenua)  
 Equal Rights Party  
 Go Wanganui  
 Green party  
 Independent Green  
 Mt Maunganui Progressive Assn Inc  
 Network Association  
 Ngatimuriwai  
 Oho Ake  
 People First  
 People First - Green  
 Te Ehutu  
 The Hurley Plan  
 The Team  
 Time for a change  
 Youth Independent Political Party

**District Council elections***Parties with elected candidates*

Community First  
 Coromandel Care  
 Democracy Network Association  
 Independent Representing People  
 MNZM

Mataatua Whanui  
 Papakura Vision  
 Rates Reform  
 Residents and Ratepayers Association  
 Ratepayers Action  
 Resource Users Association  
 Secure Our Town Centre  
 The Proven Team  
 Taupo Concerned Citizens  
 Te Whanau-a-Apanui - Ngati Makino  
 Your Team

**Regional Council elections***Parties with no elected candidates*

A New Team  
 Alliance Fix Auckland  
 Alliance  
 Community Spirit  
 Go Waitakere  
 Green Party of Aotearoa NZ  
 Green for Christchurch 2021  
 Independent Green  
 Labour  
 More Parks  
 Mangamaunu Hapu  
 People First - Green  
 Regional Ratepayers  
 Roads First  
 Save the Southerner  
 Sustainable Wellington

Taupo Concerned Citizens  
Your Views Matter

**Regional Council elections**

*Parties with elected candidates*

City Vision-Terris' Team  
Hamilton First  
Hutt 2020  
Independent Citizens  
Advancing Auckland  
Team West  
Auckland Citizens and Ratepayers Now  
Independent for Christchurch 2021  
Labour for Christchurch 2021

**District Health Board elections**

*Parties with no elected candidates*

Advancing Auckland  
Alliance  
Alliance for Christchurch 2021  
Aotearoa Legalise Cannabis  
Assn of Social Services  
Community Independent  
Community Spirit  
Community Vision  
Disability Advocate  
Equal Rights Party  
Electronic Schizophrenia (Sydenham Wigram Group)  
Go Wanganui  
Green for Christchurch 2021

Green party  
Hauora Matakauka  
Independent Citizens  
MNZM  
Mangamaunu Hapu  
Maori  
Methodist/Presbyterian/Quaker Social Issues Committee (Canterbury)  
Ngati Turumakina & Te Nohanga Kotahitanga o Tuwharetoa  
Operation Success  
Papakura Vision  
People First  
Porirua Community  
Public Health  
Real Community  
Registered Psychologist  
Residents & Ratepayers  
Save Greenlane Hospital  
Schizophrenia Fellowship Canterbury Branch Inc.  
Sewage First  
Smoke-Free Ecology  
Te Tangata Whenua  
The Hapu of Ngati Kuri  
Totally Independent  
Waitakere Independent Network  
Your Views Matter

**District Health Board elections**

*Parties with elected candidates*

Age Concern Marlborough  
City Vision Terris Team

Health Board Action  
Independent for Christchurch 2021  
Labour  
Labour for Christchurch 2021  
Manurewa Residents  
Taupo Concerned Citizens  
Team West  
True Independent  
Peoples Health First  
Hutt 2020  
Auckland Citizens and Ratepayers Now

**Community Board elections**

*Parties with no elected candidates*

A-Team  
Alliance  
Citizen & Ratepayer  
Clan McGillicuddy  
Community Independent  
Equal Rights  
East Coast Bays Independent  
Electorate First  
Fluoride-Free  
Green Independent  
Green for Christchurch 2021  
Green party  
Healthy Water Public Transport  
Independent Family Man  
Independent Progressive  
New Lynn Kelston Community Independent

Pahia Districts Residents and Ratepayers  
Pakuranga Community Spirit  
Real Community  
Residents & Ratepayers  
Te Tangata Whenua  
The Local Choice  
Totally Independent  
Waiheke's Auckland Citizens and Ratepayers Now Independent  
Waterview Environment

**Community Board elections**

*Parties with elected candidates*

Combined residents  
Always Ready to Help  
Clean Team  
GE Free  
Independent Glenfield  
Independent Ratepayers  
Katikati Ward Muralltown Ratepayers' Association  
Massey Ward Action  
Omokoroa Ratepayers Association  
Pakuranga 2000-Your Town Your Future  
Team Auckland  
True Independent  
United Independent  
Community Independent  
City Vision Terris' Team  
Community First  
Go Waitakere  
Independent Ratepayers & Residents

Manurewa Independent  
Principally Papatoetoe  
Waiheke's Independent Team  
Community Focus  
Democracy Network Association  
Paekakariki Tickit  
Alliance for Christchurch 2021  
Independent for Christchurch 2021  
Papatoetoe Independents  
Ratepayers Team  
Howick Community Spirit  
Hutt 2020  
Maungakiekie Team  
Pakuranga Ratepayers & Residents Team  
Manurewa Residents  
Labour for Christchurch 2021  
Independent Citizens  
Auckland Citizens and Ratepayers Now  
Labour  
Team West