

# DIGITALCHILDEXPLOITATION FILTERINGSYSTEM

10111101101  
10100101111  
01101111001  
10000011011  
11001011110  
01010110110  
11110110110  
10010111101  
10111100110  
00001101111  
00101111001  
01011011011  
01011010111  
11011011010  
11010110110  
10110010000  
10110100101  
01110101011  
01101001101  
01001001001  
11001010001  
11010000110  
10010110100  
10110111101  
10110100101  
11101101111  
00110000011  
01111001011  
11001010110  
11011110110  
11010010111  
10110111100  
11000001101  
11100101111  
00101011011  
01101011010  
11111011011  
01011010110  
11010110010  
00010110100  
10101110101  
01101101001  
10101001001  
00111001010  
00111010000  
11010010110  
10010110111  
10110110100  
10111101101  
11100110000  
01101111001

## IRG Briefing Document December 2011

# DIGITALCHILDEXPLOITATION FILTERINGSYSTEM

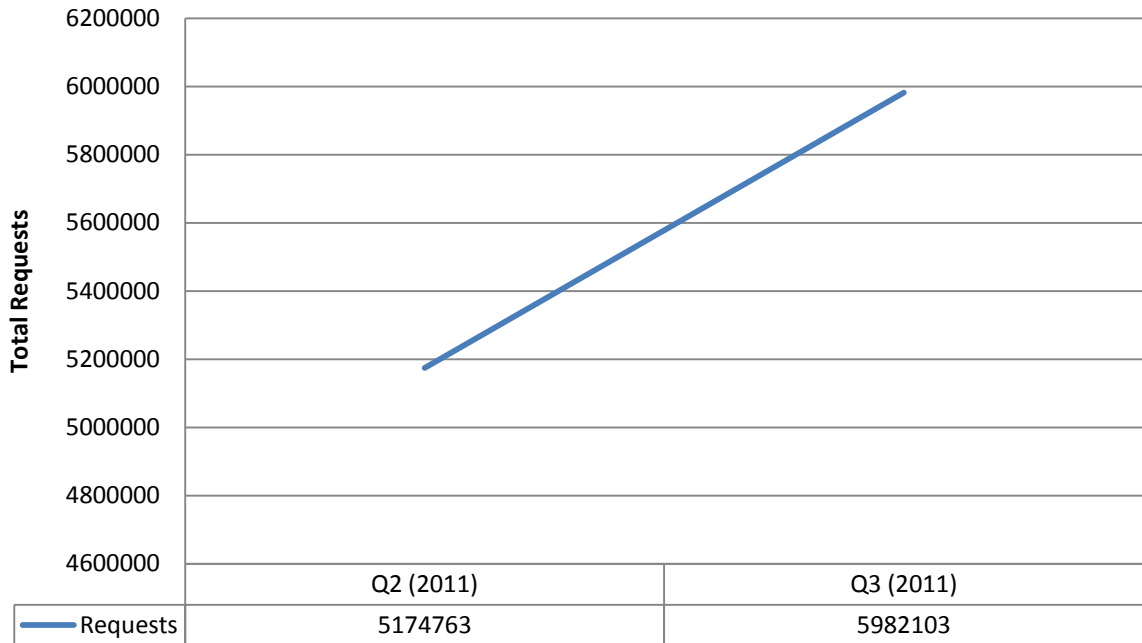
10111101101  
10100101111  
01101111001  
10000011011  
11001011110  
01010110110  
11110110110  
10010111101  
10111100110  
00001101111  
00101111001  
01011011011  
01011010111  
11011011010  
11010110110  
10110010000  
10110100101  
01110101011  
01101001101  
01001001001  
11001010001  
11010000110  
10010110100  
10110111101  
10110100101  
11101101111  
00110000011  
01111001011  
11001010110  
11011110110  
11010010111  
10110111100  
11000001101  
11100101111  
00101011011  
01101011010  
11111011011  
01011010110  
11010110010  
00010110100  
10101110101  
01101101001  
10101001001  
00111001010  
00111010000  
11010010110  
10010110111  
10110110100  
10111101101  
11100110000  
01101111001

## Contents

Network Flow:.....	1
Quarterly Report:.....	1
System Maintenance: .....	1
System Health: .....	2
System Updates: .....	3
Planned Information Updates.....	3
Filter Statistics to Date:.....	4

# DIGITALCHILDEXPLOITATION FILTERING SYSTEM

## Network Flow:



## Quarterly Report:

At the time of writing this report the access attempts reported by the system is over 16 Million. The increase in traffic can be explained by the addition of 2 new service providers.

We have received 25 appeals from users who were attempting to access a blocked site in this quarter; in all instances the received appeals were processed by the review team and found to contain child abuse material thus the site remained on the list.

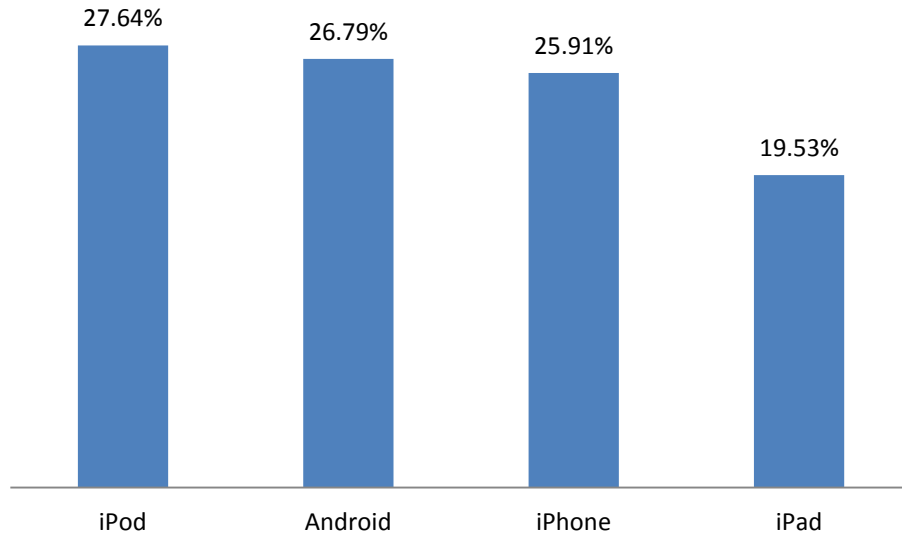
Some of the text contained in the appeals is below.

- I just want to see it
- I fantasy about my aunt
- I don't have children
- Its only hentai there is no auctal harm in it
- Curious
- Not Real
- Just to see if its as bad as you say it is ok
- Reaserch
- I like cute boys
- Just looking
- None of your business

During this quarter, 74% of the traffic originated from a referring site with only 10% of the users accessing the material directly, this could be due to the high number of gateway sites now available. Additionally 18% of the users originated from search engines such as google images.

# DIGITALCHILDEXPLOITATION FILTERING SYSTEM

During this quarter Personal Electronic Device traffic accounted for 6.07% of all traffic the breakdown for individual device access is below



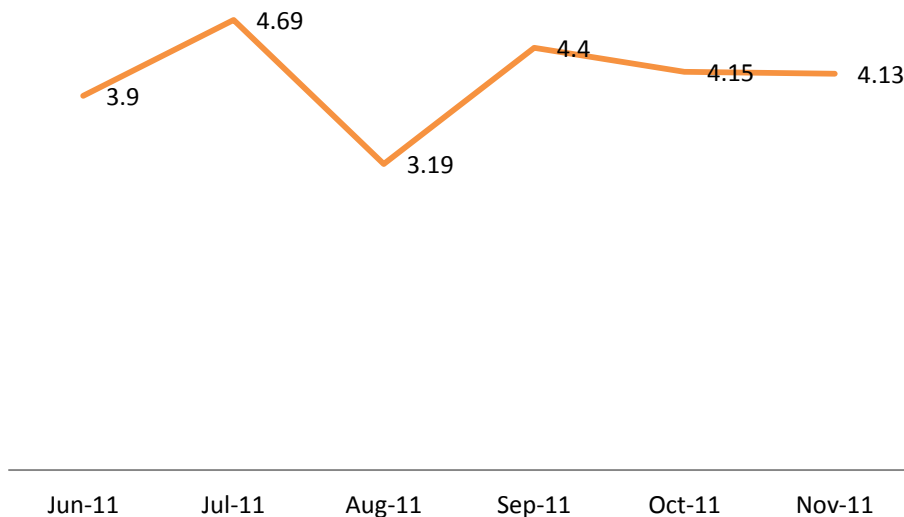
## System Maintenance:

There are some scheduled works to be completed in the new year relating to standard firmware updates for the systems installed at the datacentre, this activity will be coordinated with the service providers affected to ensure transparency.

## System Health:

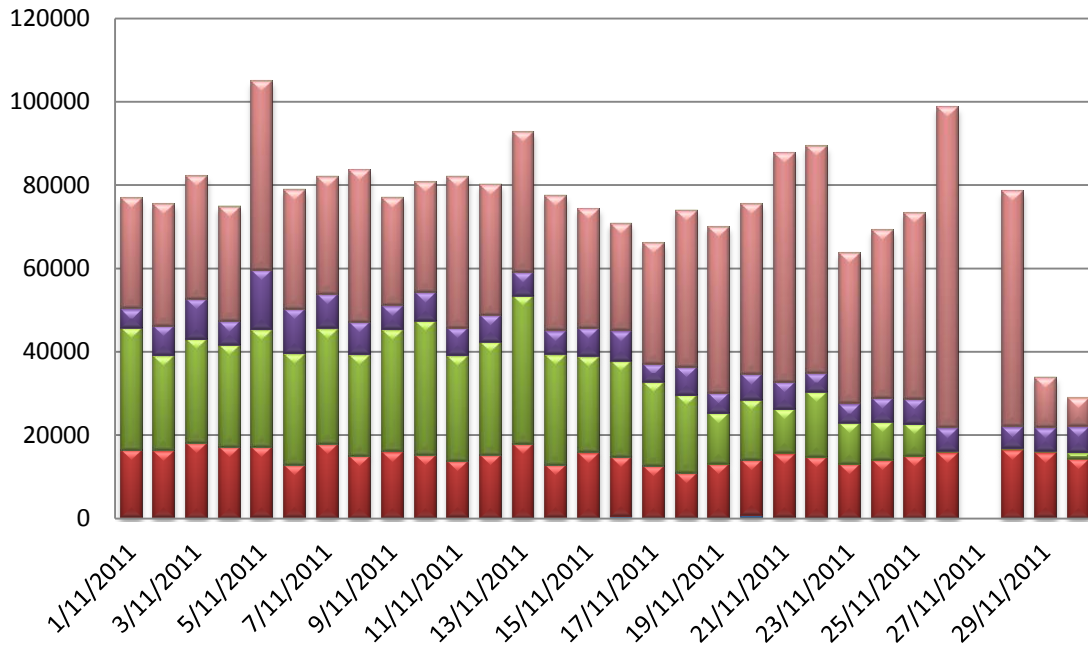
The system currently has 2.2 million ISP clients, based on numbers supplied to the unit from the providers connected.

At present we are using approximately 1% of the resources being the filter system itself and processing 500MB-1GB of traffic per day. We have begun recording the total amount of filtered traffic per month and as such can now report the following data trends for Q2 and Q3

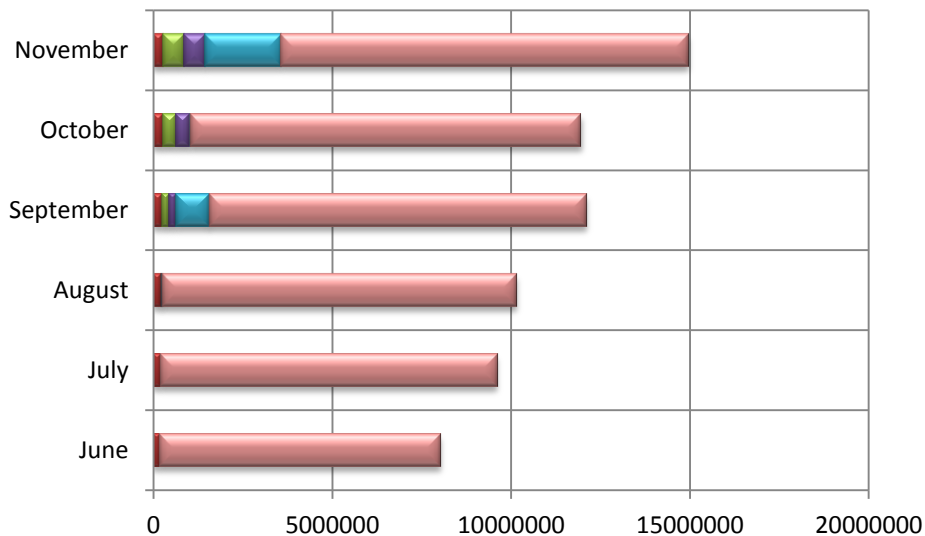


# DIGITALCHILDEXPLOITATION FILTERINGSYSTEM

The graph below illustrates the number of blocks recorded by each ISP for the month of November.



The information below depicts the amount of blocks in the last two quarters. The significant increase is due to the addition of some new service providers during this period.



## System Updates:

The list has been completely reviewed and sites that are no longer accessible or applicable (due to the removal of Child Exploitation Material) have been removed.

## Planned Information Updates

No updates have been planned at this time.

# DIGITALCHILDEXPLOITATION FILTERING SYSTEM

## Filter Statistics to Date:

Number of Providers:	7
Number of ISP clients filtered <sup>1</sup>	2.2 Million
Requests Blocked:	16.1 Million (Increase of 7 million)
Filter List Size:	415 (decrease of 267)
Entries Added Since last Quarter:	61
Entries Removed:	267
Unique Sites:	368
Sites containing drawings only (CGI or Hentai)	82
Traffic:	500MB – 1GB per day
Appeals:	25

---

<sup>1</sup> Number is based on data provided to the unit by the participating service providers